

Product datasheet

Anti-PU.1/Spi1 antibody [SP238] ab183327

Recombinant RabMAb

4 Images

Overview

Product name	Anti-PU.1/Spi1 antibody [SP238]
Description	Rabbit monoclonal [SP238] to PU.1/Spi1
Host species	Rabbit
Tested applications	Suitable for: Flow Cyt, ICC/IF, IHC-P
Species reactivity	Reacts with: Human Predicted to work with: Mouse, Rat, Pig ▲
Immunogen	Synthetic peptide within Human PU.1/Spi1 aa 100-200 (internal sequence). The exact sequence is proprietary. Database link: P17947
Positive control	IHC-P: Human tonsil lysate. Flow Cyt: THP-1 cells. ICC/IF: Raji cells.
General notes	This product is FOR RESEARCH USE ONLY. For commercial use, please contact partnerships@abcam.com.

This product is a recombinant monoclonal antibody, which offers several advantages including:

- High batch-to-batch consistency and reproducibility
- Improved sensitivity and specificity
- Long-term security of supply
- Animal-free production

For more information [see here](#).

Reproducibility is key to advancing scientific discovery and accelerating scientists' next breakthrough.

Abcam is leading the way with our range of recombinant antibodies, knockout-validated antibodies and knockout cell lines, all of which support improved reproducibility.

We are also planning to innovate the way in which we present recommended applications and species on our product datasheets, so that only applications & species that have been tested in our own labs, our suppliers or by selected trusted collaborators are covered by our Abpromise™ guarantee.

In preparation for this, we have started to update the applications & species that this product is Abpromise guaranteed for.

We are also updating the applications & species that this product has been “predicted to work with,” however this information is not covered by our Abpromise guarantee.

Applications & species from publications and Abreviews that have not been tested in our own labs or in those of our suppliers are not covered by the Abpromise guarantee.

Please check that this product meets your needs before purchasing. If you have any questions, special requirements or concerns, please send us an inquiry and/or contact our Support team ahead of purchase. Recommended alternatives for this product can be found below, as well as customer reviews and Q&As.

Properties

Form	Liquid
Storage instructions	Shipped at 4°C. Store at +4°C short term (1-2 weeks). Upon delivery aliquot. Store at -20°C long term. Avoid freeze / thaw cycle.
Storage buffer	pH: 7.60 Preservative: 0.1% Sodium azide Constituents: PBS, 1% BSA
Purity	Protein A/G purified
Purification notes	Purified from TCS by protein A/G.
Clonality	Monoclonal
Clone number	SP238
Isotype	IgG

Applications

Our [Abpromise guarantee](#) covers the use of **ab183327** in the following tested applications.

The application notes include recommended starting dilutions; optimal dilutions/concentrations should be determined by the end user.

Application	Abreviews	Notes
Flow Cyt		1/2000.
ICC/IF		1/1000.
IHC-P		1/100. Perform heat mediated antigen retrieval with citrate buffer pH 6 before commencing with IHC staining protocol.

Target

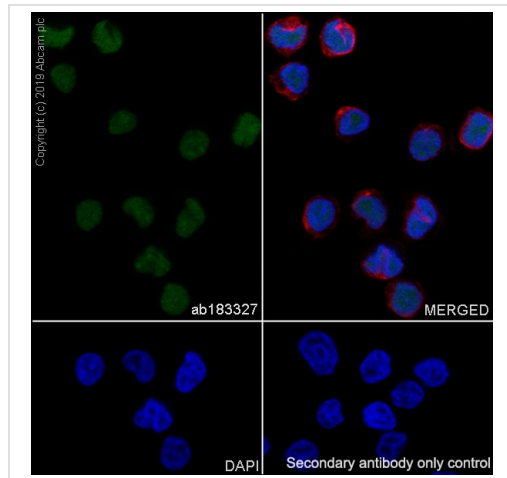
Function	Binds to the PU-box, a purine-rich DNA sequence (5'-GAGGAA-3') that can act as a lymphoid-specific enhancer. This protein is a transcriptional activator that may be specifically involved in the differentiation or activation of macrophages or B-cells. Also binds RNA and may modulate pre-mRNA splicing.
Sequence similarities	Belongs to the ETS family.

Contains 1 ETS DNA-binding domain.

Cellular localization

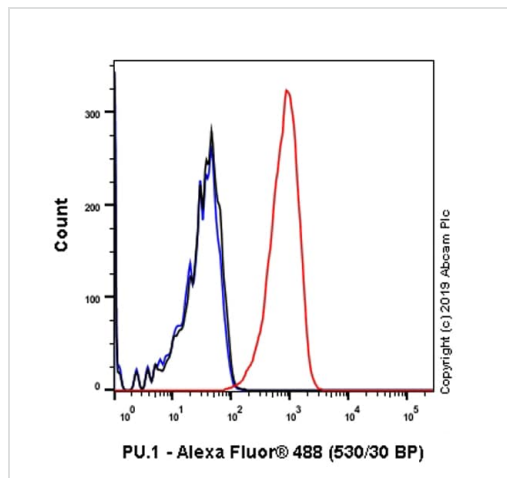
Nucleus.

Images



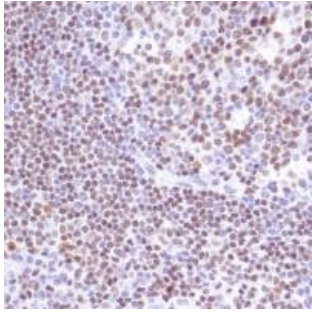
Immunocytochemistry/ Immunofluorescence - Anti-PU.1/Spi1 antibody [SP238] (ab183327)

Immunocytochemistry/ Immunofluorescence analysis of Raji (human Burkitt's lymphoma B lymphocyte) cells labeling CD23 with purified [ab135386](#) at 1/25 (7.48 µg/ml). Cells were fixed in 4% paraformaldehyde and permeabilized with 0.1% Triton X-100. Cells were counterstained with Ab195889 Anti-alpha Tubulin antibody [DM1A] - Microtubule Marker (Alexa Fluor® 594) 1:200 (2.5 µg/ml). Goat anti rabbit IgG (Alexa Fluor® 488, [ab150077](#)) was used as the secondary antibody at 1:1000 (2 µg/ml) dilution. DAPI (blue) was used as nuclear counterstain. PBS instead of the primary antibody was used as the secondary antibody only control.



Flow Cytometry - Anti-PU.1/Spi1 antibody [SP238] (ab183327)

Flow Cytometry analysis of THP-1 (human monocytic leukemia monocyte) cells labeling PU.1/Spi1 with purified [ab183327](#) at 1:200 dilution (0.715 µg/ml) (Red). Cells were fixed with 4% paraformaldehyde and permeabilised with 90% methanol. A Goat anti rabbit IgG (Alexa Fluor® 488, [ab150081](#)) secondary antibody was used at 1:2000 dilution. Isotype control - Rabbit monoclonal IgG ([ab172730](#)) / Black. Unlabeled control - Unlabelled cells / blue.



Immunohistochemical analysis of paraffin embedded Human tonsil tissue labeling PU.1/Spi1 with ab183327 at 1/100.

Immunohistochemistry (Formalin/PFA-fixed paraffin-embedded sections) - Anti-PU.1/Spi1 antibody [SP238] (ab183327)

Why choose a recombinant antibody?



Anti-PU.1/Spi1 antibody [SP238] (ab183327)

Please note: All products are "FOR RESEARCH USE ONLY. NOT FOR USE IN DIAGNOSTIC PROCEDURES"

Our Abpromise to you: Quality guaranteed and expert technical support

- Replacement or refund for products not performing as stated on the datasheet
- Valid for 12 months from date of delivery
- Response to your inquiry within 24 hours
- We provide support in Chinese, English, French, German, Japanese and Spanish
- Extensive multi-media technical resources to help you
- We investigate all quality concerns to ensure our products perform to the highest standards

If the product does not perform as described on this datasheet, we will offer a refund or replacement. For full details of the Abpromise, please visit <https://www.abcam.com/abpromise> or contact our technical team.

Terms and conditions

- Guarantee only valid for products bought direct from Abcam or one of our authorized distributors