

Product datasheet

Anti-Putative 40S ribosomal protein-like antibody ab235112

[2 Images](#)

Overview

Product name	Anti-Putative 40S ribosomal protein-like antibody
Description	Rabbit polyclonal to Putative 40S ribosomal protein-like
Host species	Rabbit

Tested Applications & Species

Application	Species
IP	Human
WB	Human

[See all applications and species data](#) ↓

Immunogen Recombinant full length protein corresponding to Human Putative 40S ribosomal protein-like aa 1-200.
Database link: [Q9NQ39](#)

[Run BLAST with](#)

[Run BLAST with](#)

Positive control WB: HEK-293 whole cell lysate. IP: HEK-293 whole cell lysate.

General notes

The Life Science industry has been in the grips of a reproducibility crisis for a number of years. Abcam is leading the way in addressing the problem with our range of recombinant monoclonal antibodies and knockout edited cell lines for gold-standard validation.

One factor contributing to the crisis is the use of antibodies that are not suitable. This can lead to misleading results and the use of incorrect data informing project assumptions and direction. To help address this challenge, we have introduced an application and species grid on our primary antibody datasheets to make it easy to simplify identification of the right antibody for your needs.

Learn more [here](#).

Properties

Form	Liquid
Storage instructions	Shipped at 4°C. Store at +4°C short term (1-2 weeks). Upon delivery aliquot. Store at -20°C long

term. Avoid freeze / thaw cycle.

Storage buffer

pH: 7.40

Constituents: PBS, 50% Glycerol (glycerin, glycerine), 0.03% Proclin 300

Purity

Protein G purified

Purification notes

Purity >95%

Clonality

Polyclonal

Isotype

IgG



Applications

The Abpromise guarantee

Our [Abpromise guarantee](#) covers the use of **ab235112** in the following tested applications.

The application notes include recommended starting dilutions; optimal dilutions/concentrations should be determined by the end user.

 Guaranteed Tested applications are guaranteed to work and covered by our Abpromise guarantee.	 Predicted Predicted to work for this combination of applications and species but not guaranteed.	 Incompatible Does not work for this combination of applications and species.
--	--	--

Application	Species
IP	 Human
WB	 Human

Application	Abreviews	Notes
WB		1/500 - 1/5000. Predicted molecular weight: 20 kDa.
IP		1/200 - 1/2000.

Target

Images



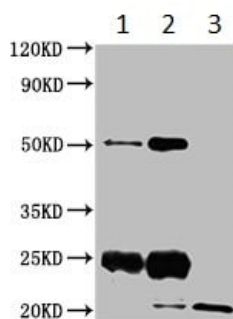
Western blot - Anti-Putative 40S ribosomal protein-like antibody (ab235112)

Anti-Putative 40S ribosomal protein-like antibody (ab235112) at 1/500 dilution + HEK-293 (human epithelial cell line from embryonic kidney) whole cell lysate

Secondary

Goat polyclonal to rabbit IgG at 1/50000 dilution

Predicted band size: 20 kDa



Immunoprecipitation - Anti-Putative 40S ribosomal protein-like antibody (ab235112)

Putative 40S ribosomal protein-like was immunoprecipitated from 500 µg HEK-293 (human epithelial cell line from embryonic kidney) whole cell lysate with ab235112 at 1/200 dilution.

Lane 1: Control IgG IP in HEK-293 whole cell lysate.

Lane 2: ab235112 IP in HEK-293 whole cell lysate

Lane 3: HEK-293 whole cell lysate 10 µg (Input)

For Western blotting, a HRP-conjugated Protein G antibody was used as the secondary antibody at 1/2000 dilution.

Please note: All products are "FOR RESEARCH USE ONLY. NOT FOR USE IN DIAGNOSTIC PROCEDURES"

Our Abpromise to you: Quality guaranteed and expert technical support

- Replacement or refund for products not performing as stated on the datasheet
- Valid for 12 months from date of delivery
- Response to your inquiry within 24 hours
- We provide support in Chinese, English, French, German, Japanese and Spanish
- Extensive multi-media technical resources to help you
- We investigate all quality concerns to ensure our products perform to the highest standards

If the product does not perform as described on this datasheet, we will offer a refund or replacement. For full details of the Abpromise, please visit <https://www.abcam.com/abpromise> or contact our technical team.

Terms and conditions

- Guarantee only valid for products bought direct from Abcam or one of our authorized distributors