

Product datasheet

Anti-PVRL1/NECTIN1 antibody [R1.302] ab234128

1 Image

Overview

---

<b>Product name</b>	Anti-PVRL1/NECTIN1 antibody [R1.302]
<b>Description</b>	Mouse monoclonal [R1.302] to PVRL1/NECTIN1
<b>Host species</b>	Mouse
<b>Tested applications</b>	<b>Suitable for:</b> Flow Cyt
<b>Species reactivity</b>	<b>Reacts with:</b> Human
<b>Immunogen</b>	Tissue, cells or virus corresponding to Human PVRL1/NECTIN1. (NIH/3T3 cells transfected with human PVRL1/NECTIN1).
<b>Positive control</b>	Flow Cytometry: Human peripheral blood.
<b>General notes</b>	This product was previously labelled as PVRL1

Reproducibility is key to advancing scientific discovery and accelerating scientists' next breakthrough.

Abcam is leading the way with our range of recombinant antibodies, knockout-validated antibodies and knockout cell lines, all of which support improved reproducibility.

We are also planning to innovate the way in which we present recommended applications and species on our product datasheets, so that only applications & species that have been tested in our own labs, our suppliers or by selected trusted collaborators are covered by our Abpromise™ guarantee.

In preparation for this, we have started to update the applications & species that this product is Abpromise guaranteed for.

We are also updating the applications & species that this product has been “predicted to work with,” however this information is not covered by our Abpromise guarantee.

Applications & species from publications and Abreviews that have not been tested in our own labs or in those of our suppliers are not covered by the Abpromise guarantee.

Please check that this product meets your needs before purchasing. If you have any questions, special requirements or concerns, please send us an inquiry and/or contact our Support team ahead of purchase. Recommended alternatives for this product can be found below, as well as customer reviews and Q&As.

Properties

---

<b>Form</b>	Liquid
<b>Storage instructions</b>	Shipped at 4°C. Store at +4°C short term (1-2 weeks). Upon delivery aliquot. Store at -20°C long term. Avoid freeze / thaw cycle.
<b>Storage buffer</b>	pH: 7.40 Preservative: 0.0975% Sodium azide Constituent: PBS
<b>Purity</b>	Protein A purified
<b>Purification notes</b>	Purity > 95% (by SDS-PAGE).
<b>Clonality</b>	Monoclonal
<b>Clone number</b>	R1.302
<b>Isotype</b>	IgG1

## Applications

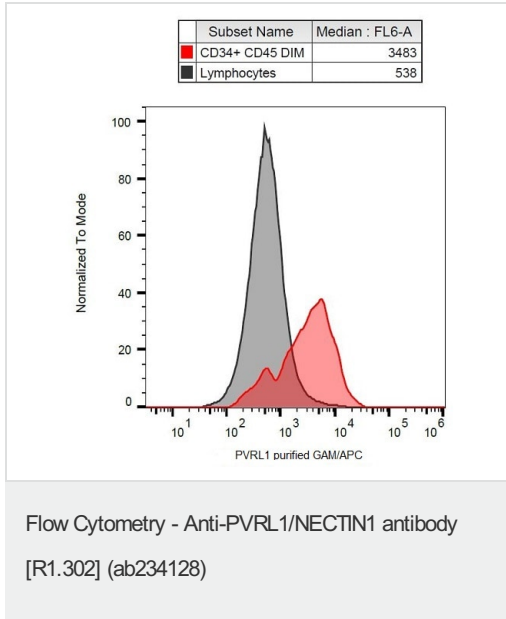
Our [Abpromise guarantee](#) covers the use of **ab234128** in the following tested applications.

The application notes include recommended starting dilutions; optimal dilutions/concentrations should be determined by the end user.

Application	Abreviews	Notes
Flow Cyt		Use at an assay dependent concentration.

## Target

<b>Function</b>	Promotes cell-cell contacts by forming homophilic or heterophilic trans-dimers. Heterophilic interactions have been detected between PVRL1/nectin-1 and PVRL3/nectin-3 and between PVRL1/nectin-1 and PVRL4/nectin-4.
<b>Involvement in disease</b>	Defects in PVRL1 are the cause of ectodermal dysplasia Margarita Island type (EDMI) [MIM:225060]; also known as Zlotogora-Ogur syndrome, cleft lip/palate-ectodermal dysplasia syndrome (CLPED1) or ectodermal dysplasia 4. Ectodermal dysplasia defines a heterogeneous group of disorders due to abnormal development of two or more ectodermal structures. EDMI is an autosomal recessive syndrome characterized by the association of cleft lip/palate, ectodermal dysplasia (sparse short and dry scalp hair, sparse eyebrows and eyelashes), and partial syndactyly of the fingers and/or toes. Two thirds of the patients do not manifest oral cleft but present with abnormal teeth and nails. Defects in PVRL1 are the cause of non-syndromic orofacial cleft type 7 (OFC7) [MIM:225060]. Non-syndromic orofacial cleft is a common birth defect consisting of cleft lips with or without cleft palate. Cleft lips are associated with cleft palate in two-third of cases. A cleft lip can occur on one or both sides and range in severity from a simple notch in the upper lip to a complete opening in the lip extending into the floor of the nostril and involving the upper gum.
<b>Sequence similarities</b>	Belongs to the nectin family. Contains 2 Ig-like C2-type (immunoglobulin-like) domains. Contains 1 Ig-like V-type (immunoglobulin-like) domain.
<b>Cellular localization</b>	Secreted and Cell membrane.



Flow cytometric analysis of human peripheral blood labeling PVRL1/NECTIN1 with ab234128, followed by Goat-anti Mouse APC.

**Please note:** All products are "FOR RESEARCH USE ONLY. NOT FOR USE IN DIAGNOSTIC PROCEDURES"

**Our Abpromise to you: Quality guaranteed and expert technical support**

- Replacement or refund for products not performing as stated on the datasheet
- Valid for 12 months from date of delivery
- Response to your inquiry within 24 hours
- We provide support in Chinese, English, French, German, Japanese and Spanish
- Extensive multi-media technical resources to help you
- We investigate all quality concerns to ensure our products perform to the highest standards

If the product does not perform as described on this datasheet, we will offer a refund or replacement. For full details of the Abpromise, please visit <https://www.abcam.com/abpromise> or contact our technical team.

**Terms and conditions**

- Guarantee only valid for products bought direct from Abcam or one of our authorized distributors