

## Product datasheet

# Anti-PWP1 antibody [EPR16131] - C-terminal ab190795

Recombinant **RabMAb**

[3 Images](#)

### Overview

<b>Product name</b>	Anti-PWP1 antibody [EPR16131] - C-terminal
<b>Description</b>	Rabbit monoclonal [EPR16131] to PWP1 - C-terminal
<b>Host species</b>	Rabbit
<b>Tested applications</b>	<b>Suitable for:</b> WB, Flow Cyt
<b>Species reactivity</b>	<b>Reacts with:</b> Mouse, Rat, Human
<b>Immunogen</b>	Synthetic peptide within Human PWP1 aa 450 to the C-terminus. The exact sequence is proprietary. Database link: <a href="#">Q13610</a>
<b>Positive control</b>	293, Jurkat, HepG2, HeLa, NIH-3T3 cell lysates; Jurkat cells
<b>General notes</b>	

This product is a recombinant monoclonal antibody, which offers several advantages including:

- High batch-to-batch consistency and reproducibility
- Improved sensitivity and specificity
- Long-term security of supply
- Animal-free production

For more information [see here](#).

Our RabMAb<sup>®</sup> technology is a patented hybridoma-based technology for making rabbit monoclonal antibodies. For details on our patents, please refer to [RabMAb<sup>®</sup> patents](#).

### Properties

<b>Form</b>	Liquid
<b>Storage instructions</b>	Shipped at 4°C. Store at +4°C short term (1-2 weeks). Upon delivery aliquot. Store at -20°C long term. Avoid freeze / thaw cycle.
<b>Storage buffer</b>	pH: 7.2 Preservative: 0.01% Sodium azide Constituents: 59% PBS, 40% Glycerol (glycerin, glycerine), 0.05% BSA
<b>Purity</b>	Protein A purified

<b>Clonality</b>	Monoclonal
<b>Clone number</b>	EPR16131
<b>Isotype</b>	IgG

## Applications

Our [Abpromise guarantee](#) covers the use of **ab190795** in the following tested applications.

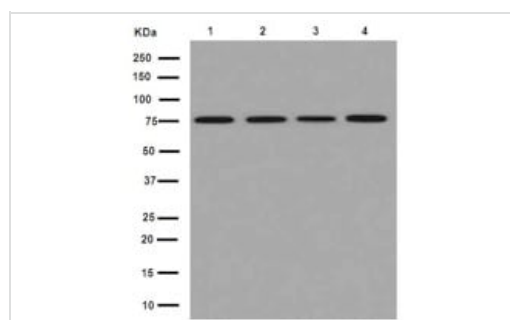
The application notes include recommended starting dilutions; optimal dilutions/concentrations should be determined by the end user.

Application	Abreviews	Notes
WB		1/1000 - 1/10000. Detects a band of approximately 79 kDa (predicted molecular weight: 56 kDa).
Flow Cyt		1/180. <a href="#">ab172730</a> - Rabbit monoclonal IgG, is suitable for use as an isotype control with this antibody.

## Target

<b>Function</b>	May play an important role in cell growth and/or transcription.
<b>Tissue specificity</b>	High levels seen in the placenta, skeletal muscle, kidney and pancreas while lower levels were seen in the heart, brain and lung.
<b>Sequence similarities</b>	Belongs to the WD repeat PWP1 family. Contains 5 WD repeats.
<b>Cellular localization</b>	Nucleus.

## Images



Western blot - Anti-PWP1 antibody [EPR16131] - C-terminal (ab190795)

**All lanes** : Anti-PWP1 antibody [EPR16131] - C-terminal (ab190795) at 1/10000 dilution

**Lane 1** : 293 cell lysate

**Lane 2** : Jurkat cell lysate

**Lane 3** : HepG2 cell lysate

**Lane 4** : Hela cell lysate

Lysates/proteins at 10 µg per lane.

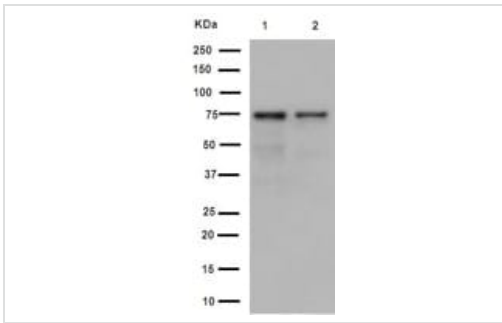
### Secondary

**All lanes** : Goat Anti-Rabbit IgG, (H+L), Peroxidase conjugated at 1/1000 dilution

**Predicted band size:** 56 kDa

**Observed band size:** 79 kDa

[why is the actual band size different from the predicted?](#)



Western blot - Anti-PWP1 antibody [EPR16131] - C-terminal (ab190795)

**All lanes :** Anti-PWP1 antibody [EPR16131] - C-terminal (ab190795) at 1/1000 dilution

**Lane 1 :** C6 cell lysate

**Lane 2 :** NIH-3T3 cell lysate

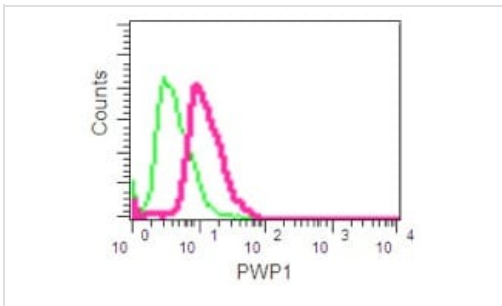
Lysates/proteins at 10 µg per lane.

### Secondary

**All lanes :** Goat Anti-Rabbit IgG, (H+L), Peroxidase conjugated at 1/1000 dilution

**Predicted band size:** 56 kDa

**Observed band size:** 79 kDa [why is the actual band size different from the predicted?](#)



Flow Cytometry - Anti-PWP1 antibody [EPR16131] - C-terminal (ab190795)

Flow cytometry analysis of PWP1 expression in Jurkat cells using ab190795 at 1/180 dilution (red) and a rabbit IgG as negative control (green). A FITC-conjugated goat anti-rabbit IgG (1/150) was used as the secondary antibody.

**Please note:** All products are "FOR RESEARCH USE ONLY. NOT FOR USE IN DIAGNOSTIC PROCEDURES"

### Our Abpromise to you: Quality guaranteed and expert technical support

- Replacement or refund for products not performing as stated on the datasheet
- Valid for 12 months from date of delivery
- Response to your inquiry within 24 hours
- We provide support in Chinese, English, French, German, Japanese and Spanish
- Extensive multi-media technical resources to help you
- We investigate all quality concerns to ensure our products perform to the highest standards

If the product does not perform as described on this datasheet, we will offer a refund or replacement. For full details of the Abpromise,

please visit <https://www.abcam.com/abpromise> or contact our technical team.

## **Terms and conditions**

---

- Guarantee only valid for products bought direct from Abcam or one of our authorized distributors