




Product datasheet

Anti-PYCR2 antibody ab185578

2 Images

Overview

Product name	Anti-PYCR2 antibody
Description	Rabbit polyclonal to PYCR2
Host species	Rabbit
Tested applications	Suitable for: WB, IHC-P
Species reactivity	Reacts with: Human Predicted to work with: Cynomolgus monkey, Orangutan 
Immunogen	Recombinant fragment corresponding to Human PYCR2 aa 282-319. Sequence: LKKTLDRVKLESPTVSTLTPSSPGKLLTRSLALGGKK Database link: Q96C36  Run BLAST with  Run BLAST with
Positive control	Human rectum tissue; RT4 and U251MG sp cell lysates.

Properties

Form	Liquid
Storage instructions	Shipped at 4°C. Store at +4°C short term (1-2 weeks). Upon delivery aliquot. Store at -20°C long term. Avoid freeze / thaw cycle.
Storage buffer	pH: 7.2 Preservative: 0.02% Sodium azide Constituents: 59% PBS, 40% Glycerol
Purity	Immunogen affinity purified
Clonality	Polyclonal
Isotype	IgG

Applications

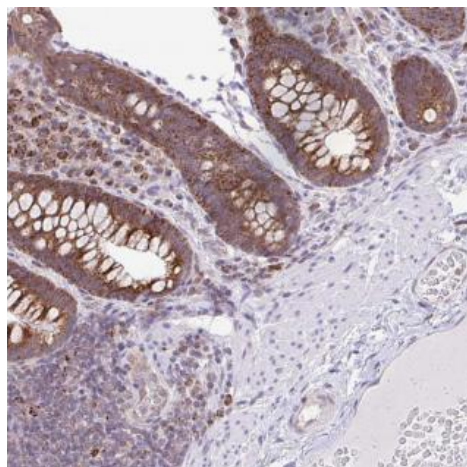
Our [Abpromise guarantee](#) covers the use of **ab185578** in the following tested applications.
The application notes include recommended starting dilutions; optimal dilutions/concentrations should be determined by the end user.

Application	Abreviews	Notes
WB		1/100 - 1/250. Predicted molecular weight: 34 kDa.
IHC-P		1/500 - 1/1000. Perform heat mediated antigen retrieval with citrate buffer pH 6 before commencing with IHC staining protocol.

Target

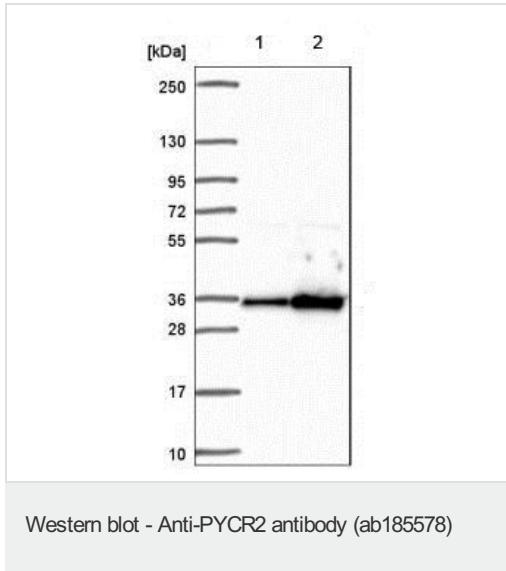
Function	Housekeeping enzyme that catalyzes the last step in proline biosynthesis. In some cell types, such as erythrocytes, its primary function may be the generation of NADP(+). Can utilize both NAD and NADP. Has higher affinity for NADP, but higher catalytic efficiency with NADH.
Tissue specificity	Detected in erythrocytes (at protein level).
Pathway	Amino-acid biosynthesis; L-proline biosynthesis; L-proline from L-glutamate 5-semialdehyde: step 1/1.
Sequence similarities	Belongs to the pyrroline-5-carboxylate reductase family.
Cellular localization	Cytoplasm.

Images



Immunohistochemical analysis of paraffin-embedded Human rectum tissue labeling PYCR2 with ab185578 at 1/500 dilution.

Immunohistochemistry (Formalin/PFA-fixed paraffin-embedded sections) - Anti-PYCR2 antibody (ab185578)



All lanes : Anti-PYCR2 antibody (ab185578) at 1/100 dilution

Lane 1 : RT4 cell lysate

Lane 2 : U251MG sp cell lysate

Predicted band size: 34 kDa

Please note: All products are "FOR RESEARCH USE ONLY. NOT FOR USE IN DIAGNOSTIC PROCEDURES"

Our Abpromise to you: Quality guaranteed and expert technical support

- Replacement or refund for products not performing as stated on the datasheet
- Valid for 12 months from date of delivery
- Response to your inquiry within 24 hours
- We provide support in Chinese, English, French, German, Japanese and Spanish
- Extensive multi-media technical resources to help you
- We investigate all quality concerns to ensure our products perform to the highest standards

If the product does not perform as described on this datasheet, we will offer a refund or replacement. For full details of the Abpromise, please visit <https://www.abcam.com/abpromise> or contact our technical team.

Terms and conditions

- Guarantee only valid for products bought direct from Abcam or one of our authorized distributors