

Product datasheet

Anti-Pyrophosphatase 1 antibody [EPR11282] ab181126

Recombinant RabMAb

3 Images

Overview

Product name	Anti-Pyrophosphatase 1 antibody [EPR11282]
Description	Rabbit monoclonal [EPR11282] to Pyrophosphatase 1
Host species	Rabbit
Tested applications	Suitable for: WB, Flow Cyt, IP
Species reactivity	Reacts with: Human
Immunogen	Synthetic peptide (the amino acid sequence is considered to be commercially sensitive) within Human Pyrophosphatase 1 aa 250 to the C-terminus. The exact sequence is proprietary. Database link: Q15181
Positive control	HeLa, HepG2, 293T or Molt4 lysate, HepG2 cells.
General notes	

Our RabMAb[®] technology is a patented hybridoma-based technology for making rabbit monoclonal antibodies. For details on our patents, please refer to [RabMAb[®] patents](#).

This product is a [recombinant rabbit monoclonal antibody](#).

Properties

Form	Liquid
Storage instructions	Shipped at 4°C. Store at +4°C short term (1-2 weeks). Upon delivery aliquot. Store at -20°C long term. Avoid freeze / thaw cycle.
Storage buffer	Preservative: 0.01% Sodium azide Constituents: 40% Glycerol, 0.05% BSA, 59% PBS
Purity	Tissue culture supernatant
Clonality	Monoclonal
Clone number	EPR11282
Isotype	IgG

Applications

Our [Abpromise guarantee](#) covers the use of **ab181126** in the following tested applications.

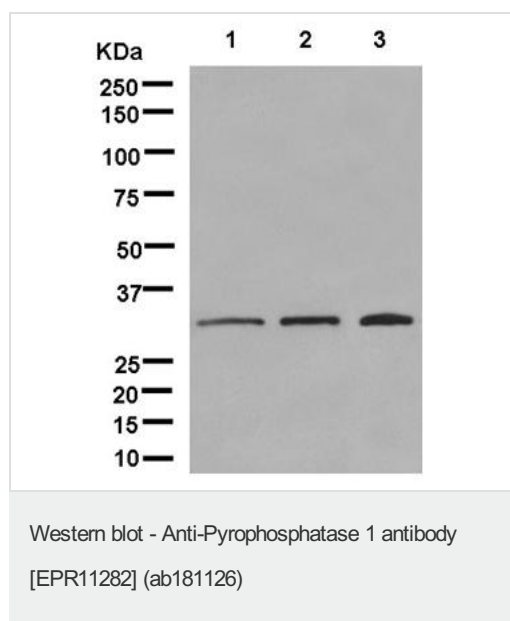
The application notes include recommended starting dilutions; optimal dilutions/concentrations should be determined by the end user.

Application	Abreviews	Notes
WB		1/10000 - 1/50000. Detects a band of approximately 33 kDa.
Flow Cyt		1/290. ab172730 - Rabbit monoclonal IgG, is suitable for use as an isotype control with this antibody.
IP		1/60.

Target

Tissue specificity	Expressed ubiquitously.
Sequence similarities	Belongs to the PPase family.
Cellular localization	Cytoplasm.

Images



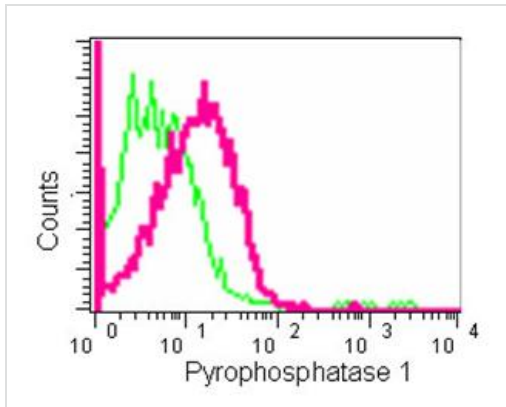
All lanes : Anti-Pyrophosphatase 1 antibody [EPR11282] (ab181126) at 1/10000 dilution

All lanes : Anti-Pyrophosphatase 1 antibody [EPR11282] (ab181126)

Lysates/proteins at 20 µg per lane.

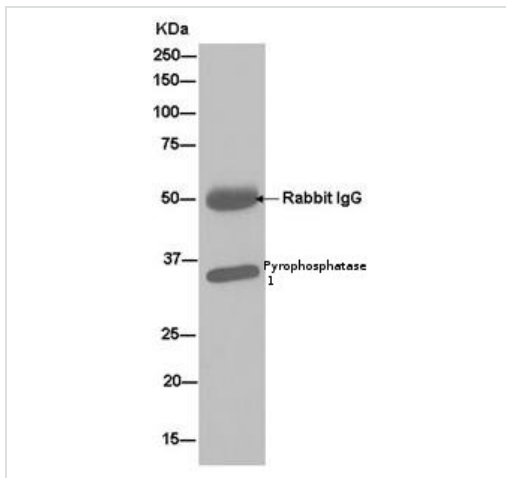
Secondary

All lanes : Goat Anti-Rabbit IgG, (H+L), Peroxidase conjugated at 1/1000 dilution



Flow Cytometry - Anti-Pyrophosphatase 1 antibody
[EPR11282] (ab181126)

Flow cytometry analysis of HepG2 cells using ab181126 at a 1/290 dilution (red) or a Rabbit monoclonal IgG (negative) (green). Goat anti rabbit IgG (FITC) secondary used at a 1/150 dilution.



Immunoprecipitation - Anti-Pyrophosphatase 1
antibody [EPR11282] (ab181126)

Detection of Human Pyrophosphatase 1 by Western Blot of Immunoprecipitate. MOLT4 whole cell lysate loaded, ab181126 used for blotting immunoprecipitated Pyrophosphatase 1 at a 1/60 dilution. Goat Anti-Rabbit IgG, (H+L), Peroxidase conjugated secondary used at a 1/1000 dilution.

Please note: All products are "FOR RESEARCH USE ONLY. NOT FOR USE IN DIAGNOSTIC PROCEDURES"

Our Abpromise to you: Quality guaranteed and expert technical support

- Replacement or refund for products not performing as stated on the datasheet
- Valid for 12 months from date of delivery
- Response to your inquiry within 24 hours

- We provide support in Chinese, English, French, German, Japanese and Spanish
- Extensive multi-media technical resources to help you
- We investigate all quality concerns to ensure our products perform to the highest standards

If the product does not perform as described on this datasheet, we will offer a refund or replacement. For full details of the Abpromise, please visit <https://www.abcam.com/abpromise> or contact our technical team.

Terms and conditions

- Guarantee only valid for products bought direct from Abcam or one of our authorized distributors