

Product datasheet

Anti-RAB3GAP1 antibody ab236989

4 Images

Overview

Product name	Anti-RAB3GAP1 antibody
Description	Rabbit polyclonal to RAB3GAP1
Host species	Rabbit
Tested applications	Suitable for: IHC-P, WB, ICC/IF
Species reactivity	Reacts with: Human
Immunogen	Recombinant fragment corresponding to Human RAB3GAP1 aa 527-653. Database link: Q15042
Positive control	WB: HEK-293, Jurkat and HeLa whole cell lysates. IHC-P: Human kidney and testis tissues. ICC-IF: HeLa cells.

Properties

Form	Liquid
Storage instructions	Shipped at 4°C. Store at +4°C short term (1-2 weeks). Upon delivery aliquot. Store at -20°C long term. Avoid freeze / thaw cycle.
Storage buffer	pH: 7.40 Preservative: 0.03% Proclin Constituents: PBS, 50% Glycerol
Purity	Protein G purified
Purification notes	Purity >95%.
Clonality	Polyclonal
Isotype	IgG

Applications

Our [Abpromise guarantee](#) covers the use of **ab236989** in the following tested applications.

The application notes include recommended starting dilutions; optimal dilutions/concentrations should be determined by the end user.

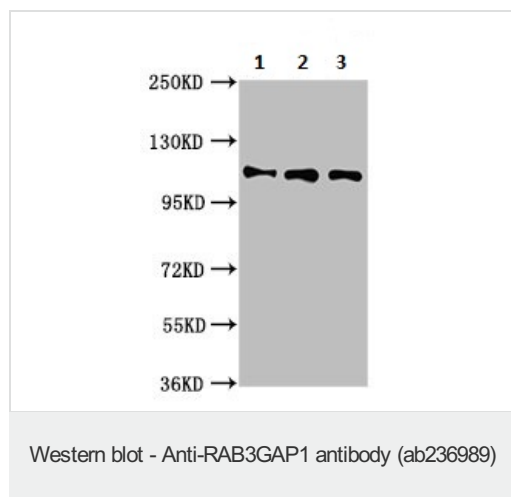
Application	Abreviews	Notes
IHC-P		1/200 - 1/500.

Application	Abreviews	Notes
WB		1/500 - 1/5000. Predicted molecular weight: 111 kDa.
ICC/IF		1/50 - 1/200.

Target

Function	Probable catalytic subunit of a GTPase activating protein that has specificity for Rab3 subfamily (RAB3A, RAB3B, RAB3C and RAB3D). Rab3 proteins are involved in regulated exocytosis of neurotransmitters and hormones. Specifically converts active Rab3-GTP to the inactive form Rab3-GDP. Required for normal eye and brain development. May participate in neurodevelopmental processes such as proliferation, migration and differentiation before synapse formation, and non-synaptic vesicular release of neurotransmitters.
Tissue specificity	Ubiquitous.
Involvement in disease	Defects in RAB3GAP1 are the cause of Warburg micro syndrome type 1 (WARBM1) [MIM:600118]. A rare syndrome characterized by microcephaly, microphthalmia, microcornia, congenital cataracts, optic atrophy, cortical dysplasia, in particular corpus callosum hypoplasia, severe mental retardation, spastic diplegia, and hypogonadism.
Sequence similarities	Belongs to the Rab3-GAP catalytic subunit family.
Cellular localization	Cytoplasm. In neurons, it is enriched in the synaptic soluble fraction.

Images



All lanes : Anti-RAB3GAP1 antibody (ab236989) at 1/500 dilution

Lane 1 : HEK-293 (human epithelial cell line from embryonic kidney) whole cell lysate

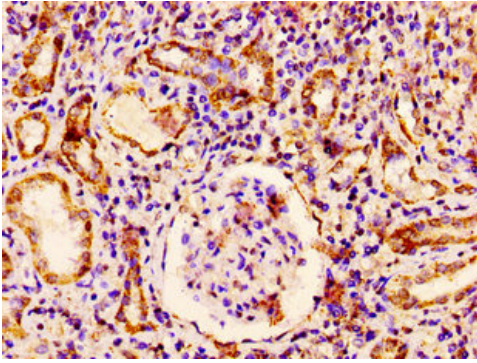
Lane 2 : Jurkat (human T cell leukemia cell line from peripheral blood) whole cell lysate

Lane 3 : HeLa (human epithelial cell line from cervix adenocarcinoma) whole cell lysate

Secondary

All lanes : Goat polyclonal to rabbit IgG at 1/50000 dilution

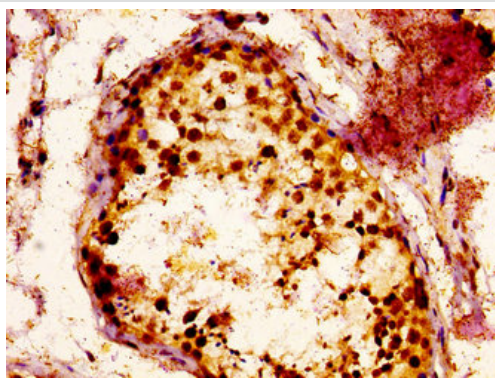
Predicted band size: 111 kDa



Immunohistochemistry (Formalin/PFA-fixed paraffin-embedded sections) - Anti-RAB3GAP1 antibody (ab236989)

Paraffin-embedded human kidney tissue stained for RAB3GAP1 using ab236989 at 1/300 dilution in immunohistochemical analysis.

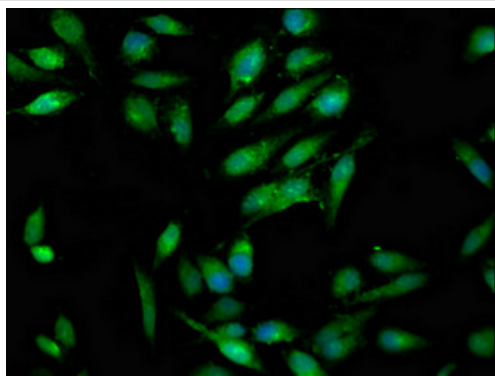
After dewaxing and hydration, antigen retrieval was mediated by high pressure in a citrate buffer (pH 6.0). Section was blocked with 10% normal goat serum for 30 minutes at RT. Then primary antibody (1% BSA) was incubated at 4° overnight. The primary is detected by a biotinylated secondary and visualized using an HRP conjugated SP system.



Immunohistochemistry (Formalin/PFA-fixed paraffin-embedded sections) - Anti-RAB3GAP1 antibody (ab236989)

Paraffin-embedded human testis tissue stained for RAB3GAP1 using ab236989 at 1/300 dilution in immunohistochemical analysis.

After dewaxing and hydration, antigen retrieval was mediated by high pressure in a citrate buffer (pH 6.0). Section was blocked with 10% normal goat serum for 30 minutes at RT. Then primary antibody (1% BSA) was incubated at 4° overnight. The primary is detected by a biotinylated secondary and visualized using an HRP conjugated SP system.



Immunocytochemistry/ Immunofluorescence - Anti-RAB3GAP1 antibody (ab236989)

HeLa (human epithelial cell line from cervix adenocarcinoma) cells stained for RAB3GAP1 (green) using ab236989 at 1/100 dilution in ICC/IF, followed by Alexa Fluor 488-conjugated goat anti-rabbit IgG (H+L). Counterstained with DAPI (blue).

The cells were fixed in 4% formaldehyde, permeabilized using 0.2% Triton X-100 and blocked in 10% normal goat serum. The cells were then incubate with primary antibody at 4°C overnight.

Please note: All products are "FOR RESEARCH USE ONLY. NOT FOR USE IN DIAGNOSTIC PROCEDURES"

Our Abpromise to you: Quality guaranteed and expert technical support

- Replacement or refund for products not performing as stated on the datasheet
- Valid for 12 months from date of delivery
- Response to your inquiry within 24 hours

- We provide support in Chinese, English, French, German, Japanese and Spanish
- Extensive multi-media technical resources to help you
- We investigate all quality concerns to ensure our products perform to the highest standards

If the product does not perform as described on this datasheet, we will offer a refund or replacement. For full details of the Abpromise, please visit <https://www.abcam.com/abpromise> or contact our technical team.

Terms and conditions

- Guarantee only valid for products bought direct from Abcam or one of our authorized distributors