

Product datasheet

HRP Anti-Rabbit antibody [SP137] ab270144

Recombinant RabMAb

3 Images

Overview

Product name	HRP Anti-Rabbit antibody [SP137]
Description	HRP Rabbit monoclonal [SP137] to Rabbit
Host species	Rabbit
Conjugation	HRP
Tested applications	Suitable for: IHC-P
Species reactivity	Reacts with: Mouse, Rat, Human
Immunogen	Chemical/ Small Molecule corresponding to Rabbit.
Positive control	IHC-P: Human normal tonsil tissue. Mouse and rat normal spleen tissue.

Properties

Form	Liquid
Storage instructions	Shipped at 4°C. Store at +4°C short term (1-2 weeks). Upon delivery aliquot. Store at -20°C long term. Avoid freeze / thaw cycle. Store In the Dark.
Storage buffer	pH: 7.4 Preservative: 0.1% 10% Proclin 300 Solution Constituents: 30% Glycerol (glycerin, glycerine), 1% BSA, 68.88% PBS
Purity	Protein A/G purified
Clonality	Monoclonal
Clone number	SP137
Isotype	IgG

Applications

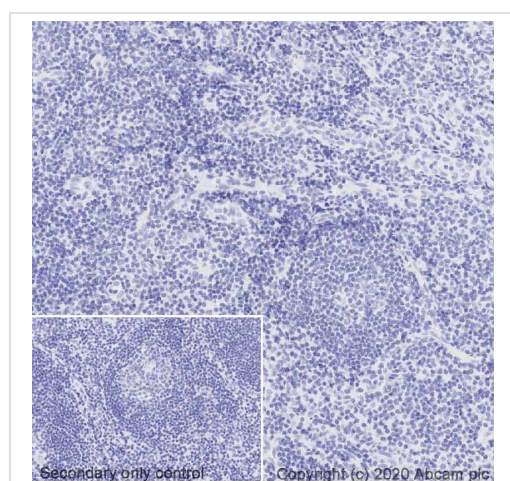
Our [Abpromise guarantee](#) covers the use of **ab270144** in the following tested applications.

The application notes include recommended starting dilutions; optimal dilutions/concentrations should be determined by the end user.

Application	Abreviews	Notes
IHC-P		1/50 - 1/100. Perform heat mediated antigen retrieval with Tris/EDTA buffer pH 9.0 before commencing with IHC staining protocol.

Target

Images



Immunohistochemistry (Formalin/PFA-fixed paraffin-embedded sections) - HRP Anti-Rabbit antibody [SP137] (ab270144)

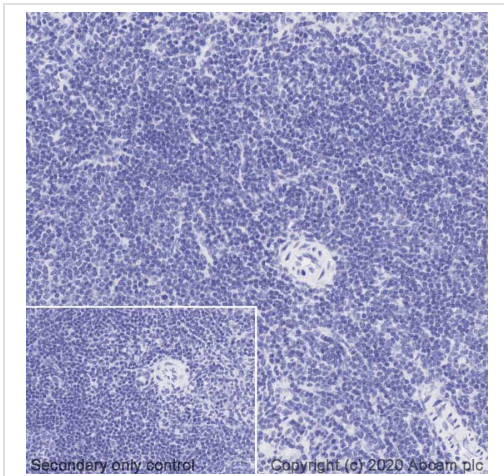
IHC image of IgG isotype control staining in a section of formalin-fixed paraffin-embedded normal human tonsil*, performed on a Leica BOND[®].

The section was pre-treated using heat mediated antigen retrieval with Tris/EDTA buffer (pH9, epitope retrieval solution 2) for 20mins. The section was then incubated with ab270144, 1/50 dilution, for 15 mins at room temperature. DAB was used as the chromogen. The section was then counterstained with haematoxylin and mounted with DPX.

The inset negative control image is taken from an identical assay without primary antibody.

For other IHC staining systems (automated and non-automated) customers should optimize variable parameters such as antigen retrieval conditions, primary antibody concentration and antibody incubation times.

*Tissue obtained from the Human Research Tissue Bank, supported by the NIHR Cambridge Biomedical Research Centre



Immunohistochemistry (Formalin/PFA-fixed paraffin-embedded sections) - HRP Anti-Rabbit antibody [SP137] (ab270144)

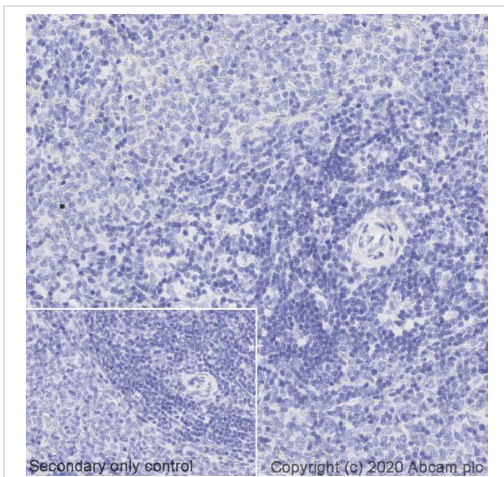
IHC image of IgG Isotype control staining in a section of formalin-fixed paraffin-embedded normal mouse spleen*, performed on a Leica BOND®.

The section was pre-treated using heat mediated antigen retrieval with Tris/EDTA buffer (pH9, epitope retrieval solution 2) for 20mins. The section was then incubated with ab270144, 1/100 dilution, for 15 mins at room temperature. DAB was used as the chromogen. The section was then counterstained with haematoxylin and mounted with DPX.

The inset negative control image is taken from an identical assay without primary antibody.

For other IHC staining systems (automated and non-automated) customers should optimize variable parameters such as antigen retrieval conditions, primary antibody concentration and antibody incubation times.

*Tissue obtained from the Human Research Tissue Bank, supported by the NIHR Cambridge Biomedical Research Centre.



Immunohistochemistry (Formalin/PFA-fixed paraffin-embedded sections) - HRP Anti-Rabbit antibody [SP137] (ab270144)

IHC image of IgG Isotype control staining in a section of formalin-fixed paraffin-embedded normal rat spleen*, performed on a Leica BOND®.

The section was pre-treated using heat mediated antigen retrieval with Tris/EDTA buffer (pH9, epitope retrieval solution 2) for 20mins. The section was then incubated with ab270144, 1/50 dilution, for 15 mins at room temperature. DAB was used as the chromogen. The section was then counterstained with haematoxylin and mounted with DPX.

The inset negative control image is taken from an identical assay without primary antibody.

For other IHC staining systems (automated and non-automated) customers should optimize variable parameters such as antigen retrieval conditions, primary antibody concentration and antibody incubation times.

*Tissue obtained from the Human Research Tissue Bank, supported by the NIHR Cambridge Biomedical Research Centre.

Please note: All products are "FOR RESEARCH USE ONLY. NOT FOR USE IN DIAGNOSTIC PROCEDURES"

Our Abpromise to you: Quality guaranteed and expert technical support

- Replacement or refund for products not performing as stated on the datasheet

- Valid for 12 months from date of delivery
- Response to your inquiry within 24 hours

- We provide support in Chinese, English, French, German, Japanese and Spanish
- Extensive multi-media technical resources to help you
- We investigate all quality concerns to ensure our products perform to the highest standards

If the product does not perform as described on this datasheet, we will offer a refund or replacement. For full details of the Abpromise, please visit <https://www.abcam.com/abpromise> or contact our technical team.

Terms and conditions

- Guarantee only valid for products bought direct from Abcam or one of our authorized distributors