

## Product datasheet

# Rabbit Anti-Chicken IgY H&L (Biotin) ab6752

9 References 2 Images

### Overview

|                            |   |
|----------------------------|---|
| <b>Product name</b>        | Rabbit Anti-Chicken IgY H&L (Biotin)  |
| <b>Host species</b>        | Rabbit  |
| <b>Target species</b>      | Chicken   |
| <b>Tested applications</b> | <b>Suitable for:</b> IHC-Fr, Immunomicroscopy, WB, Dot blot, ELISA, IHC-P, ICC/IF |
| <b>Immunogen</b>           | chicken IgY whole molecule  |
| <b>Conjugation</b>         | Biotin  |

### Properties

|                             |   |
|-----------------------------|---|
| <b>Form</b>                 | Liquid  |
| <b>Storage instructions</b> | Shipped at 4°C. Store at +4°C short term (1-2 weeks). Upon delivery aliquot. Store at -20°C or -80°C. Avoid freeze / thaw cycle.  |
| <b>Storage buffer</b>       | Preservative: 0.01% Sodium azide<br>Constituents: 0.878% Sodium chloride, 1% BSA, 0.424% Potassium phosphate  |
| <b>Purity</b>               | Affinity purified   |
| <b>Purification notes</b>   | Biotinamidocaproate N-Hydroxysuccinimide Ester (BAC). Biotin/Protein Ratio: 10-20 BAC molecules per Rabbit IgG molecule.  |
| <b>Conjugation notes</b>    | This product was prepared from monospecific antiserum by immunoaffinity chromatography using chicken IgG coupled to agarose beads followed by solid phase adsorption(s) to remove any unwanted reactivities |
| <b>Clonality</b>            | Polyclonal  |

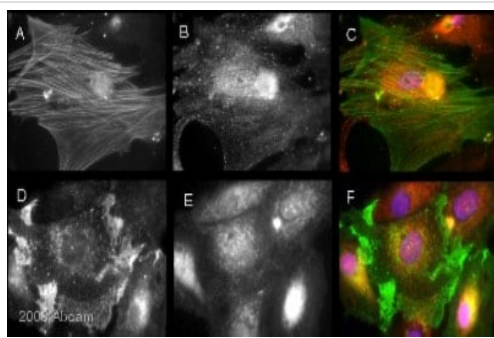
### Applications

**The Abpromise guarantee** Our [Abpromise guarantee](#) covers the use of ab6752 in the following tested applications. The application notes include recommended starting dilutions; optimal dilutions/concentrations should be determined by the end user.

| Application | Abreviews | Notes                                    |
|-------------|-----------|--|
| IHC-Fr      |           | Use at an assay dependent concentration. |

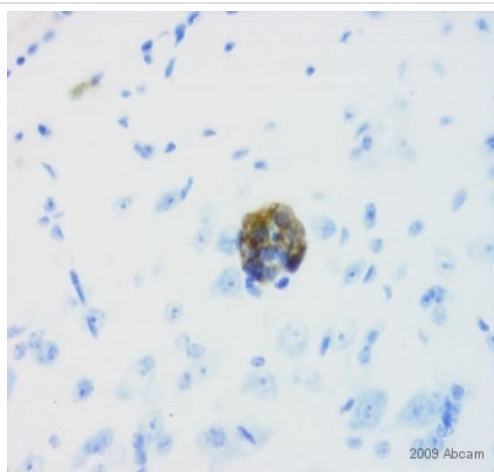
| Application      | Abreviews | Notes                                    |
|------------------|-----------|--|
| Immunomicroscopy |           | Use at an assay dependent concentration. |
| WB               |           | 1/2000 - 1/20000.                        |
| Dot blot         |           | Use at an assay dependent concentration. |
| ELISA            |           | 1/500000.                                |
| IHC-P            |           | Use at an assay dependent concentration. |
| ICC/IF           |           | 1/1000 - 1/5000.                         |

## Images



Immunocytochemistry/ Immunofluorescence - Rabbit  
Anti-Chicken IgY H&L (Biotin) (ab6752)

Ab6752 was used with the primary antibody [ab13989](#) in ICC/IF.  
See Abreview on [ab13989](#).



Immunohistochemistry (Frozen sections) - Rabbit  
Anti-Chicken IgY H&L (Biotin) (ab6752)

Ab6752 was used at dilution 1/1000 with the primary antibody  
[ab13970](#) in IHC-Fr. See the review on [ab13970](#).

**Please note:** All products are "FOR RESEARCH USE ONLY. NOT FOR USE IN DIAGNOSTIC PROCEDURES"

## **Our Abpromise to you: Quality guaranteed and expert technical support**

---

- Replacement or refund for products not performing as stated on the datasheet
- Valid for 12 months from date of delivery
- Response to your inquiry within 24 hours
  
- We provide support in Chinese, English, French, German, Japanese and Spanish
- Extensive multi-media technical resources to help you
- We investigate all quality concerns to ensure our products perform to the highest standards

If the product does not perform as described on this datasheet, we will offer a refund or replacement. For full details of the Abpromise, please visit <https://www.abcam.com/abpromise> or contact our technical team.

## **Terms and conditions**

---

- Guarantee only valid for products bought direct from Abcam or one of our authorized distributors