

Product datasheet

Rabbit Anti-Mouse IgG H&L (HRP) ab6728

★★★★★ 8 Abreviews 677 References 5 Images

Overview

Product name	Rabbit Anti-Mouse IgG H&L (HRP)
Host species	Rabbit
Target species	Mouse
Tested applications	Suitable for: Dot blot, ELISA, IHC-P, IHC-Fr, Immunomicroscopy, ICC/IF, WB
Immunogen	Mouse IgG whole molecule
Conjugation	HRP

Properties

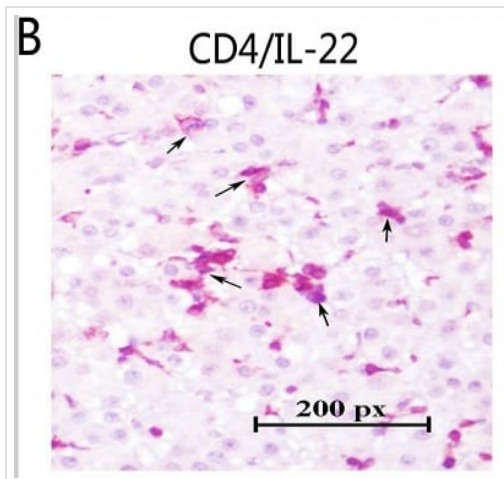
Form	Liquid
Storage instructions	Shipped at 4°C. Store at +4°C.
Storage buffer	Preservative: 0.01% Gentamicin sulphate Constituents: 0.42% Potassium phosphate, 0.87% Sodium chloride, 1% BSA
Purity	Affinity purified
Purification notes	This product was prepared from monospecific antiserum by immunoaffinity chromatography using Mouse IgG coupled to agarose beads.
Conjugation notes	Horseradish Peroxidase (HRP)
Clonality	Polyclonal
Isotype	IgG
General notes	Many of our customers have reported seeing brown precipitates in the vials. The brown precipitates are very common with HRP conjugated antibodies; we suggest vortexing the vial and using this antibody as normal. Our customer's feedback says the antibody worked great. If in case the antibody fails to give results then please contact our Scientific Support team for assistance.

Applications

The Abpromise guarantee Our [Abpromise guarantee](#) covers the use of ab6728 in the following tested applications. The application notes include recommended starting dilutions; optimal dilutions/concentrations should be determined by the end user.

Application	Abreviews	Notes
Dot blot		Use at an assay dependent dilution.
ELISA		1/1000.
IHC-P		Use at an assay dependent dilution.
IHC-Fr		Use at an assay dependent dilution.
Immunomicroscopy		Use at an assay dependent dilution.
ICC/IF		1/1000 - 1/5000.
WB	★★★★★ (8)	1/2000 - 1/10000. PubMed: 17200442

Images



Immunohistochemistry (Formalin/PFA-fixed paraffin-embedded sections) - Rabbit Anti-Mouse IgG H&L (HRP) (ab6728)

Gao et al PLoS One. 2016 Apr 28;11(4):e0154419. doi: 10.1371/journal.pone.0154419. eCollection 2016. Fig2. Reproduced under the Creative Commons license <http://creativecommons.org/licenses/by/4.0/>

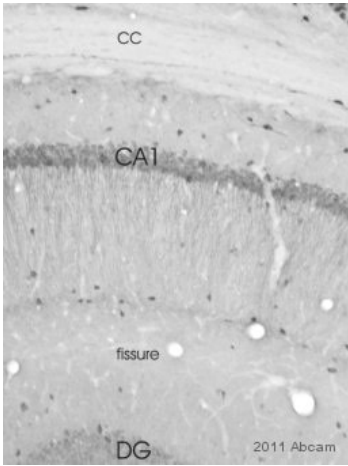
Distribution, expression and correlation of IL-22 cells with liver fibrosis in the liver.

Immunohistochemistry double staining identifies IL-22 cells were produced by CD4 cells in liver tissue (Panel B).

Black arrows indicate double-positive cells.

Paraffin-embedded, formalin-fixed human liver tissues were incubated with anti-IL-22 ([ab18499](#)) or α -SMA antibody ([ab7817](#)) overnight at 4°C followed by heat mediated antigen retrieval with sodium citrate buffer (pH 6.0, 0.1 mol/L) for 20mins and blocking endogenous peroxidase activity with 0.3% H₂O₂. Revelation of primary antibody was carried out using horseradish peroxidase (HRP)-conjugated rabbit polyclonal anti-mouse ([ab6728](#)), secondary antibody followed by diamino-benzidine (DAB) and haematoxylin coloration. Double staining was performed with 3-amino-9-ethyl-carbazole (red color) for IL-22 and BCIP/ NBT (indigo color) for CD4.

Positively stained cells were counted at high-power field (hpf, $\times 400$) according to described protocols.



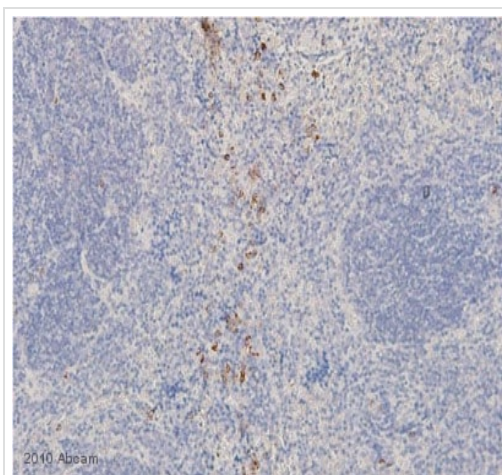
ab6728 was used at dilution 1/500 with the primary antibody [ab3089](#) in IHC-Fr (PFA perfusion). See the review on [ab3089](#).

Immunohistochemistry (PFA perfusion fixed frozen sections) - Rabbit Anti-Mouse IgG H&L (HRP) (ab6728)



ab6728 was used at dilution 1/2000 with the primary antibody [ab72009](#) in WB. See the review on [ab72009](#).

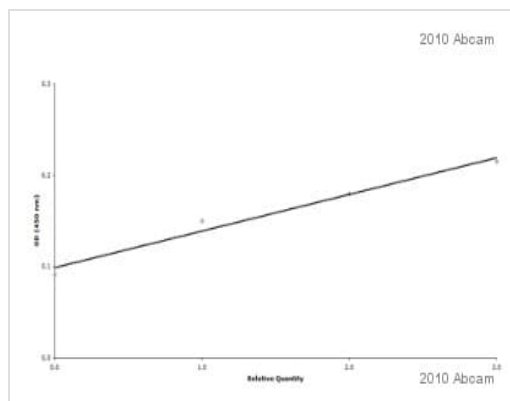
Western blot - Rabbit Anti-Mouse IgG H&L (HRP) (ab6728)



[ab81785](#) staining LC3A/B in Mouse kidney tissue sections by Immunohistochemistry (IHC-P - formaldehyde-fixed, paraffin-embedded sections). Tissue was fixed with formaldehyde and blocked with 5% protein block for 5 minutes at room temperature; antigen retrieval was by heat mediation. Samples were incubated with primary antibody (1/50) for 1 hour. Anti-mouse HRP ([ab6728](#)) (1/200) was used as the secondary antibody.

Immunohistochemistry (Formalin/PFA-fixed paraffin-embedded sections) - Rabbit Anti-Mouse IgG H&L (HRP) ([ab6728](#))

This image is courtesy of an anonymous Abreview.



[ab6728](#) was used at dilution 1/1000 with the primary antibody [ab11038](#) in ELISA. See the review on [ab11038](#).

ELISA - Rabbit Anti-Mouse IgG H&L (HRP) ([ab6728](#))

Please note: All products are "FOR RESEARCH USE ONLY. NOT FOR USE IN DIAGNOSTIC PROCEDURES"

Our Abpromise to you: Quality guaranteed and expert technical support

- Replacement or refund for products not performing as stated on the datasheet
- Valid for 12 months from date of delivery
- Response to your inquiry within 24 hours

- We provide support in Chinese, English, French, German, Japanese and Spanish
- Extensive multi-media technical resources to help you
- We investigate all quality concerns to ensure our products perform to the highest standards

If the product does not perform as described on this datasheet, we will offer a refund or replacement. For full details of the Abpromise, please visit <https://www.abcam.com/abpromise> or contact our technical team.

Terms and conditions

- Guarantee only valid for products bought direct from Abcam or one of our authorized distributors