


Product datasheet

Anti-RABEP2 antibody ab190003

[1 References](#) [2 Images](#)

Overview

Product name	Anti-RABEP2 antibody
Description	Rabbit polyclonal to RABEP2
Host species	Rabbit
Tested applications	Suitable for: IHC-P, WB
Species reactivity	Reacts with: Human Predicted to work with: Mouse, Rat 
Immunogen	Synthetic peptide corresponding to Human RABEP2 aa 353-402. Sequence: SQAQERVQLQMAELVTTHKCLHHEVKRLNEENQGLRAEQ LPSSAPQGSQQ Database link: Q9H5N1 Run BLAST with Run BLAST with
Positive control	Human colon tissue. Extracts from HeLa, Jurkat, 293 and HUVEC cells.
General notes	<p>Reproducibility is key to advancing scientific discovery and accelerating scientists' next breakthrough.</p> <p>Abcam is leading the way with our range of recombinant antibodies, knockout-validated antibodies and knockout cell lines, all of which support improved reproducibility.</p> <p>We are also planning to innovate the way in which we present recommended applications and species on our product datasheets, so that only applications & species that have been tested in our own labs, our suppliers or by selected trusted collaborators are covered by our Abpromise™ guarantee.</p> <p>In preparation for this, we have started to update the applications & species that this product is Abpromise guaranteed for.</p> <p>We are also updating the applications & species that this product has been “predicted to work with,” however this information is not covered by our Abpromise guarantee.</p> <p>Applications & species from publications and Abreviews that have not been tested in our own labs or in those of our suppliers are not covered by the Abpromise guarantee.</p> <p>Please check that this product meets your needs before purchasing. If you have any questions, special requirements or concerns, please send us an inquiry and/or contact our Support team ahead of purchase. Recommended alternatives for this product can be found below, as well as customer reviews and Q&As.</p>

Properties

Form	Liquid
Storage instructions	Shipped at 4°C. Store at +4°C short term (1-2 weeks). Upon delivery aliquot. Store at -20°C long term. Avoid freeze / thaw cycle.
Storage buffer	pH: 7.40 Preservative: 0.02% Sodium azide Constituents: 50% Glycerol, 0.87% Sodium chloride, 49% PBS PBS without Mg ²⁺ , Ca ²⁺
Purity	Immunogen affinity purified
Clonality	Polyclonal
Isotype	IgG

Applications

Our [Abpromise guarantee](#) covers the use of **ab190003** in the following tested applications.

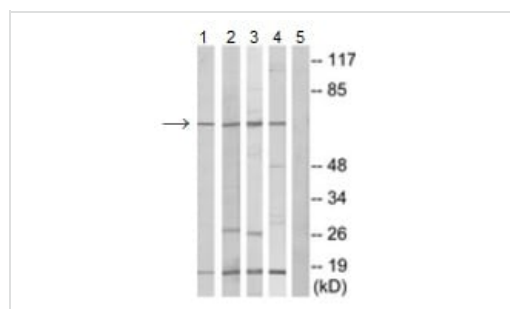
The application notes include recommended starting dilutions; optimal dilutions/concentrations should be determined by the end user.

Application	Abreviews	Notes
IHC-P		Use a concentration of 10 µg/ml.
WB		1/500 - 1/1000. Predicted molecular weight: 64 kDa.

Target

Function	Plays a role in membrane trafficking and in homotypic early endosome fusion.
Sequence similarities	Belongs to the rabaptin family.
Cellular localization	Cytoplasm. Early endosome.

Images



Western blot - Anti-RABEP2 antibody (ab190003)

All lanes : Anti-RABEP2 antibody (ab190003) at 1/500 dilution

Lane 1 : Extracts from HeLa cells

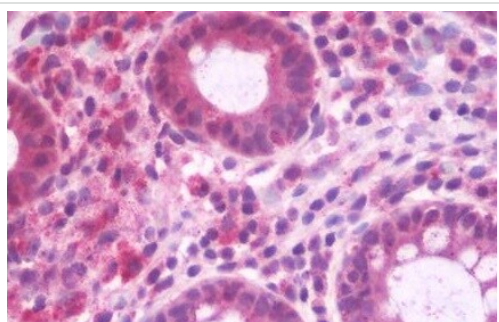
Lane 2 : Extracts from Jurkat cells

Lane 3 : Extracts from 293 cells

Lane 4 : Extracts from HUVEC cells

Lane 5 : Extracts from HeLa cells with synthesized peptide

Predicted band size: 64 kDa



Immunohistochemistry (Formalin/PFA-fixed paraffin-embedded sections) - Anti-RABEP2 antibody (ab190003)

Immunohistochemical analysis of formalin-fixed paraffin-embedded Human colon sections labeling RABEP2 with ab190003 at 10 µg/ml.

Please note: All products are "FOR RESEARCH USE ONLY. NOT FOR USE IN DIAGNOSTIC PROCEDURES"

Our Abpromise to you: Quality guaranteed and expert technical support

- Replacement or refund for products not performing as stated on the datasheet
- Valid for 12 months from date of delivery
- Response to your inquiry within 24 hours
- We provide support in Chinese, English, French, German, Japanese and Spanish
- Extensive multi-media technical resources to help you
- We investigate all quality concerns to ensure our products perform to the highest standards

If the product does not perform as described on this datasheet, we will offer a refund or replacement. For full details of the Abpromise, please visit <https://www.abcam.com/abpromise> or contact our technical team.

Terms and conditions

- Guarantee only valid for products bought direct from Abcam or one of our authorized distributors