

Product datasheet

Anti-RABGAP1L/HHL antibody ab229956

3 Images

Overview

Product name	Anti-RABGAP1L/HHL antibody
Description	Rabbit polyclonal to RABGAP1L/HHL
Host species	Rabbit
Tested applications	Suitable for: IHC-P, WB
Species reactivity	Reacts with: Mouse, Human
Immunogen	Recombinant fragment corresponding to Human RABGAP1L/HHL aa 11-262. Database link: B7ZAP0
Positive control	IHC-P: Human liver cancer and gastric cancer tissues. WB: MCF7, K562 and HepG2 whole cell lysates; Mouse stomach, heart, brain and liver lysates.
General notes	This product was previously labelled as RABGAP1L

Reproducibility is key to advancing scientific discovery and accelerating scientists' next breakthrough.

Abcam is leading the way with our range of recombinant antibodies, knockout-validated antibodies and knockout cell lines, all of which support improved reproducibility.

We are also planning to innovate the way in which we present recommended applications and species on our product datasheets, so that only applications & species that have been tested in our own labs, our suppliers or by selected trusted collaborators are covered by our Abpromise™ guarantee.

In preparation for this, we have started to update the applications & species that this product is Abpromise guaranteed for.

We are also updating the applications & species that this product has been “predicted to work with,” however this information is not covered by our Abpromise guarantee.

Applications & species from publications and Abreviews that have not been tested in our own labs or in those of our suppliers are not covered by the Abpromise guarantee.

Please check that this product meets your needs before purchasing. If you have any questions, special requirements or concerns, please send us an inquiry and/or contact our Support team ahead of purchase. Recommended alternatives for this product can be found below, as well as customer reviews and Q&As.

Properties

Form	Liquid
Storage instructions	Shipped at 4°C. Store at +4°C short term (1-2 weeks). Upon delivery aliquot. Store at -20°C long term. Avoid freeze / thaw cycle.
Storage buffer	pH: 7.40 Constituents: 50% Glycerol (glycerin, glycerine), PBS, 0.03% Proclin 300
Purity	Protein G purified
Purification notes	Purity >95%.
Clonality	Polyclonal
Isotype	IgG

Applications

Our [Abpromise guarantee](#) covers the use of **ab229956** in the following tested applications.

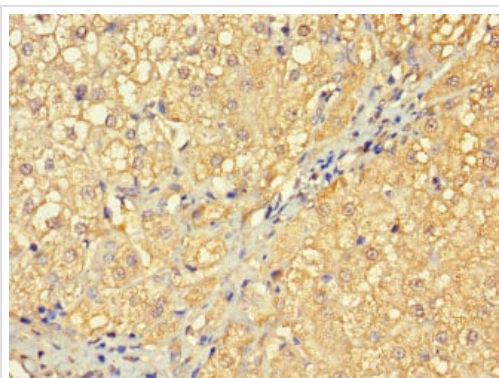
The application notes include recommended starting dilutions; optimal dilutions/concentrations should be determined by the end user.

Application	Abreviews	Notes
IHC-P		1/20 - 1/200.
WB		1/2000 - 1/5000. Detects a band of approximately 30 kDa (predicted molecular weight: 30 kDa).

Target

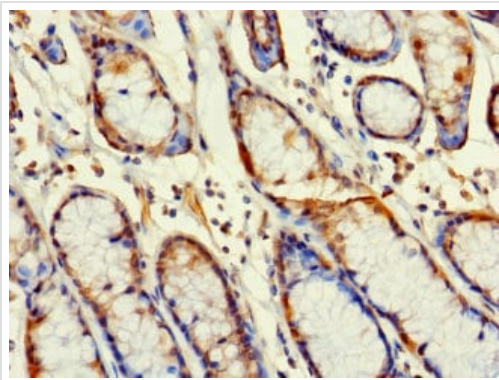
Relevance RABGAP1L contains one PID domain and one Rab-GAP TBC domain. It is up-regulated in esophageal squamous cell carcinomas. Expression is strongly inhibited in the medial septum and hippocampus brain regions of some Alzheimer disease patients. There are nine named isoforms.

Images



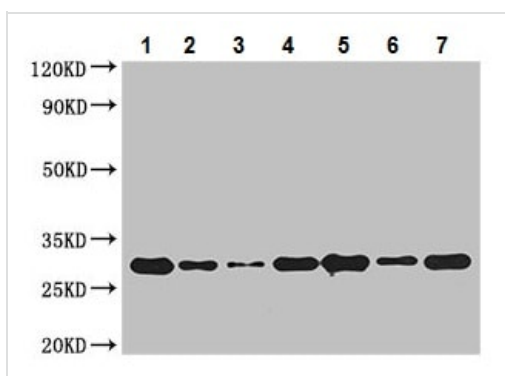
Paraffin-embedded human liver cancer tissue stained for RABGAP1L/HHL using ab229956 at 1/100 dilution in immunohistochemical analysis.

Immunohistochemistry (Formalin/PFA-fixed paraffin-embedded sections) - Anti-RABGAP1L/HHL antibody (ab229956)



Immunohistochemistry (Formalin/PFA-fixed paraffin-embedded sections) - Anti-RABGAP1L/HHL antibody (ab229956)

Paraffin-embedded human gastric cancer tissue stained for RABGAP1L/HHL using ab229956 at 1/100 dilution in immunohistochemical analysis.



Western blot - Anti-RABGAP1L/HHL antibody (ab229956)

All lanes : Anti-RABGAP1L/HHL antibody (ab229956) at 1/2000 dilution

Lane 1 : MCF7 (human breast adenocarcinoma cell line) whole cell lysate

Lane 2 : K562 (human chronic myelogenous leukemia cell line from bone marrow) whole cell lysate

Lane 3 : HepG2 (human liver hepatocellular carcinoma cell line) whole cell lysate

Lane 4 : Mouse stomach lysate

Lane 5 : Mouse heart lysate

Lane 6 : Mouse brain lysate

Lane 7 : Mouse liver lysate

Secondary

All lanes : Goat polyclonal to rabbit IgG at 1/50000 dilution

Predicted band size: 30 kDa

Observed band size: 30 kDa

Please note: All products are "FOR RESEARCH USE ONLY. NOT FOR USE IN DIAGNOSTIC PROCEDURES"

Our Abpromise to you: Quality guaranteed and expert technical support

- Replacement or refund for products not performing as stated on the datasheet
- Valid for 12 months from date of delivery
- Response to your inquiry within 24 hours
- We provide support in Chinese, English, French, German, Japanese and Spanish

- Extensive multi-media technical resources to help you
- We investigate all quality concerns to ensure our products perform to the highest standards

If the product does not perform as described on this datasheet, we will offer a refund or replacement. For full details of the Abpromise, please visit <https://www.abcam.com/abpromise> or contact our technical team.

Terms and conditions

- Guarantee only valid for products bought direct from Abcam or one of our authorized distributors