


Product datasheet

Anti-RAD52 antibody ab180721

2 Images

Overview

<b>Product name</b>	Anti-RAD52 antibody
<b>Description</b>	Rabbit polyclonal to RAD52
<b>Host species</b>	Rabbit
<b>Tested applications</b>	<b>Suitable for:</b> WB, IHC-P
<b>Species reactivity</b>	<b>Reacts with:</b> Human <b>Predicted to work with:</b> Mouse, Rat 
<b>Immunogen</b>	Synthetic peptide corresponding to Human RAD52. Database link: <a href="#">P43351</a>
<b>Positive control</b>	K562 cell extract; Human lung tissue
<b>General notes</b>	<p>The Life Science industry has been in the grips of a reproducibility crisis for a number of years. Abcam is leading the way in addressing this with our range of recombinant monoclonal antibodies and knockout edited cell lines for gold-standard validation. Please check that this product meets your needs before purchasing.</p> <p>If you have any questions, special requirements or concerns, please send us an inquiry and/or contact our Support team ahead of purchase. Recommended alternatives for this product can be found below, along with publications, customer reviews and Q&amp;As</p>

Properties

<b>Form</b>	Liquid
<b>Storage instructions</b>	Shipped at 4°C. Store at +4°C short term (1-2 weeks). Upon delivery aliquot. Store at -20°C long term. Avoid freeze / thaw cycle.
<b>Storage buffer</b>	pH: 7.30 Preservative: 0.02% Sodium azide Constituents: 49% PBS, 50% Glycerol
<b>Purity</b>	Immunogen affinity purified
<b>Clonality</b>	Polyclonal
<b>Isotype</b>	IgG

Applications

## The Abpromise guarantee

Our [Abpromise guarantee](#) covers the use of ab180721 in the following tested applications.

The application notes include recommended starting dilutions; optimal dilutions/concentrations should be determined by the end user.

Application	Abreviews	Notes
WB		1/500 - 1/1000. Predicted molecular weight: 46 kDa.
IHC-P		1/50 - 1/100. <a href="#">ab171870</a> - Rabbit polyclonal IgG, is suitable for use as an isotype control with this antibody.

## Target

### Function

Involved in double-stranded break repair. Plays a central role in genetic recombination and DNA repair by promoting the annealing of complementary single-stranded DNA and by stimulation of the RAD51 recombinase.

### Sequence similarities

Belongs to the RAD52 family.

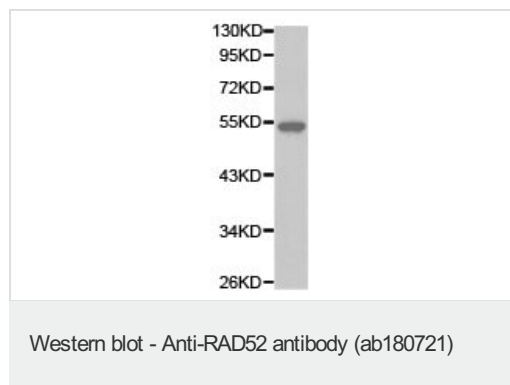
### Post-translational modifications

Phosphorylated upon DNA damage, probably by ATM or ATR.

### Cellular localization

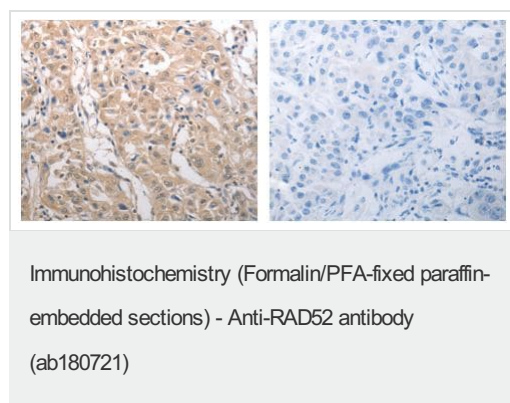
Nucleus.

## Images



Anti-RAD52 antibody (ab180721) at 1/500 dilution + K562 cell extract

**Predicted band size:** 46 kDa



Immunohistochemical analysis of paraffin-embedded Human lung tissue labeling RAD52 with ab180721 at a 1/50 dilution.

### **Our Abpromise to you: Quality guaranteed and expert technical support**

---

- Replacement or refund for products not performing as stated on the datasheet
- Valid for 12 months from date of delivery
- Response to your inquiry within 24 hours
  
- We provide support in Chinese, English, French, German, Japanese and Spanish
- Extensive multi-media technical resources to help you
- We investigate all quality concerns to ensure our products perform to the highest standards

If the product does not perform as described on this datasheet, we will offer a refund or replacement. For full details of the Abpromise, please visit <https://www.abcam.com/abpromise> or contact our technical team.

### **Terms and conditions**

---

- Guarantee only valid for products bought direct from Abcam or one of our authorized distributors