


## Product datasheet

# Anti-Rad6 antibody ab31917

★★★★☆ 2 Abreviews
  6 References
 5 Images

### Overview

---

<b>Product name</b>	Anti-Rad6 antibody
<b>Description</b>	Rabbit polyclonal to Rad6
<b>Host species</b>	Rabbit
<b>Tested applications</b>	<b>Suitable for:</b> IHC-P, WB
<b>Species reactivity</b>	<b>Reacts with:</b> Mouse, Rat, Human, Zebrafish <b>Predicted to work with:</b> Rabbit, Chicken, Cow, Saccharomyces cerevisiae, Xenopus laevis, Drosophila melanogaster 
<b>Immunogen</b>	Synthetic peptide corresponding to Human Rad6 aa 1-100 conjugated to keyhole limpet haemocyanin. (Peptide available as <a href="#">ab28495</a> )
<b>General notes</b>	<p>Reproducibility is key to advancing scientific discovery and accelerating scientists' next breakthrough.</p> <p>Abcam is leading the way with our range of recombinant antibodies, knockout-validated antibodies and knockout cell lines, all of which support improved reproducibility.</p> <p>We are also planning to innovate the way in which we present recommended applications and species on our product datasheets, so that only applications &amp; species that have been tested in our own labs, our suppliers or by selected trusted collaborators are covered by our Abpromise™ guarantee.</p> <p>In preparation for this, we have started to update the applications &amp; species that this product is Abpromise guaranteed for.</p> <p>We are also updating the applications &amp; species that this product has been “predicted to work with,” however this information is not covered by our Abpromise guarantee.</p> <p>Applications &amp; species from publications and Abreviews that have not been tested in our own labs or in those of our suppliers are not covered by the Abpromise guarantee.</p> <p>Please check that this product meets your needs before purchasing. If you have any questions, special requirements or concerns, please send us an inquiry and/or contact our Support team ahead of purchase. Recommended alternatives for this product can be found below, as well as customer reviews and Q&amp;As.</p>

### Properties

---

<b>Form</b>	Liquid
<b>Storage instructions</b>	Shipped at 4°C. Store at +4°C short term (1-2 weeks). Upon delivery aliquot. Store at -20°C or -80°C. Avoid freeze / thaw cycle.
<b>Storage buffer</b>	pH: 7.40 Preservative: 0.02% Sodium azide Constituent: PBS
	Batches of this product that have a concentration < 1mg/ml may have BSA added as a stabilising agent. If you would like information about the formulation of a specific lot, please contact our scientific support team who will be happy to help.
<b>Purity</b>	Immunogen affinity purified
<b>Clonality</b>	Polyclonal
<b>Isotype</b>	IgG

## Applications

Our [Abpromise guarantee](#) covers the use of **ab31917** in the following tested applications.

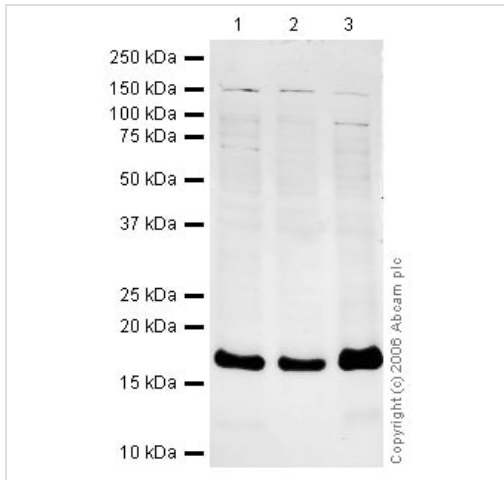
The application notes include recommended starting dilutions; optimal dilutions/concentrations should be determined by the end user.

Application	Abreviews	Notes
IHC-P		Use a concentration of 1 µg/ml. Perform heat mediated antigen retrieval before commencing with IHC staining protocol.
WB		Use a concentration of 1 µg/ml. Detects a band of approximately 17 kDa (predicted molecular weight: 17 kDa).

## Target

<b>Function</b>	Accepts ubiquitin from the E1 complex and catalyzes its covalent attachment to other proteins. In association with the E3 enzyme BRE1 (RNF20 and/or RNF40), it plays a role in transcription regulation by catalyzing the monoubiquitination of histone H2B at 'Lys-120' to form H2BK120ub1. H2BK120ub1 gives a specific tag for epigenetic transcriptional activation, elongation by RNA polymerase II, telomeric silencing, and is also a prerequisite for H3K4me and H3K79me formation. In vitro catalyzes 'Lys-11', as well as 'Lys-48'-linked polyubiquitination. Required for postreplication repair of UV-damaged DNA.
<b>Pathway</b>	Protein modification; protein ubiquitination.
<b>Sequence similarities</b>	Belongs to the ubiquitin-conjugating enzyme family.

## Images



Western blot - Anti-Rad6 antibody (ab31917)

**All lanes :** Anti-Rad6 antibody (ab31917) at 1 µg/ml

**Lane 1 :** HeLa (Human epithelial carcinoma cell line) Whole Cell Lysate

**Lane 2 :** Jurkat whole cell lysate ([ab7899](#))

**Lane 3 :** HeLa (Human epithelial carcinoma cell line) Nuclear Lysate

Lysates/proteins at 20 µg per lane.

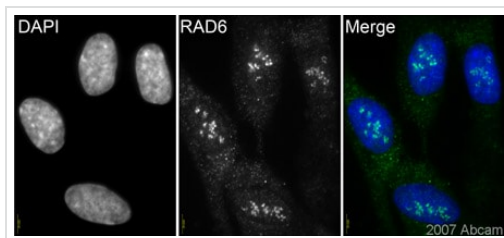
**Secondary**

**All lanes :** IRDye 680 Conjugated Goat Anti-Rabbit IgG (H&L) at 1/15000 dilution

Performed under reducing conditions.

**Predicted band size:** 17 kDa

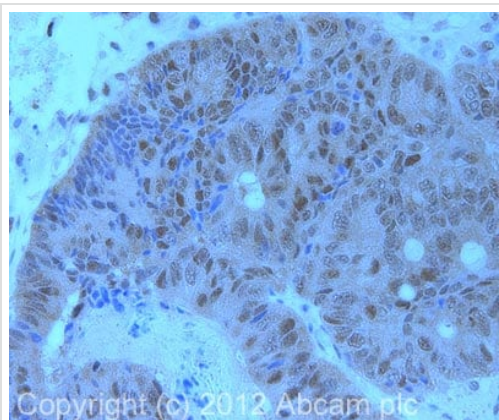
**Observed band size:** 17 kDa



Immunocytochemistry/ Immunofluorescence - Anti-Rad6 antibody (ab31917)

This image is courtesy of an Abreview submitted by Dr Kirk McManus

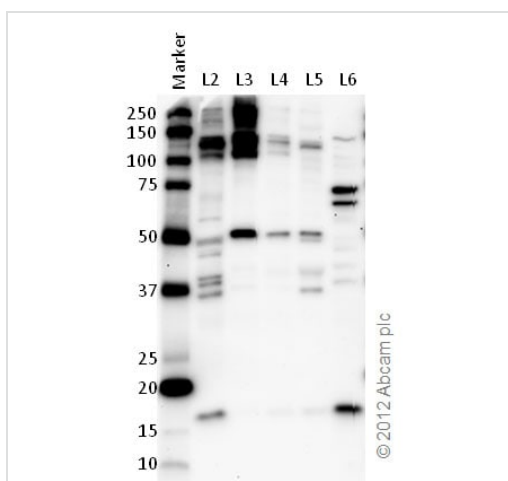
ab31917 (1/200) staining Rad6 in RPE-1 cells (green). Cells were fixed in paraformaldehyde, permeabilised with Triton X100 and counterstained with DAPI in order to highlight the nucleus (blue). Please refer to abreview for further details.



Immunohistochemistry (Formalin/PFA-fixed paraffin-embedded sections) - Anti-Rad6 antibody (ab31917)

IHC image of ab31917 staining in human colon carcinoma formalin fixed paraffin embedded tissue section, performed on a Leica Bond™ system using the standard protocol F. The section was pre-treated using heat mediated antigen retrieval with sodium citrate buffer (pH6, epitope retrieval solution 1) for 20 mins. The section was then incubated with ab31917, 1µg/ml, for 15 mins at room temperature and detected using an HRP conjugated compact polymer system. DAB was used as the chromogen. The section was then counterstained with haematoxylin and mounted with DPX.

For other IHC staining systems (automated and non-automated) customers should optimize variable parameters such as antigen retrieval conditions, primary antibody concentration and antibody incubation times.



Western blot - Anti-Rad6 antibody (ab31917)

**All lanes :** Anti-Rad6 antibody (ab31917) at 1 µg/ml

**Lane 1 :** Marker

**Lane 2 :** Zebrafish brain homogenate

**Lane 3 :** Zebrafish heart homogenate

**Lane 4 :** Zebrafish liver homogenate

**Lane 5 :** Zebrafish skeletal muscle homogenate

**Lane 6 :** HeLa (Human epithelial carcinoma cell line) Whole Cell Lysate

Lysates/proteins at 10 µg per lane.

### Secondary

**All lanes :** Goat polyclonal to Rabbit IgG – H&L – Pre-Adsorbed (HRP) at 1/6000 dilution

Developed using the ECL technique.

Performed under reducing conditions.

**Predicted band size:** 17 kDa

**Observed band size:** 17 kDa

**Exposure time:** 5 minutes



Western blot - Anti-Rad6 antibody (ab31917)

**All lanes :** Anti-Rad6 antibody (ab31917) at 1 µg/ml

**Lane 1 :** Testis (Mouse) Tissue Lysate

**Lane 2 :** Testis (Rat) Tissue Lysate - normal tissue ([ab29388](#))

Lysates/proteins at 10 µg per lane.

**Secondary**

**All lanes :** Goat Anti-Rabbit IgG H&L (HRP) preadsorbed ([ab97080](#)) at 1/5000 dilution

Developed using the ECL technique.

Performed under reducing conditions.

**Predicted band size:** 17 kDa

**Observed band size:** 17 kDa

**Exposure time:** 3 minutes

**Please note:** All products are "FOR RESEARCH USE ONLY. NOT FOR USE IN DIAGNOSTIC PROCEDURES"

**Our Abpromise to you: Quality guaranteed and expert technical support**

- Replacement or refund for products not performing as stated on the datasheet
- Valid for 12 months from date of delivery
- Response to your inquiry within 24 hours
- We provide support in Chinese, English, French, German, Japanese and Spanish
- Extensive multi-media technical resources to help you
- We investigate all quality concerns to ensure our products perform to the highest standards

If the product does not perform as described on this datasheet, we will offer a refund or replacement. For full details of the Abpromise, please visit <https://www.abcam.com/abpromise> or contact our technical team.

**Terms and conditions**

- Guarantee only valid for products bought direct from Abcam or one of our authorized distributors