



Product datasheet

Anti-RAP1GAP antibody ab244259

9 Images

Overview

Product name	Anti-RAP1GAP antibody
Description	Rabbit polyclonal to RAP1GAP
Host species	Rabbit
Tested applications	Suitable for: IHC-P
Species reactivity	Reacts with: Mouse, Human
Immunogen	<p>Recombinant fragment corresponding to Human RAP1GAP aa 501-601. Sequence:</p> <p>IGIENIQEVQEKRESPPAGQKTPDSGHVSQEPKSENSSTQ SSPEMPTTKN RAETAAQRAEALKDFSRSSSSASSFASVVEETEGVDGE DTGLESVSSSGT P</p> <p>Database link: P47736</p> <p style="text-align: right;">  Run BLAST with  Run BLAST with </p>
Positive control	IHC-P: Mouse hippocampus, globus pallidus, hypothalamus, cingulate cortex and midbrain tissue. Human kidney, cerebellum, cerebral cortex and hippocampus tissue.
General notes	<p>Reproducibility is key to advancing scientific discovery and accelerating scientists' next breakthrough.</p> <p>Abcam is leading the way with our range of recombinant antibodies, knockout-validated antibodies and knockout cell lines, all of which support improved reproducibility.</p> <p>We are also planning to innovate the way in which we present recommended applications and species on our product datasheets, so that only applications & species that have been tested in our own labs, our suppliers or by selected trusted collaborators are covered by our Abpromise™ guarantee.</p> <p>In preparation for this, we have started to update the applications & species that this product is Abpromise guaranteed for.</p> <p>We are also updating the applications & species that this product has been “predicted to work with,” however this information is not covered by our Abpromise guarantee.</p> <p>Applications & species from publications and Abreviews that have not been tested in our own labs or in those of our suppliers are not covered by the Abpromise guarantee.</p> <p>Please check that this product meets your needs before purchasing. If you have any questions, special requirements or concerns, please send us an inquiry and/or contact our Support team</p>

ahead of purchase. Recommended alternatives for this product can be found below, as well as customer reviews and Q&As.

Properties

Form	Liquid
Storage instructions	Shipped at 4°C. Store at +4°C short term (1-2 weeks). Upon delivery aliquot. Store at -20°C long term. Avoid freeze / thaw cycle.
Storage buffer	pH: 7.20 Preservative: 0.02% Sodium azide Constituents: PBS, 40% Glycerol (glycerin, glycerine)
Purity	Immunogen affinity purified
Clonality	Polyclonal
Isotype	IgG

Applications

Our [Abpromise guarantee](#) covers the use of **ab244259** in the following tested applications.

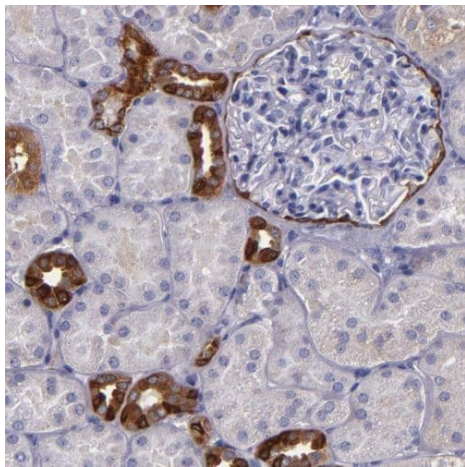
The application notes include recommended starting dilutions; optimal dilutions/concentrations should be determined by the end user.

Application	Abreviews	Notes
IHC-P		1/200 - 1/500. Perform heat mediated antigen retrieval with citrate buffer pH 6 before commencing with IHC staining protocol.

Target

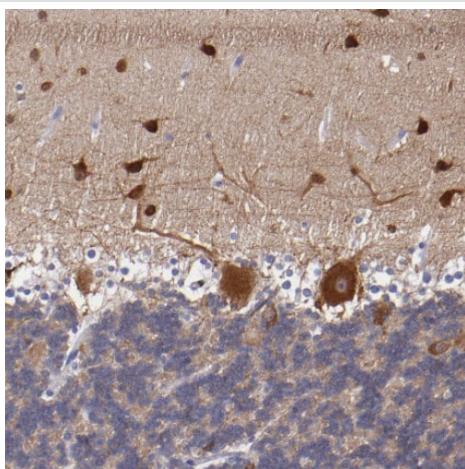
Function	GTPase activator for the nuclear Ras-related regulatory protein RAP-1A (KREV-1), converting it to the putatively inactive GDP-bound state.
Tissue specificity	Significant expression seen in the brain, kidney and pancreas. Abundant in the cerebral cortex and expressed at much lower levels in the spinal cord. Not detected in the lymphoid tissues.
Sequence similarities	Contains 1 GoLoco domain. Contains 1 Rap-GAP domain.
Cellular localization	Golgi apparatus membrane.

Images



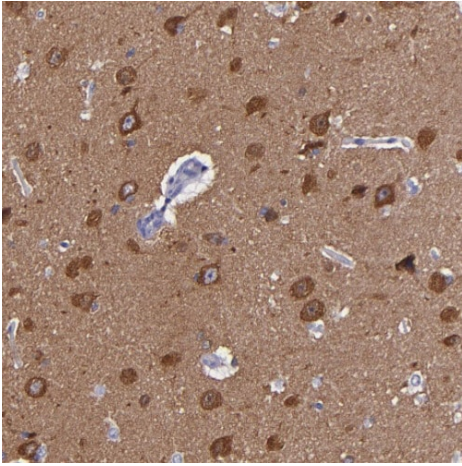
Formalin-fixed, paraffin-embedded human kidney tissue stained for RAP1GAP with ab244259 at a 1/50 dilution in immunohistochemical analysis.

Immunohistochemistry (Formalin/PFA-fixed paraffin-embedded sections) - Anti-RAP1GAP antibody (ab244259)



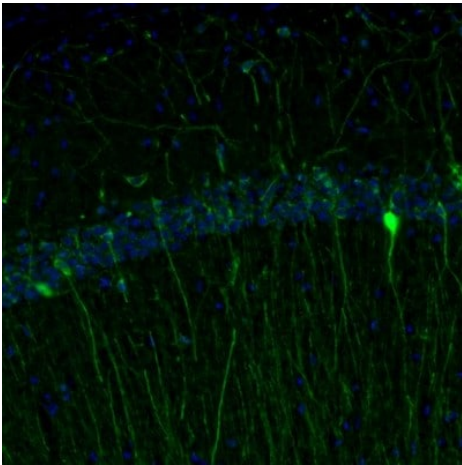
Formalin-fixed, paraffin-embedded human cerebellum tissue stained for RAP1GAP with ab244259 at a 1/200 dilution in immunohistochemical analysis.

Immunohistochemistry (Formalin/PFA-fixed paraffin-embedded sections) - Anti-RAP1GAP antibody (ab244259)



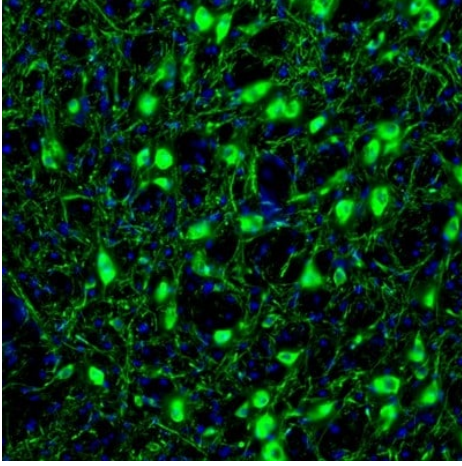
Formalin-fixed, paraffin-embedded human cerebral cortex tissue stained for RAP1GAP with ab244259 at a 1/200 dilution in immunohistochemical analysis.

Immunohistochemistry (Formalin/PFA-fixed paraffin-embedded sections) - Anti-RAP1GAP antibody (ab244259)



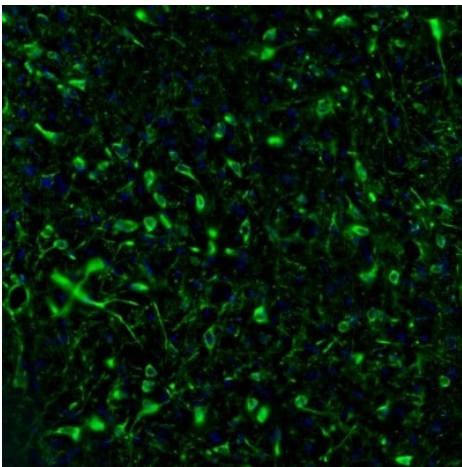
Formalin-fixed, paraffin-embedded mouse hippocampus tissue stained for RAP1GAP with ab244259 at a 1/200 dilution in immunohistochemical analysis.

Immunohistochemistry (Formalin/PFA-fixed paraffin-embedded sections) - Anti-RAP1GAP antibody (ab244259)



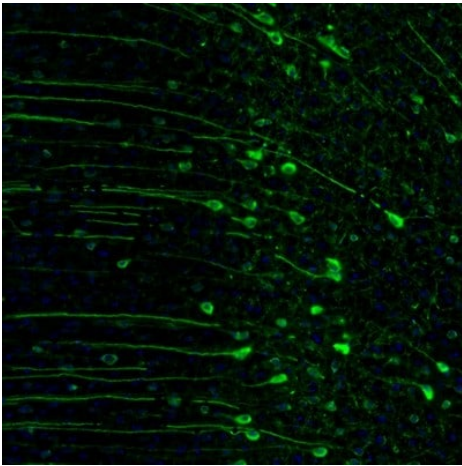
Formalin-fixed, paraffin-embedded mouse globus pallidus tissue stained for RAP1GAP with ab244259 at a 1/200 dilution in immunohistochemical analysis.

Immunohistochemistry (Formalin/PFA-fixed paraffin-embedded sections) - Anti-RAP1GAP antibody (ab244259)



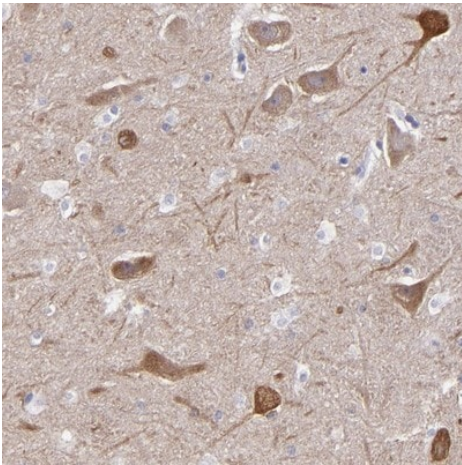
Formalin-fixed, paraffin-embedded mouse hypothalamus tissue stained for RAP1GAP with ab244259 at a 1/200 dilution in immunohistochemical analysis.

Immunohistochemistry (Formalin/PFA-fixed paraffin-embedded sections) - Anti-RAP1GAP antibody (ab244259)



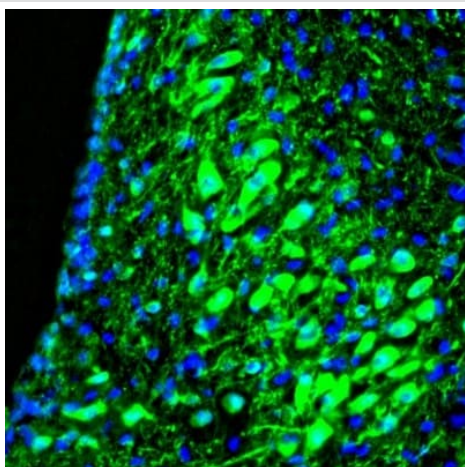
Formalin-fixed, paraffin-embedded mouse cingulate cortex tissue stained for RAP1GAP with ab244259 at a 1/200 dilution in immunohistochemical analysis.

Immunohistochemistry (Formalin/PFA-fixed paraffin-embedded sections) - Anti-RAP1GAP antibody (ab244259)



Formalin-fixed, paraffin-embedded human hippocampus tissue stained for RAP1GAP with ab244259 at a 1/200 dilution in immunohistochemical analysis.

Immunohistochemistry (Formalin/PFA-fixed paraffin-embedded sections) - Anti-RAP1GAP antibody (ab244259)



Formalin-fixed, paraffin-embedded mouse midbrain tissue stained for RAP1GAP with ab244259 at a 1/200 dilution in immunohistochemical analysis.

Immunohistochemistry (Formalin/PFA-fixed paraffin-embedded sections) - Anti-RAP1GAP antibody (ab244259)

Please note: All products are "FOR RESEARCH USE ONLY. NOT FOR USE IN DIAGNOSTIC PROCEDURES"

Our Abpromise to you: Quality guaranteed and expert technical support

- Replacement or refund for products not performing as stated on the datasheet
- Valid for 12 months from date of delivery
- Response to your inquiry within 24 hours
- We provide support in Chinese, English, French, German, Japanese and Spanish
- Extensive multi-media technical resources to help you
- We investigate all quality concerns to ensure our products perform to the highest standards

If the product does not perform as described on this datasheet, we will offer a refund or replacement. For full details of the Abpromise, please visit <https://www.abcam.com/abpromise> or contact our technical team.

Terms and conditions

- Guarantee only valid for products bought direct from Abcam or one of our authorized distributors