

Product datasheet

Anti-RAPH1 antibody ab121619

2 Images

Overview

---

<b>Product name</b>	Anti-RAPH1 antibody
<b>Description</b>	Rabbit polyclonal to RAPH1
<b>Host species</b>	Rabbit
<b>Tested applications</b>	<b>Suitable for:</b> ICC/IF, IHC-P
<b>Species reactivity</b>	<b>Reacts with:</b> Human
<b>Immunogen</b>	Recombinant fragment, corresponding to C terminal amino acids 1105-1248 of Human RAPH1.
<b>Positive control</b>	Human duodenum tissue.
<b>General notes</b>	<p>Reproducibility is key to advancing scientific discovery and accelerating scientists' next breakthrough.</p> <p>Abcam is leading the way with our range of recombinant antibodies, knockout-validated antibodies and knockout cell lines, all of which support improved reproducibility.</p> <p>We are also planning to innovate the way in which we present recommended applications and species on our product datasheets, so that only applications &amp; species that have been tested in our own labs, our suppliers or by selected trusted collaborators are covered by our Abpromise™ guarantee.</p> <p>In preparation for this, we have started to update the applications &amp; species that this product is Abpromise guaranteed for.</p> <p>We are also updating the applications &amp; species that this product has been “predicted to work with,” however this information is not covered by our Abpromise guarantee.</p> <p>Applications &amp; species from publications and Abreviews that have not been tested in our own labs or in those of our suppliers are not covered by the Abpromise guarantee.</p> <p>Please check that this product meets your needs before purchasing. If you have any questions, special requirements or concerns, please send us an inquiry and/or contact our Support team ahead of purchase. Recommended alternatives for this product can be found below, as well as customer reviews and Q&amp;As.</p>

Properties

---

<b>Form</b>	Liquid
<b>Storage instructions</b>	Shipped at 4°C. Upon delivery aliquot and store at -20°C. Avoid repeated freeze / thaw cycles.

<b>Storage buffer</b>	pH: 7.20 Preservative: 0.02% Sodium azide Constituents: 40% Glycerol (glycerin, glycerine), 59% PBS
<b>Purity</b>	Immunogen affinity purified
<b>Clonality</b>	Polyclonal
<b>Isotype</b>	IgG

## Applications

Our [Abpromise guarantee](#) covers the use of **ab121619** in the following tested applications.

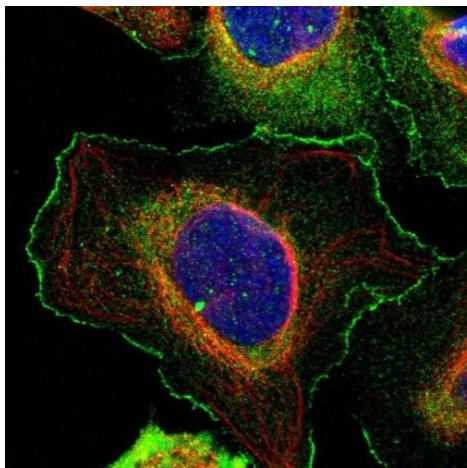
The application notes include recommended starting dilutions; optimal dilutions/concentrations should be determined by the end user.

Application	Abreviews	Notes
ICC/IF		Use a concentration of 1 - 4 µg/ml. Recommend PFA Fixation and Triton X-100 treatment
IHC-P		1/50 - 1/200. Perform heat mediated antigen retrieval with citrate buffer pH 6 before commencing with IHC staining protocol. pH 6

## Target

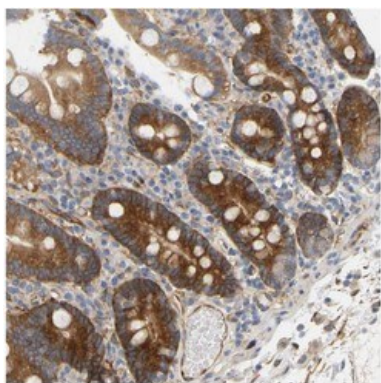
<b>Function</b>	Mediator of localized membrane signals. Implicated in the regulation of lamellipodial dynamics. Negatively regulates cell adhesion.
<b>Tissue specificity</b>	Isoform RMO1-RAPH1 is ubiquitously expressed with highest levels in brain, heart, ovary and developing embryo. Isoform RMO1 is widely expressed with highest levels in liver. Low expression in B-cells.
<b>Sequence similarities</b>	Belongs to the MRL family. Contains 1 PH domain. Contains 1 Ras-associating domain.
<b>Cellular localization</b>	Cell membrane. Cell projection > lamellipodium. Cell projection > filopodium. Cytoplasm > cytoskeleton. Recruited to the membrane, via the PH domain, by the phosphoinositide, PI(3,4)P2. Colocalizes with ENAH/VASP at the tips of lamellipodia and filopodia. Also colocalizes with the pathogens, Vaccinia and Enteropathogenic E.coli (EPEC) at the interface between the pathogen and their actin.

## Images



Immunocytochemistry/ Immunofluorescence - Anti-RAPH1 antibody (ab121619)

Immunofluorescent staining of Human cell line U-2 OS shows positivity in nucleus, plasma membrane and cytoplasm. Recommended concentration of ab121619 1-4  $\mu\text{g/ml}$ . Cells treated with PFA/Triton X-100.



Immunohistochemistry (Formalin/PFA-fixed paraffin-embedded sections) - Anti-RAPH1 antibody (ab121619)

ab121619 at 1/75 staining RALPH1 in Paraffin Embedded Human duodenum tissue. Note strong cytoplasmic positivity in glandular cells.

**Please note:** All products are "FOR RESEARCH USE ONLY. NOT FOR USE IN DIAGNOSTIC PROCEDURES"

#### **Our Abpromise to you: Quality guaranteed and expert technical support**

- Replacement or refund for products not performing as stated on the datasheet
- Valid for 12 months from date of delivery
- Response to your inquiry within 24 hours

- We provide support in Chinese, English, French, German, Japanese and Spanish
- Extensive multi-media technical resources to help you
- We investigate all quality concerns to ensure our products perform to the highest standards

If the product does not perform as described on this datasheet, we will offer a refund or replacement. For full details of the Abpromise, please visit <https://www.abcam.com/abpromise> or contact our technical team.

### **Terms and conditions**

---

- Guarantee only valid for products bought direct from Abcam or one of our authorized distributors