

Product datasheet

Anti-RASA4 antibody ab151232

2 Images

Overview

Product name	Anti-RASA4 antibody
Description	Rabbit polyclonal to RASA4
Host species	Rabbit
Tested applications	Suitable for: WB, ICC/IF
Species reactivity	Reacts with: Human
Immunogen	Recombinant fragment, corresponding to a region within amino acids 20-803 of Human RASA4.
Positive control	293T, A431 and HeLa cell lysates; HeLa cells.
General notes	<p>The Life Science industry has been in the grips of a reproducibility crisis for a number of years. Abcam is leading the way in addressing this with our range of recombinant monoclonal antibodies and knockout edited cell lines for gold-standard validation. Please check that this product meets your needs before purchasing.</p> <p>If you have any questions, special requirements or concerns, please send us an inquiry and/or contact our Support team ahead of purchase. Recommended alternatives for this product can be found below, along with publications, customer reviews and Q&As</p>

Properties

Form	Liquid
Storage instructions	Shipped at 4°C. Upon delivery aliquot. Store at -20°C or -80°C. Avoid freeze / thaw cycle.
Storage buffer	pH: 7.00 Preservative: 0.01% Thimerosal (merthiolate) Constituents: 1.21% Tris, 0.75% Glycine, 20% Glycerol (glycerin, glycerine)
Purity	Immunogen affinity purified
Clonality	Polyclonal
Isotype	IgG

Applications

The Abpromise guarantee Our [Abpromise guarantee](#) covers the use of ab151232 in the following tested applications. The application notes include recommended starting dilutions; optimal dilutions/concentrations should be determined by the end user.

Application	Abreviews	Notes
WB		1/500 - 1/3000. Predicted molecular weight: 90 kDa.
ICC/IF		1/100 - 1/1000.

Target

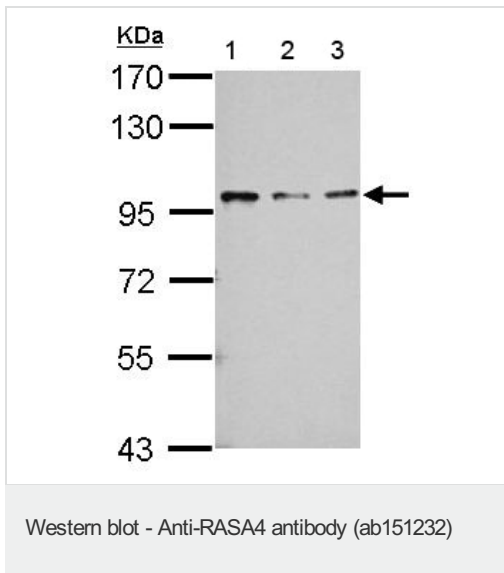
Relevance

RASA4 is a Ca²⁺-dependent Ras GTPase-activating protein, that switches off the Ras-MAPK pathway following a stimulus that elevates intracellular calcium.

Cellular localization

Cytoplasm; cytosol. Cell membrane; peripheral membrane protein. Note=Localized to the cytosol as a result of its lack of phosphoinositide binding activity. Upon agonist-stimulated calcium mobilization, utilizes the C2A and C2B domains to associate with the plasma membrane.

Images



All lanes : Anti-RASA4 antibody (ab151232) at 1/3000 dilution

Lane 1 : 293T whole cell lysate

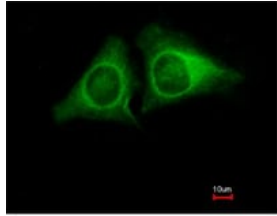
Lane 2 : A431 whole cell lysate

Lane 3 : HeLa whole cell lysate

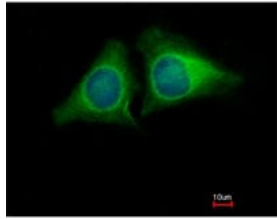
Lysates/proteins at 30 µg per lane.

Predicted band size: 90 kDa

7.5% SDS PAGE



Immunofluorescent analysis of methanol-fixed HeLa cells labeling RASA4 with ab151232 at 1/500 dilution.



Immunocytochemistry/ Immunofluorescence - Anti-RASA4 antibody (ab151232)

Please note: All products are "FOR RESEARCH USE ONLY. NOT FOR USE IN DIAGNOSTIC PROCEDURES"

Our Abpromise to you: Quality guaranteed and expert technical support

- Replacement or refund for products not performing as stated on the datasheet
- Valid for 12 months from date of delivery
- Response to your inquiry within 24 hours
- We provide support in Chinese, English, French, German, Japanese and Spanish
- Extensive multi-media technical resources to help you
- We investigate all quality concerns to ensure our products perform to the highest standards

If the product does not perform as described on this datasheet, we will offer a refund or replacement. For full details of the Abpromise, please visit <https://www.abcam.com/abpromise> or contact our technical team.

Terms and conditions

- Guarantee only valid for products bought direct from Abcam or one of our authorized distributors