

## Product datasheet

# Rat Fibronectin ELISA Kit ab108850

[1 References](#) [2 Images](#)

### Overview

**Product name** Rat Fibronectin ELISA Kit

**Detection method** Colorimetric

**Precision**

Intra-assay

Sample	n	Mean	SD	CV%
Overall				4.6%

Inter-assay

Sample	n	Mean	SD	CV%
Overall				8.7%

**Sample type** Cell culture supernatant, Urine, Serum, Plasma

**Assay type** Sandwich (quantitative)

**Sensitivity** = 0.09 ng/ml

**Range** 0.098 ng/ml - 100 ng/ml

**Recovery** 96 %

**Assay time** 4h 00m

**Assay duration** Multiple steps standard assay

**Species reactivity** **Reacts with:** Rat

**Product overview**

Abcam's Fibronectin Rat *in vitro* ELISA (Enzyme-Linked Immunosorbent Assay) kit is designed for the quantitative measurement of Fibronectin in plasma, serum, urine, and cell culture supernatants.

A Fibronectin specific antibody has been precoated onto 96-well plates and blocked. Standards or test samples are added to the wells and subsequently a Fibronectin specific biotinylated detection antibody is added and then followed by washing with wash buffer. Streptavidin-Peroxidase Conjugate is added and unbound conjugates are washed away with wash buffer. TMB is then used to visualize Streptavidin-Peroxidase enzymatic reaction. TMB is catalyzed by Streptavidin-Peroxidase to produce a blue color product that changes into yellow after adding acidic stop solution. The density of yellow coloration is directly proportional to the amount of Fibronectin captured in plate.

**The entire kit may be stored at -20°C for long term storage before reconstitution - Avoid repeated freeze-thaw cycles.**

**Tested applications**                      **Suitable for:** Sandwich ELISA  
**Platform**                                      Microplate

**Properties**

**Storage instructions**                      Store at -20°C. Please refer to protocols.

Components	1 x 96 tests
100X Streptavidin-Peroxidase Conjugate	1 x 80µl
10X Diluent N Concentrate	1 x 30ml
20X Wash Buffer Concentrate	2 x 30ml
50X Biotinylated Rat Fibronectin Antibody	1 x 120µl
Chromogen Substrate	1 x 8ml
Rat Fibronectin Microplate (12 x 8 well strips)	1 unit
Rat Fibronectin Standard	1 vial
Sealing Tapes	3 units
Stop Solution	1 x 12ml

**Function**                                      Fibronectins bind cell surfaces and various compounds including collagen, fibrin, heparin, DNA, and actin. Fibronectins are involved in cell adhesion, cell motility, opsonization, wound healing, and maintenance of cell shape. Involved in osteoblast compaction through the fibronectin fibrillogenesis cell-mediated matrix assembly process, essential for osteoblast mineralization. Participates in the regulation of type I collagen deposition by osteoblasts. Anastellin binds fibronectin and induces fibril formation. This fibronectin polymer, named superfibronectin, exhibits enhanced adhesive properties. Both anastellin and superfibronectin inhibit tumor growth, angiogenesis and metastasis. Anastellin activates p38 MAPK and inhibits lysophospholipid signaling.

**Tissue specificity**                              Plasma FN (soluble dimeric form) is secreted by hepatocytes. Cellular FN (dimeric or cross-linked multimeric forms), made by fibroblasts, epithelial and other cell types, is deposited as fibrils in the extracellular matrix. Ugl-Y1, Ugl-Y2 and Ugl-Y3 are found in urine.

**Involvement in disease**                      Glomerulopathy with fibronectin deposits 2

**Sequence similarities**                              Contains 12 fibronectin type-I domains.  
 Contains 2 fibronectin type-II domains.  
 Contains 16 fibronectin type-III domains.

**Developmental stage**                              Ugl-Y1, Ugl-Y2 and Ugl-Y3 are present in the urine from 0 to 17 years of age.

**Post-translational modifications**                      Sulfated.  
 It is not known whether both or only one of Thr-2064 and Thr-2065 are/is glycosylated.

Forms covalent cross-links mediated by a transglutaminase, such as F13A or TGM2, between a glutamine and the epsilon-amino group of a lysine residue, forming homopolymers and heteropolymers (e.g. fibrinogen-fibronectin, collagen-fibronectin heteropolymers).  
 Phosphorylated by FAM20C in the extracellular medium.  
 Proteolytic processing produces the C-terminal NC1 peptide, anastellin.

**Cellular localization**

Secreted, extracellular space, extracellular matrix.

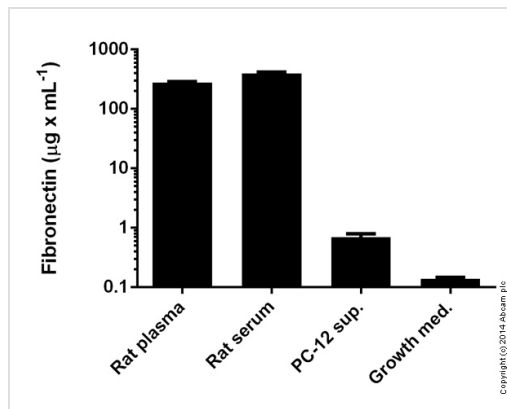
**Applications**

Our [Abpromise guarantee](#) covers the use of **ab108850** in the following tested applications.

The application notes include recommended starting dilutions; optimal dilutions/concentrations should be determined by the end user.

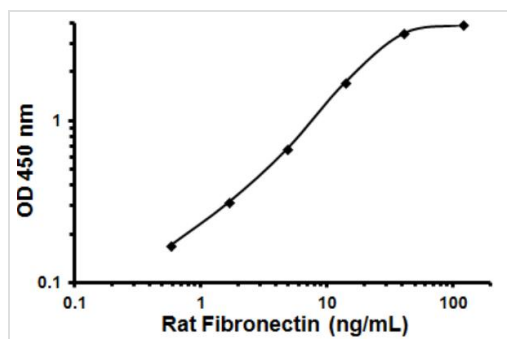
Application	Abreviews	Notes
Sandwich ELISA		Use at an assay dependent concentration.

**Images**



Fibronectin measured in various samples showing quantity (microgram) per mL of tested sample

Sandwich ELISA - Ab108850 Fibronectin Rat ELISA Kit



Representative Standard Curve using ab108850

Typical Standard Curve

**Please note:** All products are "FOR RESEARCH USE ONLY. NOT FOR USE IN DIAGNOSTIC PROCEDURES"

## **Our Abpromise to you: Quality guaranteed and expert technical support**

---

- Replacement or refund for products not performing as stated on the datasheet
- Valid for 12 months from date of delivery
- Response to your inquiry within 24 hours
  
- We provide support in Chinese, English, French, German, Japanese and Spanish
- Extensive multi-media technical resources to help you
- We investigate all quality concerns to ensure our products perform to the highest standards

If the product does not perform as described on this datasheet, we will offer a refund or replacement. For full details of the Abpromise, please visit <https://www.abcam.com/abpromise> or contact our technical team.

## **Terms and conditions**

---

- Guarantee only valid for products bought direct from Abcam or one of our authorized distributors