

Product datasheet

# Rat IgG1, kappa monoclonal [RTK2071] - Isotype control ab18412

[3 References](#) [1 Image](#)

Overview

---

<b>Product name</b>	Rat IgG1, kappa monoclonal [RTK2071] - Isotype control
<b>Tested applications</b>	<b>Suitable for:</b> Flow Cyt
<b>Immunogen</b>	Chemical/ Small Molecule (Trinitrophenol) conjugated to KLH.
<b>General notes</b>	<p>The ab18412, RTK2071 immunoglobulin reacts with KLH and was chosen as an isotype control after screening on a variety of resting, activated, live, and fixed mouse and human tissues.</p> <p>The Life Science industry has been in the grips of a reproducibility crisis for a number of years. Abcam is leading the way in addressing this with our range of recombinant monoclonal antibodies and knockout edited cell lines for gold-standard validation. Please check that this product meets your needs before purchasing.</p> <p>If you have any questions, special requirements or concerns, please send us an inquiry and/or contact our Support team ahead of purchase. Recommended alternatives for this product can be found below, along with publications, customer reviews and Q&amp;As</p>

Properties

---

<b>Form</b>	Liquid
<b>Storage instructions</b>	Shipped at 4°C. Store at +4°C.
<b>Storage buffer</b>	<p>pH: 7.20</p> <p>Preservative: 0.09% Sodium azide</p> <p>Constituent: PBS</p>
<b>Purity</b>	Protein A purified
<b>Isotype control notes</b>	The ab18412, RTK2071 immunoglobulin reacts with KLH and was chosen as an isotype control after screening on a variety of resting, activated, live, and fixed mouse and human tissues.
<b>Clonality</b>	Monoclonal
<b>Clone number</b>	RTK2071
<b>Isotype</b>	IgG1
<b>Light chain type</b>	kappa

## Applications

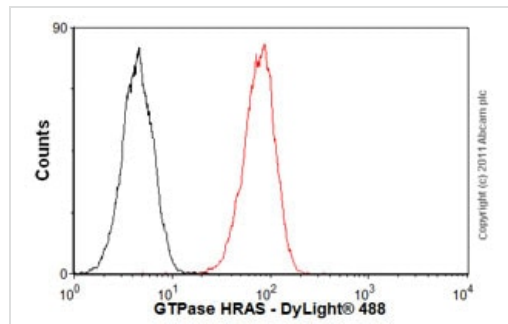
### The Abpromise guarantee

Our **Abpromise guarantee** covers the use of ab18412 in the following tested applications.

The application notes include recommended starting dilutions; optimal dilutions/concentrations should be determined by the end user.

Application	Abreviews	Notes
Flow Cyt		Use 1 µg for 10 <sup>6</sup> cells.

## Images



Flow Cytometry - Rat IgG1, kappa monoclonal [RTK2071] - Isotype control (ab18412)

Overlay histogram showing HeLa cells stained with **ab16881** (red line). The cells were fixed with 80% methanol (5 min) and incubated in 1x PBS / 10% normal goat serum / 0.3M glycine to block non-specific protein-protein interactions. The cells were then incubated with the antibody (**ab16881**, 1 µg/1x10<sup>6</sup> cells) for 30 min at 22°C. The secondary antibody used was DyLight<sup>®</sup> 488 goat anti-rat IgG (H+L) (**ab98386**) at 1/500 dilution for 30 min at 22°C. Isotype control antibody (black line) was rat IgG1 [RTK2071] (ab18412, 2 µg/1x10<sup>6</sup> cells) used under the same conditions. Acquisition of >5,000 events was performed. This antibody gave a positive signal in HeLa cells fixed with 4% paraformaldehyde (10 min) used under the same conditions.

Please note that Abcam do not have any data for use of this antibody on non-fixed cells. We welcome any customer feedback.

**Please note:** All products are "FOR RESEARCH USE ONLY. NOT FOR USE IN DIAGNOSTIC PROCEDURES"

## Our Abpromise to you: Quality guaranteed and expert technical support

- Replacement or refund for products not performing as stated on the datasheet
- Valid for 12 months from date of delivery
- Response to your inquiry within 24 hours
- We provide support in Chinese, English, French, German, Japanese and Spanish
- Extensive multi-media technical resources to help you
- We investigate all quality concerns to ensure our products perform to the highest standards

If the product does not perform as described on this datasheet, we will offer a refund or replacement. For full details of the Abpromise, please visit <https://www.abcam.com/abpromise> or contact our technical team.

## Terms and conditions

- Guarantee only valid for products bought direct from Abcam or one of our authorized distributors