

Product datasheet

Rat IgM, kappa monoclonal [RTK2118] - Isotype Control ab35768

[2 References](#) [1 Image](#)

Overview

Product name	Rat IgM, kappa monoclonal [RTK2118] - Isotype Control
Tested applications	Suitable for: Flow Cyt, WB, IP, ICC/IF, IHC-Fr, IHC-P
Immunogen	Other Immunogen Type corresponding to Rat. Trinitrophenol + KLH
General notes	

Isotype Control monoclonal antibodies are used to estimate the non-specific binding of target primary antibodies to cell surface antigens. Non-specific binding is due to Fc receptor binding or other protein-protein interactions. Isotype controls show negligible cross-reactivity with cell surface antigens on tissue sections or in cellular preparations. Isotype Controls should be used at identical concentrations and staining conditions as the target primary antibodies.

The Life Science industry has been in the grips of a reproducibility crisis for a number of years. Abcam is leading the way in addressing this with our range of recombinant monoclonal antibodies and knockout edited cell lines for gold-standard validation. Please check that this product meets your needs before purchasing.

If you have any questions, special requirements or concerns, please send us an inquiry and/or contact our Support team ahead of purchase. Recommended alternatives for this product can be found below, along with publications, customer reviews and Q&As

Properties

Form	Liquid
Storage instructions	Shipped at 4°C. Store at +4°C.
Storage buffer	pH: 7.20 Preservative: 0.09% Sodium azide Constituent: PBS
Purity	Purified IgM
Isotype control notes	Isotype Control monoclonal antibodies are used to estimate the non-specific binding of target primary antibodies to cell surface antigens. Non-specific binding is due to Fc receptor binding or other protein-protein interactions. Isotype controls show negligible cross-reactivity with cell surface antigens on tissue sections or in cellular preparations. Isotype Controls should be used at identical concentrations and staining conditions as the target primary antibodies.

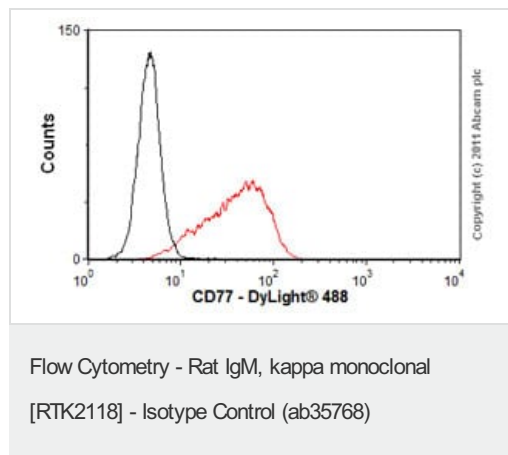
Clonality	Monoclonal
Clone number	RTK2118
Isotype	IgM
Light chain type	kappa

Applications

The Abpromise guarantee Our [Abpromise guarantee](#) covers the use of ab35768 in the following tested applications. The application notes include recommended starting dilutions; optimal dilutions/concentrations should be determined by the end user.

Application	Abreviews	Notes
Flow Cyt		Use 2µg for 10 ⁶ cells. ab35768 is a negative isotype control
WB		Use at an assay dependent dilution.
IP		Use at an assay dependent dilution.
ICC/IF		Use at an assay dependent dilution.
IHC-Fr		Use at an assay dependent dilution.
IHC-P		Use at an assay dependent dilution.

Images



Overlay histogram showing RAMOS cells stained with [ab19795](#) (red line). The cells were fixed with 4% paraformaldehyde (10 min) and then incubated in 1x PBS / 10% normal goat serum / 0.3M glycine to block non-specific protein-protein interactions. The cells were then incubated with the antibody ([ab19795](#), 1/10 dilution) for 30 min at 22°C. The secondary antibody used was DyLight[®] 488 goat anti-rat IgG (H+L) ([ab98386](#)) at 1/500 dilution for 30 min at 22°C. Isotype control antibody (black line) was rat kappa monoclonal [RTK2118] ([ab35768](#), 2µg/1x10⁶ cells) used under the same conditions. Acquisition of >5,000 events was performed. Please note that Abcam do not have any data for use of this antibody on non-fixed cells. We welcome any customer feedback.

Please note: All products are "FOR RESEARCH USE ONLY. NOT FOR USE IN DIAGNOSTIC PROCEDURES"

Our Abpromise to you: Quality guaranteed and expert technical support

- Replacement or refund for products not performing as stated on the datasheet

- Valid for 12 months from date of delivery
- Response to your inquiry within 24 hours

- We provide support in Chinese, English, French, German, Japanese and Spanish
- Extensive multi-media technical resources to help you
- We investigate all quality concerns to ensure our products perform to the highest standards

If the product does not perform as described on this datasheet, we will offer a refund or replacement. For full details of the Abpromise, please visit <https://www.abcam.com/abpromise> or contact our technical team.

Terms and conditions

- Guarantee only valid for products bought direct from Abcam or one of our authorized distributors