

Product datasheet

Rat MCP1 Matched Antibody Pair Kit ab221434

1 Image

Overview

Product name	Rat MCP1 Matched Antibody Pair Kit
Detection method	Colorimetric
Assay type	ELISA set
Range	3.9 pg/ml - 250 pg/ml
Species reactivity	Reacts with: Rat
Product overview	Matched Antibody Pair Kits include a capture and a biotinylated detector antibody pair, along with a calibrated protein standard, suitable for sandwich ELISA. The Matched Antibody Pair Kit can be used to quantify native and recombinant rat MCP1.

Matched antibody pair kits and reagents deliver consistent, specific, and sensitive results.

Batch-to-batch consistency: only recombinant monoclonal antibodies are used in our matched antibody pairs.

Specificity: antibody pairs are screened in plasma and serum to ensure specificity in complex samples.

Sensitivity: benchmarked against commercially available antibody pairs to ensure equivalent or superior performance compared with the competition.

Additional buffers and plates are required for the assay. An accessory pack can be purchased which includes buffer reagents required to perform 10 x 96-well plate sandwich ELISAs ([ab210905](#)).

For additional information on the performance of the antibody pair used in this kit, please see our equivalent SimpleStep ELISA® ([ab219045](#)) which uses the same antibody pair.

To receive an electronic copy of the Certificate of Analysis, please send an [email](#) with "CoA for matched antibody pair kit" in the subject line and the desired product number and lot number in the body of the email.

Tested applications	Suitable for: ELISA
Platform	Reagents

Properties

Storage instructions Store at -20°C. Please refer to protocols.

Components	10 x 96 tests	2 x 96 tests
Rat MCP1 Capture Antibody	1 x 100µg	1 x 20µg
Rat MCP1 Detector Antibody	1 x 25µg	1 x 5µg
Rat MCP1 Lyophilized Protein	1 vial	1 vial

Function Chemotactic factor that attracts monocytes and basophils but not neutrophils or eosinophils. Augments monocyte anti-tumor activity. Has been implicated in the pathogenesis of diseases characterized by monocytic infiltrates, like psoriasis, rheumatoid arthritis or atherosclerosis. May be involved in the recruitment of monocytes into the arterial wall during the disease process of atherosclerosis.

Sequence similarities Belongs to the intercrine beta (chemokine CC) family.

Post-translational modifications Processing at the N-terminus can regulate receptor and target cell selectivity. Deletion of the N-terminal residue converts it from an activator of basophil to an eosinophil chemoattractant.

Cellular localization Secreted.

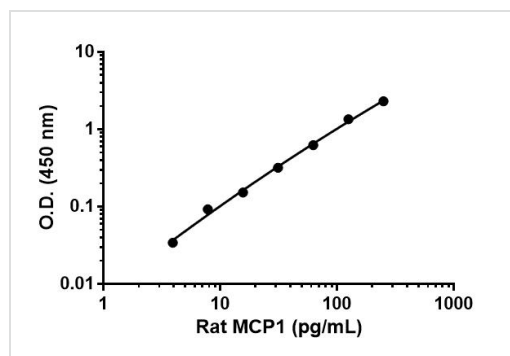
Applications

Our [Abpromise guarantee](#) covers the use of **ab221434** in the following tested applications.

The application notes include recommended starting dilutions; optimal dilutions/concentrations should be determined by the end user.

Application	Abreviews	Notes
ELISA		Use at an assay dependent concentration.

Images



Rat MCP1 standard curve

Standard calibration curve. Background subtracted values are graphed.

Please note: All products are "FOR RESEARCH USE ONLY. NOT FOR USE IN DIAGNOSTIC PROCEDURES"

Our Abpromise to you: Quality guaranteed and expert technical support

- Replacement or refund for products not performing as stated on the datasheet
- Valid for 12 months from date of delivery
- Response to your inquiry within 24 hours

- We provide support in Chinese, English, French, German, Japanese and Spanish
- Extensive multi-media technical resources to help you
- We investigate all quality concerns to ensure our products perform to the highest standards

If the product does not perform as described on this datasheet, we will offer a refund or replacement. For full details of the Abpromise, please visit <https://www.abcam.com/abpromise> or contact our technical team.

Terms and conditions

- Guarantee only valid for products bought direct from Abcam or one of our authorized distributors