



## Product datasheet

# Anti-RBED1/ELMOD3 antibody ab237508

4 Images

### Overview

<b>Product name</b>	Anti-RBED1/ELMOD3 antibody
<b>Description</b>	Rabbit polyclonal to RBED1/ELMOD3
<b>Host species</b>	Rabbit
<b>Tested applications</b>	<b>Suitable for:</b> ICC/IF, IHC-P, WB
<b>Species reactivity</b>	<b>Reacts with:</b> Human
<b>Immunogen</b>	Recombinant fragment corresponding to Human RBED1/ELMOD3 aa 1-102. Sequence:  MNEKSCSFHSKEELRDGQGERLSAGYSPSYDKDKSVLA FRGIPELKNH GILQALTTEAYEWEPVVSTEVVRAQEEWEAVDTIQPETG SQASSEQPGQ LI  Database link: <a href="#">Q96FG2</a>  <a href="#">Run BLAST with</a>  <a href="#">Run BLAST with</a>
<b>Positive control</b>	WB: A549 whole cell lysate. IHC-P: Human lung and pancreas tissue. ICC/IF: HepG2 cells.
<b>General notes</b>	This product was previously labelled as RBED1

Reproducibility is key to advancing scientific discovery and accelerating scientists' next breakthrough.

Abcam is leading the way with our range of recombinant antibodies, knockout-validated antibodies and knockout cell lines, all of which support improved reproducibility.

We are also planning to innovate the way in which we present recommended applications and species on our product datasheets, so that only applications & species that have been tested in our own labs, our suppliers or by selected trusted collaborators are covered by our Abpromise™ guarantee.

In preparation for this, we have started to update the applications & species that this product is Abpromise guaranteed for.

We are also updating the applications & species that this product has been “predicted to work with,” however this information is not covered by our Abpromise guarantee.

Applications & species from publications and Abreviews that have not been tested in our own labs or in those of our suppliers are not covered by the Abpromise guarantee.

Please check that this product meets your needs before purchasing. If you have any questions,

special requirements or concerns, please send us an inquiry and/or contact our Support team ahead of purchase. Recommended alternatives for this product can be found below, as well as customer reviews and Q&As.

## Properties

---

<b>Form</b>	Liquid
<b>Storage instructions</b>	Shipped at 4°C. Store at +4°C short term (1-2 weeks). Upon delivery aliquot. Store at -20°C long term. Avoid freeze / thaw cycle.
<b>Storage buffer</b>	pH: 7.40 Constituents: 50% Glycerol (glycerin, glycerine), PBS, 0.03% Proclin 300
<b>Purity</b>	Protein G purified
<b>Purification notes</b>	Purity greater than 95%.
<b>Clonality</b>	Polyclonal
<b>Isotype</b>	IgG

## Applications

---

Our [Abpromise guarantee](#) covers the use of **ab237508** in the following tested applications.

The application notes include recommended starting dilutions; optimal dilutions/concentrations should be determined by the end user.

Application	Abreviews	Notes
ICC/IF		1/50 - 1/200.
IHC-P		1/500 - 1/1000. Perform heat mediated antigen retrieval with citrate buffer pH 6 before commencing with IHC staining protocol.
WB		1/500 - 1/5000. Predicted molecular weight: 43 kDa.

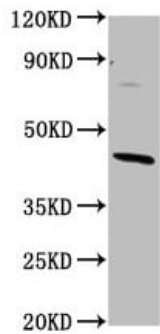
## Target

---

<b>Relevance</b>	RBED1 (RNA binding motif and ELMO domain 1) contains an ELMO domain. There are 6 named isoforms produced by alternative splicing.
------------------	---

## Images

---



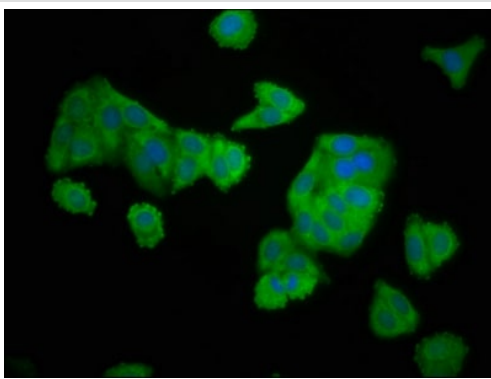
Western blot - Anti-RBED1/ELMOD3 antibody (ab237508)

Anti-RBED1/ELMOD3 antibody (ab237508) at 1/500 dilution + A549 (human lung carcinoma cell line) whole cell lysate

### Secondary

Goat polyclonal to rabbit IgG at 1/50000 dilution

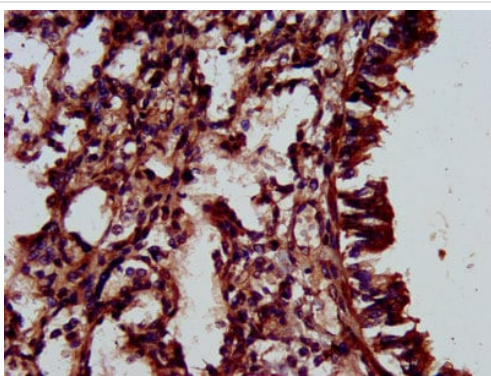
**Predicted band size:** 43 kDa



Immunocytochemistry/ Immunofluorescence - Anti-RBED1/ELMOD3 antibody (ab237508)

HepG2 (human liver hepatocellular carcinoma cell line) cells stained for RBED1/ELMOD3 using ab237508 at 1/166 dilution in ICC/IF.

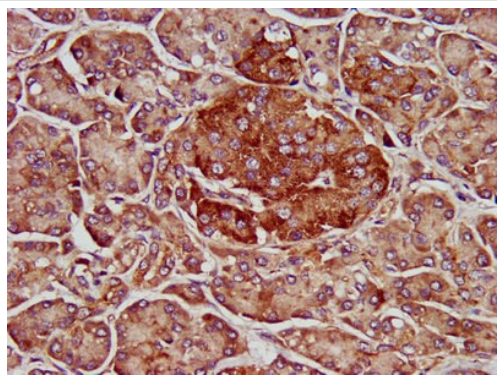
The cells were fixed in 4% formaldehyde, permeabilized using 0.2% Triton X-100 and blocked in 10% normal goat serum. The cells were then incubated with the primary antibody overnight at 4°C. Secondary used is an Alexa-Fluor<sup>®</sup>488-conjugated Goat Anti-Rabbit IgG (H+L). Counterstained with DAPI.



Immunohistochemistry (Formalin/PFA-fixed paraffin-embedded sections) - Anti-RBED1/ELMOD3 antibody (ab237508)

Paraffin-embedded human lung tissue stained for RBED1/ELMOD3 with ab237508 at 1/500 dilution in immunohistochemical analysis.

After dewaxing and hydration, antigen retrieval was mediated by high pressure in a citrate buffer (pH 6.0). Section was blocked with 10% normal goat serum 30 minutes at RT. Then primary antibody (1% BSA) was incubated at 4°C overnight. The primary is detected by a biotinylated secondary antibody and visualized using an HRP conjugated SP system.



Immunohistochemistry (Formalin/PFA-fixed paraffin-embedded sections) - Anti-RBED1/ELMOD3 antibody (ab237508)

Paraffin-embedded human pancreas tissue stained for RBED1/ELMOD3 with ab237508 at 1/500 dilution in immunohistochemical analysis.

After dewaxing and hydration, antigen retrieval was mediated by high pressure in a citrate buffer (pH 6.0). Section was blocked with 10% normal goat serum 30 minutes at RT. Then primary antibody (1% BSA) was incubated at 4°C overnight. The primary is detected by a biotinylated secondary antibody and visualized using an HRP conjugated SP system.

**Please note:** All products are "FOR RESEARCH USE ONLY. NOT FOR USE IN DIAGNOSTIC PROCEDURES"

### Our Abpromise to you: Quality guaranteed and expert technical support

---

- Replacement or refund for products not performing as stated on the datasheet
- Valid for 12 months from date of delivery
- Response to your inquiry within 24 hours
- We provide support in Chinese, English, French, German, Japanese and Spanish
- Extensive multi-media technical resources to help you
- We investigate all quality concerns to ensure our products perform to the highest standards

If the product does not perform as described on this datasheet, we will offer a refund or replacement. For full details of the Abpromise, please visit <https://www.abcam.com/abpromise> or contact our technical team.

### Terms and conditions

---

- Guarantee only valid for products bought direct from Abcam or one of our authorized distributors