



Product datasheet

Anti-Rbm15/OTT antibody ab244374

1 References 7 Images

Overview

<b>Product name</b>	Anti-Rbm15/OTT antibody
<b>Description</b>	Rabbit polyclonal to Rbm15/OTT
<b>Host species</b>	Rabbit
<b>Tested applications</b>	<b>Suitable for:</b> ICC/IF, WB, IHC-P
<b>Species reactivity</b>	<b>Reacts with:</b> Mouse, Rat, Human
<b>Immunogen</b>	Recombinant fragment corresponding to Human Rbm15/OTT aa 264-378. Sequence:  DTYPPSASVVGASVGGHRHPPGGGGGQRSLSPGGAALG YRDYRLQQLALG RLPPPPPPPLPRDLERERDYPFYERVRPAYSLEPRVGAG AGAAPFREVE ISPEDDQRANRTLFL  Database link: <a href="#">Q96T37</a>  <a href="#">Run BLAST with</a>  <a href="#">Run BLAST with</a>
<b>Positive control</b>	IHC-P: Human colon tissue. WB: K562, NIH/3T3 and NBT-II cell lysate. ICC/IF: U-2 OS cells.
<b>General notes</b>	This product was previously labelled as Rbm15

Reproducibility is key to advancing scientific discovery and accelerating scientists' next breakthrough.

Abcam is leading the way with our range of recombinant antibodies, knockout-validated antibodies and knockout cell lines, all of which support improved reproducibility.

We are also planning to innovate the way in which we present recommended applications and species on our product datasheets, so that only applications & species that have been tested in our own labs, our suppliers or by selected trusted collaborators are covered by our Abpromise™ guarantee.

In preparation for this, we have started to update the applications & species that this product is Abpromise guaranteed for.

We are also updating the applications & species that this product has been “predicted to work with,” however this information is not covered by our Abpromise guarantee.

Applications & species from publications and Abreviews that have not been tested in our own labs or in those of our suppliers are not covered by the Abpromise guarantee.

Please check that this product meets your needs before purchasing. If you have any questions,

special requirements or concerns, please send us an inquiry and/or contact our Support team ahead of purchase. Recommended alternatives for this product can be found below, as well as customer reviews and Q&As.

## Properties

---

<b>Form</b>	Liquid
<b>Storage instructions</b>	Shipped at 4°C. Store at +4°C short term (1-2 weeks). Upon delivery aliquot. Store at -20°C long term. Avoid freeze / thaw cycle.
<b>Storage buffer</b>	pH: 7.20 Preservative: 0.02% Sodium azide Constituents: PBS, 40% Glycerol (glycerin, glycerine)
<b>Purity</b>	Immunogen affinity purified
<b>Clonality</b>	Polyclonal
<b>Isotype</b>	IgG

## Applications

---

Our [Abpromise guarantee](#) covers the use of **ab244374** in the following tested applications.

The application notes include recommended starting dilutions; optimal dilutions/concentrations should be determined by the end user.

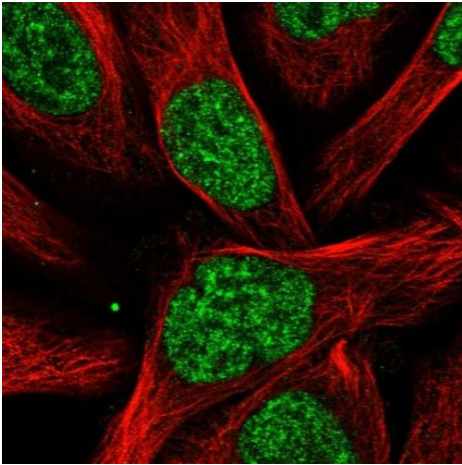
Application	Abreviews	Notes
ICC/IF		Use a concentration of 0.25 - 2 µg/ml. Fixation/Permeabilization: PFA/Triton X-100.
WB		Use a concentration of 0.04 - 0.4 µg/ml.
IHC-P		1/20 - 1/50. Perform heat mediated antigen retrieval with citrate buffer pH 6 before commencing with IHC staining protocol.

## Target

---

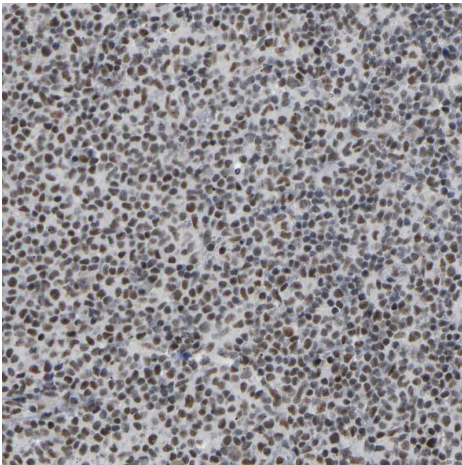
<b>Function</b>	May be implicated in HOX gene regulation.
<b>Involvement in disease</b>	A chromosomal aberration involving RBM15 may be a cause of acute megakaryoblastic leukemia. Translocation t(1;22)(p13;q13) with MKL1. Although both reciprocal fusion transcripts are detected in acute megakaryoblastic leukemia (AMKL, FAB-M7), the RBM15-MKL1 chimeric protein has all the putative functional domains encoded by each gene and is the candidate oncogene.
<b>Sequence similarities</b>	Belongs to the RRM Spen family. Contains 3 RRM (RNA recognition motif) domains. Contains 1 SPOC domain.
<b>Cellular localization</b>	Nucleus.

---



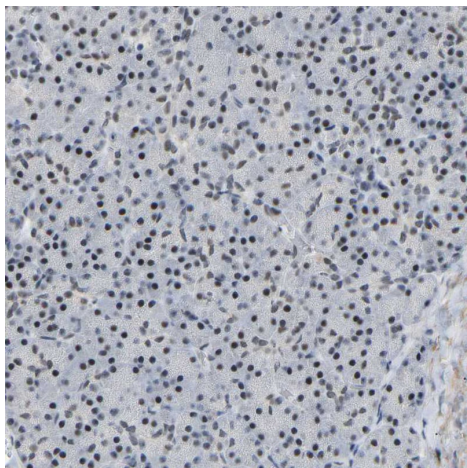
Immunocytochemistry/ Immunofluorescence - Anti-Rbm15/OTT antibody (ab244374)

PFA-fixed, Triton X-100 permeabilized U-2 OS (human bone osteosarcoma epithelial cell line) cells stained for Rbm15/OTT (green) using ab244374 at 4 µg/ml in ICC/IF.



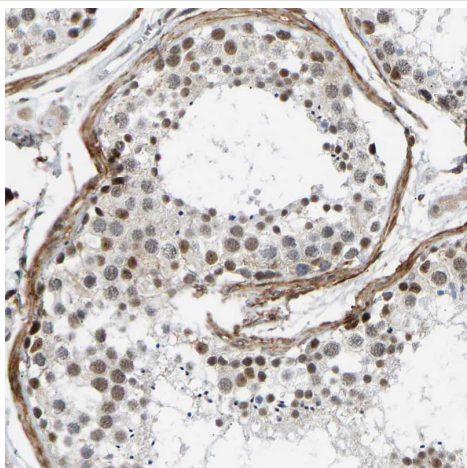
Immunohistochemistry (Formalin/PFA-fixed paraffin-embedded sections) - Anti-Rbm15/OTT antibody (ab244374)

Formalin-fixed, paraffin-embedded human lymph node tissue stained for Rbm15/OTT with ab244374 at a 1/20 dilution in immunohistochemical analysis.



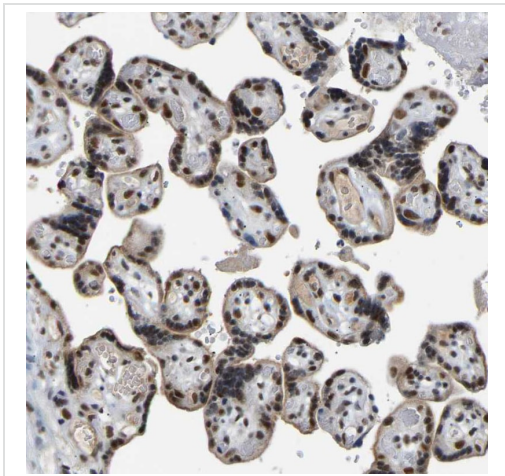
Formalin-fixed, paraffin-embedded human pancreas tissue stained for Rbm15/OTT with ab244374 at a 1/20 dilution in immunohistochemical analysis.

Immunohistochemistry (Formalin/PFA-fixed paraffin-embedded sections) - Anti-Rbm15/OTT antibody (ab244374)



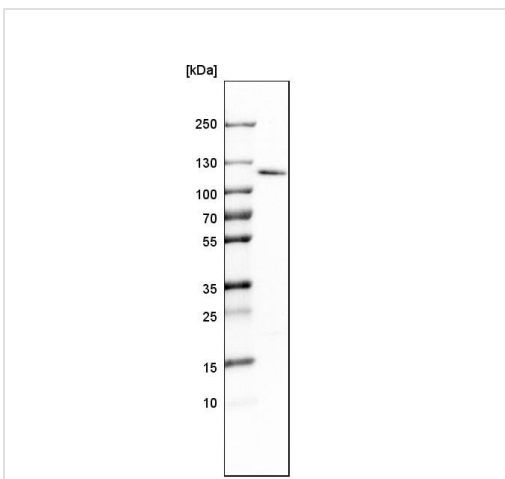
Formalin-fixed, paraffin-embedded human testis tissue stained for Rbm15/OTT with ab244374 at a 1/20 dilution in immunohistochemical analysis.

Immunohistochemistry (Formalin/PFA-fixed paraffin-embedded sections) - Anti-Rbm15/OTT antibody (ab244374)



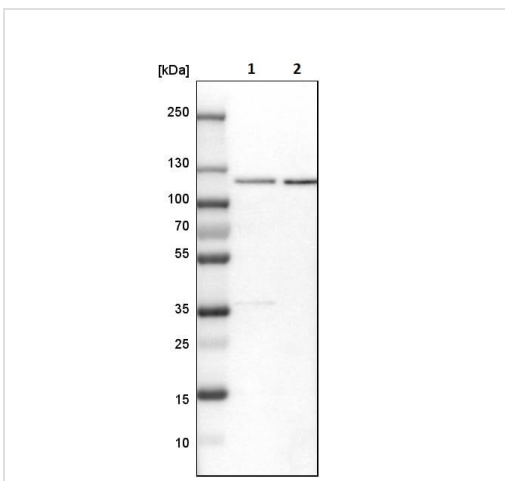
Immunohistochemistry (Formalin/PFA-fixed paraffin-embedded sections) - Anti-Rbm15/OTT antibody (ab244374)

Formalin-fixed, paraffin-embedded human placenta tissue stained for Rbm15/OTT with ab244374 at a 1/20 dilution in immunohistochemical analysis.



Western blot - Anti-Rbm15/OTT antibody (ab244374)

Anti-Rbm15/OTT antibody (ab244374) at 0.4  $\mu\text{g/ml}$  + K562 (Human chronic myelogenous leukemia cell line from bone marrow) cell lysate



Western blot - Anti-Rbm15/OTT antibody (ab244374)

**All lanes** : Anti-Rbm15/OTT antibody (ab244374) at 0.4  $\mu\text{g/ml}$

**Lane 1** : NIH/3T3 (Mouse embryo fibroblast cell line) cell lysate

**Lane 2** : NBT-II (Rat cell line) cell lysate

## **Our Abpromise to you: Quality guaranteed and expert technical support**

---

- Replacement or refund for products not performing as stated on the datasheet
- Valid for 12 months from date of delivery
- Response to your inquiry within 24 hours
  
- We provide support in Chinese, English, French, German, Japanese and Spanish
- Extensive multi-media technical resources to help you
- We investigate all quality concerns to ensure our products perform to the highest standards

If the product does not perform as described on this datasheet, we will offer a refund or replacement. For full details of the Abpromise, please visit <https://www.abcam.com/abpromise> or contact our technical team.

## **Terms and conditions**

---

- Guarantee only valid for products bought direct from Abcam or one of our authorized distributors