


Product datasheet

Anti-Rbm15/OTT antibody ab70549

3 References 3 Images

Overview

Product name	Anti-Rbm15/OTT antibody
Description	Rabbit polyclonal to Rbm15/OTT
Host species	Rabbit
Tested applications	Suitable for: ICC/IF, WB, IP
Species reactivity	Reacts with: Human Predicted to work with: Rabbit, Horse, Cow, Dog, Pig, Chimpanzee, Ferret, Rhesus monkey, Orangutan, Elephant 
Immunogen	Synthetic peptide corresponding to Human Rbm15/OTT.
Positive control	HeLa and 293T whole cell lysates.
General notes	This product was previously labelled as Rbm15

Properties

Form	Liquid
Storage instructions	Shipped at 4°C. Upon delivery aliquot and store at -20°C. Avoid freeze / thaw cycles.
Storage buffer	Preservative: 0.09% Sodium azide Constituents: 1.815% Tris, 1.764% Sodium citrate, 0.021% PBS
Purity	Immunogen affinity purified
Clonality	Polyclonal
Isotype	IgG

Applications

Our [Abpromise guarantee](#) covers the use of **ab70549** in the following tested applications.

The application notes include recommended starting dilutions; optimal dilutions/concentrations should be determined by the end user.

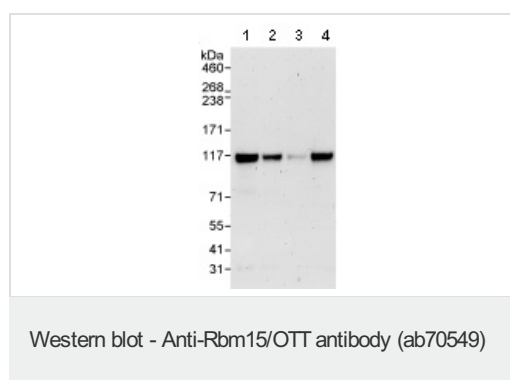
Application	Abreviews	Notes
ICC/IF		Use at an assay dependent concentration. PubMed: 24100041

Application	Abreviews	Notes
WB		1/2000 - 1/10000. Detects a band of approximately 107 kDa (predicted molecular weight: 107 kDa).
IP		Use at 2-5 µg/mg of lysate.

Target

Function	May be implicated in HOX gene regulation.
Involvement in disease	A chromosomal aberration involving RBM15 may be a cause of acute megakaryoblastic leukemia. Translocation t(1;22)(p13;q13) with MKL1. Although both reciprocal fusion transcripts are detected in acute megakaryoblastic leukemia (AMKL, FAB-M7), the RBM15-MKL1 chimeric protein has all the putative functional domains encoded by each gene and is the candidate oncogene.
Sequence similarities	Belongs to the RRM Spen family. Contains 3 RRM (RNA recognition motif) domains. Contains 1 SPOC domain.
Cellular localization	Nucleus.

Images



All lanes : Anti-Rbm15/OTT antibody (ab70549) at 0.1 µg/ml

Lane 1 : HeLa whole cell lysate at 50 µg

Lane 2 : HeLa whole cell lysate at 15 µg

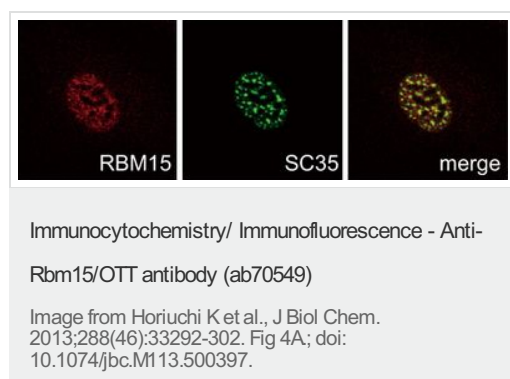
Lane 3 : HeLa whole cell lysate at 5 µg

Lane 4 : 293T whole cell lysate at 50 µg

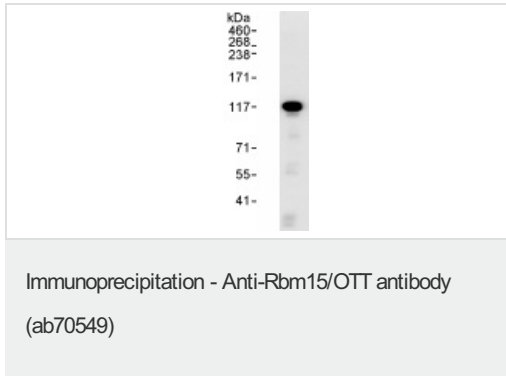
Predicted band size: 107 kDa

Observed band size: 107 kDa

Exposure time: 3 minutes



Immunocytochemistry/Immunofluorescence analysis of HUVEC cells labelling Rbm15/OTT (red) with ab70549 at 1:100. Cells were fixed with 4% paraformaldehyde in PBS for 5 minutes, permeabilized with 0.5% Triton X-100 in PBS for 5 minutes on ice, blocked with PBS containing 10% BlockAce and incubated with the primary antibodies. An Alexa Fluor 594-conjugated anti-rabbit IgG was used as the secondary antibody. SC35 - green. Rbm15/OTT and SC35 are partially co-localized in nuclear speckles and are also present in the the nucleoplasm.



Detection of Human Rbm15/OTT by Western Blot of Immunoprecipitate. ab70549 at 1µg/ml staining Rbm15/OTT in HeLa whole cell lysate immunoprecipitated by ab70549 at 3µg/mg lysate (1 mg/IP; 20% of IP loaded/lane).

Please note: All products are "FOR RESEARCH USE ONLY. NOT FOR USE IN DIAGNOSTIC PROCEDURES"

Our Abpromise to you: Quality guaranteed and expert technical support

- Replacement or refund for products not performing as stated on the datasheet
- Valid for 12 months from date of delivery
- Response to your inquiry within 24 hours
- We provide support in Chinese, English, French, German, Japanese and Spanish
- Extensive multi-media technical resources to help you
- We investigate all quality concerns to ensure our products perform to the highest standards

If the product does not perform as described on this datasheet, we will offer a refund or replacement. For full details of the Abpromise, please visit <https://www.abcam.com/abpromise> or contact our technical team.

Terms and conditions

- Guarantee only valid for products bought direct from Abcam or one of our authorized distributors