

Product datasheet

Anti-RBM33 antibody ab121695

4 Images

Overview

Product name	Anti-RBM33 antibody
Description	Rabbit polyclonal to RBM33
Host species	Rabbit
Tested applications	Suitable for: ICC/IF, WB, IHC-P
Species reactivity	Reacts with: Mouse, Human
Immunogen	antigen sequence: QHPPQHQQHH HHHHLSVPPP PLMPMSQPQF RPHVQTAQPQ ASSSRMQCPQ RQGLRHNTTS QNVSKRPMQQ MQPTAPRNSN LREL, corresponding to amino acids 628-711 of Human RBM33 Run BLAST with ExPASy Run BLAST with NCBI
Positive control	Human rectum tissue; RT-4 cells lysate

Properties

Form	Liquid
Storage instructions	Shipped at 4°C. Upon delivery aliquot and store at -20°C. Avoid freeze / thaw cycles.
Storage buffer	pH: 7.20 Preservative: 0.02% Sodium azide Constituents: 59% PBS, 40% Glycerol
Purity	Immunogen affinity purified
Clonality	Polyclonal
Isotype	IgG

Applications

Our [Abpromise guarantee](#) covers the use of **ab121695** in the following tested applications.

The application notes include recommended starting dilutions; optimal dilutions/concentrations should be determined by the end user.

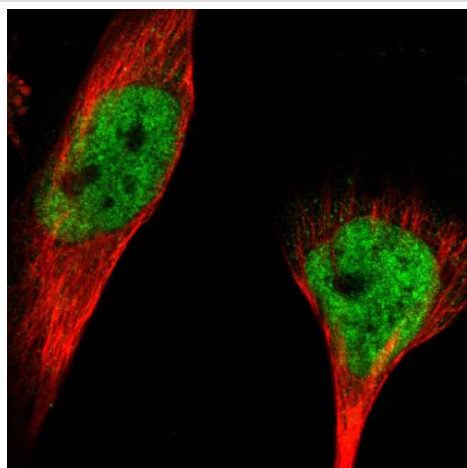
Application	Abreviews	Notes
ICC/IF		Use a concentration of 1 - 4 µg/ml. Recommend PFA Fixation and Triton X-100 treatment

Application	Abreviews	Notes
WB		1/100 - 1/500.
IHC-P		1/20 - 1/50. Perform heat mediated antigen retrieval with citrate buffer pH 6 before commencing with IHC staining protocol. Use buffer at pH 6 for antigen retrieval.

Target

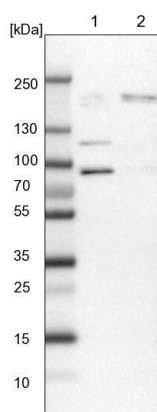
Sequence similarities Contains 1 RRM (RNA recognition motif) domain.

Images



Immunofluorescent staining of Human cell line U-251MG shows positivity in nuclei but not nucleoli. Recommended concentration of ab121695 1-4 µg/ml. Cells treated with PFA/Triton X-100.

Immunocytochemistry/ Immunofluorescence - Anti-RBM33 antibody (ab121695)

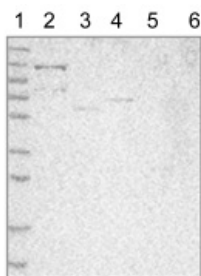


All lanes : Anti-RBM33 antibody (ab121695) at 1/100 dilution

Lane 1 : NIH-3T3 cell lysate (Mouse embryonic cells)

Lane 2 : NBT-II cell lysate (Rat Wistar bladder tumour cells)

Western blot - Anti-RBM33 antibody (ab121695)



Western blot - Anti-RBM33 antibody (ab121695)

All lanes : Anti-RBM33 antibody (ab121695) at 1/250 dilution

Lane 1 : Marker [kDa] 230, 130, 95, 72, 56, 36, 28, 17, 11

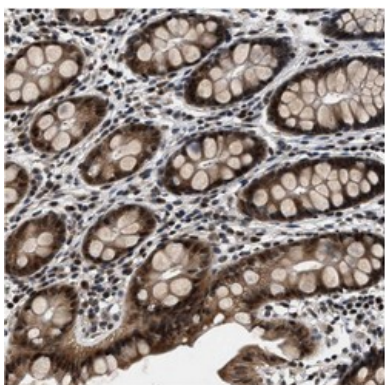
Lane 2 : RT-4 cells lysate

Lane 3 : U-251 MG cells lysate

Lane 4 : Human plasma lysate

Lane 5 : Liver lysate

Lane 6 : Tonsil lysate



Immunohistochemistry (Formalin/PFA-fixed paraffin-embedded sections) - Anti-RBM33 antibody (ab121695)

Immunohistochemical staining of paraffin embedded Human rectum tissue, using 1/40 ab121695.

Please note: All products are "FOR RESEARCH USE ONLY. NOT FOR USE IN DIAGNOSTIC PROCEDURES"

Our Abpromise to you: Quality guaranteed and expert technical support

- Replacement or refund for products not performing as stated on the datasheet
- Valid for 12 months from date of delivery
- Response to your inquiry within 24 hours
- We provide support in Chinese, English, French, German, Japanese and Spanish
- Extensive multi-media technical resources to help you
- We investigate all quality concerns to ensure our products perform to the highest standards

If the product does not perform as described on this datasheet, we will offer a refund or replacement. For full details of the Abpromise, please visit <https://www.abcam.com/abpromise> or contact our technical team.

Terms and conditions

- Guarantee only valid for products bought direct from Abcam or one of our authorized distributors