


Product datasheet

Anti-RBM34 antibody ab86788

2 Images

Overview

Product name	Anti-RBM34 antibody
Description	Rabbit polyclonal to RBM34
Host species	Rabbit
Tested applications	Suitable for: WB, IP
Species reactivity	Reacts with: Human Predicted to work with: Chimpanzee, Gorilla 
Immunogen	Synthetic peptide, corresponding to a region between residues 75 and 125 of human RBM34 (CAI21936.1).
Positive control	HeLa whole cell lysate
General notes	<p>Reproducibility is key to advancing scientific discovery and accelerating scientists' next breakthrough.</p> <p>Abcam is leading the way with our range of recombinant antibodies, knockout-validated antibodies and knockout cell lines, all of which support improved reproducibility.</p> <p>We are also planning to innovate the way in which we present recommended applications and species on our product datasheets, so that only applications & species that have been tested in our own labs, our suppliers or by selected trusted collaborators are covered by our Abpromise™ guarantee.</p> <p>In preparation for this, we have started to update the applications & species that this product is Abpromise guaranteed for.</p> <p>We are also updating the applications & species that this product has been “predicted to work with,” however this information is not covered by our Abpromise guarantee.</p> <p>Applications & species from publications and Abreviews that have not been tested in our own labs or in those of our suppliers are not covered by the Abpromise guarantee.</p> <p>Please check that this product meets your needs before purchasing. If you have any questions, special requirements or concerns, please send us an inquiry and/or contact our Support team ahead of purchase. Recommended alternatives for this product can be found below, as well as customer reviews and Q&As.</p>

Properties

Form	Liquid
Storage instructions	Shipped at 4°C. Upon delivery aliquot and store at -20°C. Avoid freeze / thaw cycles.
Storage buffer	pH: 7 Preservative: 0.09% Sodium azide Constituent: Tris citrate/phosphate
Purity	Immunogen affinity purified
Purification notes	ab86788 was affinity purified using an epitope specific to RBM34 immobilized on solid support.
Clonality	Polyclonal
Isotype	IgG

Applications

Our [Abpromise guarantee](#) covers the use of **ab86788** in the following tested applications.

The application notes include recommended starting dilutions; optimal dilutions/concentrations should be determined by the end user.

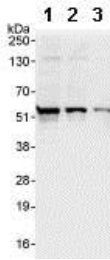
Application	Abreviews	Notes
WB		
IP		

Application notes	IP: Use at 10 µg/mg of lysate. WB: 1/2000 - 1/10,000. Predicted molecular weight: 49 kDa. Not yet tested in other applications. Optimal dilutions/concentrations should be determined by the end user.
--------------------------	---

Target

Sequence similarities	Belongs to the RRM RBM34 family. Contains 2 RRM (RNA recognition motif) domains.
Post-translational modifications	Phosphorylated upon DNA damage, probably by ATM or ATR.
Cellular localization	Nucleus > nucleolus.

Images



Western blot - Anti-RBM34 antibody (ab86788)

All lanes : Anti-RBM34 antibody (ab86788) at 0.1 µg/ml

Lane 1 : HeLa whole cell lysate at 50 µg

Lane 2 : HeLa whole cell lysate at 15 µg

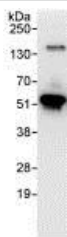
Lane 3 : HeLa whole cell lysate at 5 µg

Developed using the ECL technique.

Predicted band size: 49 kDa

Observed band size: 49 kDa

Exposure time: 10 seconds



Immunoprecipitation - Anti-RBM34 antibody (ab86788)

Detection of RBM34 by Western Blot of Immunoprecipitate. ab86788, at 0.4 µg/ml, staining RBM34 in HeLa whole cell lysate immunoprecipitated using ab86788 at 10 µg/mg lysate (1 mg/IP; 20% of IP loaded/lane).

Detection: Chemiluminescence with exposure time of 30 seconds.

Please note: All products are "FOR RESEARCH USE ONLY. NOT FOR USE IN DIAGNOSTIC PROCEDURES"

Our Abpromise to you: Quality guaranteed and expert technical support

- Replacement or refund for products not performing as stated on the datasheet
- Valid for 12 months from date of delivery
- Response to your inquiry within 24 hours
- We provide support in Chinese, English, French, German, Japanese and Spanish
- Extensive multi-media technical resources to help you
- We investigate all quality concerns to ensure our products perform to the highest standards

If the product does not perform as described on this datasheet, we will offer a refund or replacement. For full details of the Abpromise, please visit <https://www.abcam.com/abpromise> or contact our technical team.

Terms and conditions

- Guarantee only valid for products bought direct from Abcam or one of our authorized distributors