



Product datasheet

Anti-RBP4 antibody ab231582

2 Images

Overview

Product name	Anti-RBP4 antibody
Description	Rabbit polyclonal to RBP4
Host species	Rabbit
Tested applications	Suitable for: WB
Species reactivity	Reacts with: Chicken
Immunogen	<p>Recombinant full length protein (His-tag) corresponding to Chicken RBP4 aa 22-196. (Expressed in E.coli).</p> <p>Sequence:</p> <p>ERDCRVSSFVKENFDKNRYSGTWYAMAKKDPEGLF LQDNVVAQFTVDEN GQMSATAKGRVRLFNNWDVCADMIGSFTDTEPAKF KMKYWGVASFLQKG NDDHWVVDTDYDTYALHYSRELNEDGTCADSYFV FSRDPKGLPPEAQK VRQRQIDLCLDRKYRVIVHNGFCS</p> <p>Database link: P41263</p> <p style="text-align: right;">  Run BLAST with  Run BLAST with </p>
Positive control	WB: Recombinant chicken RBP4 protein; Chicken serum.

Properties

Form	Liquid
Storage instructions	Shipped at 4°C. Store at +4°C short term (1-2 weeks). Upon delivery aliquot. Store at -20°C long term. Avoid freeze / thaw cycle.
Storage buffer	<p>pH: 7.40</p> <p>Preservative: 0.02% Sodium azide</p> <p>Constituents: PBS, 50% Glycerol</p>
Purity	Immunogen affinity purified
Purification notes	ab231582 was purified by antigen-specific affinity chromatography followed by Protein A affinity chromatography.
Clonality	Polyclonal

Isotype

IgG

Applications

Our [Abpromise guarantee](#) covers the use of **ab231582** in the following tested applications.

The application notes include recommended starting dilutions; optimal dilutions/concentrations should be determined by the end user.

Application	Abreviews	Notes
WB		Use a concentration of 0.2 - 2 µg/ml. Predicted molecular weight: 23 kDa.

Target

Function

Delivers retinol from the liver stores to the peripheral tissues. In plasma, the RBP-retinol complex interacts with transthyretin, this prevents its loss by filtration through the kidney glomeruli.

Involvement in disease

Defects in RBP4 are a cause of retinol-binding protein deficiency (RBP deficiency) [MIM:180250]. This condition causes night vision problems. It produces a typical 'fundus xerophthalmicus', featuring a progressed atrophy of the retinal pigment epithelium.

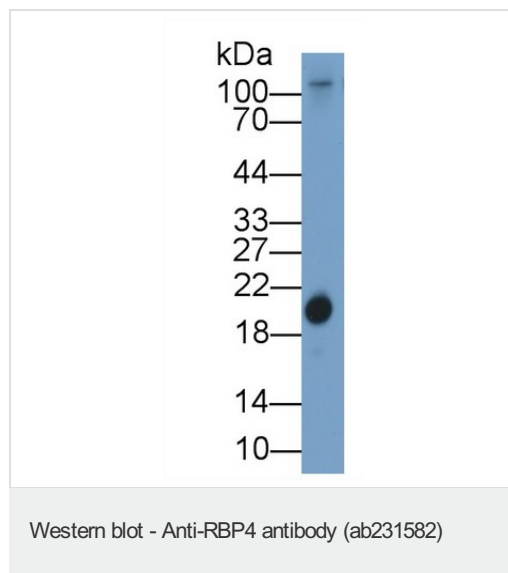
Sequence similarities

Belongs to the calycin superfamily. Lipocalin family.

Cellular localization

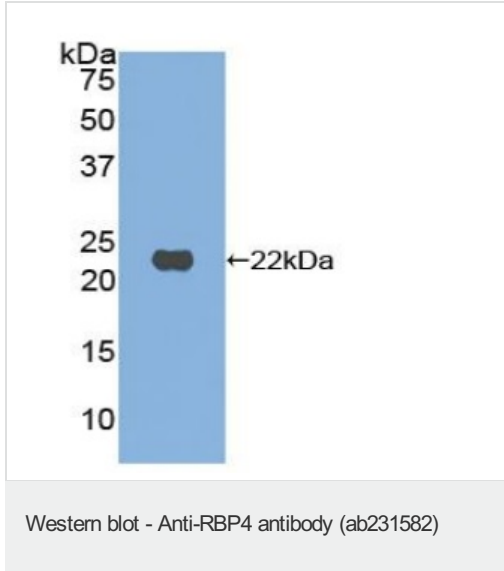
Secreted.

Images



Anti-RBP4 antibody (ab231582) at 1 µg/ml + Chicken serum.

Predicted band size: 23 kDa



Anti-RBP4 antibody (ab231582) at 2 µg/ml + Recombinant chicken RBP4 protein.

Predicted band size: 23 kDa

Please note: All products are "FOR RESEARCH USE ONLY. NOT FOR USE IN DIAGNOSTIC PROCEDURES"

Our Abpromise to you: Quality guaranteed and expert technical support

- Replacement or refund for products not performing as stated on the datasheet
- Valid for 12 months from date of delivery
- Response to your inquiry within 24 hours

- We provide support in Chinese, English, French, German, Japanese and Spanish
- Extensive multi-media technical resources to help you
- We investigate all quality concerns to ensure our products perform to the highest standards

If the product does not perform as described on this datasheet, we will offer a refund or replacement. For full details of the Abpromise, please visit <https://www.abcam.com/abpromise> or contact our technical team.

Terms and conditions

- Guarantee only valid for products bought direct from Abcam or one of our authorized distributors