


Product datasheet

Anti-RCC2 antibody ab70788

★★★★★ 2 Abreviews 1 References 2 Images

Overview

Product name	Anti-RCC2 antibody
Description	Rabbit polyclonal to RCC2
Host species	Rabbit
Tested applications	Suitable for: IHC-P, WB Unsuitable for: IP
Species reactivity	Reacts with: Mouse, Human Predicted to work with: Horse, Dog, Pig, Chimpanzee, Rhesus monkey, Orangutan, Bat, Elephant 
Immunogen	Synthetic peptide corresponding to a region between residue 475 and the C-terminus (residue 522) of human RCC2. (NP_061185.1).
Positive control	HeLa and 293T whole cell lysates.
General notes	<p>Reproducibility is key to advancing scientific discovery and accelerating scientists' next breakthrough.</p> <p>Abcam is leading the way with our range of recombinant antibodies, knockout-validated antibodies and knockout cell lines, all of which support improved reproducibility.</p> <p>We are also planning to innovate the way in which we present recommended applications and species on our product datasheets, so that only applications & species that have been tested in our own labs, our suppliers or by selected trusted collaborators are covered by our Abpromise™ guarantee.</p> <p>In preparation for this, we have started to update the applications & species that this product is Abpromise guaranteed for.</p> <p>We are also updating the applications & species that this product has been “predicted to work with,” however this information is not covered by our Abpromise guarantee.</p> <p>Applications & species from publications and Abreviews that have not been tested in our own labs or in those of our suppliers are not covered by the Abpromise guarantee.</p> <p>Please check that this product meets your needs before purchasing. If you have any questions, special requirements or concerns, please send us an inquiry and/or contact our Support team ahead of purchase. Recommended alternatives for this product can be found below, as well as customer reviews and Q&As.</p>

Properties

Properties

Form	Liquid
Storage instructions	Shipped at 4°C. Upon delivery aliquot and store at -20°C. Avoid freeze / thaw cycles.
Storage buffer	pH: 6.8 Preservative: 0.09% Sodium azide Constituents: 0.1% BSA, Tris buffered saline
Purity	Immunogen affinity purified
Clonality	Polyclonal
Isotype	IgG

Applications

Our [Abpromise guarantee](#) covers the use of **ab70788** in the following tested applications.

The application notes include recommended starting dilutions; optimal dilutions/concentrations should be determined by the end user.

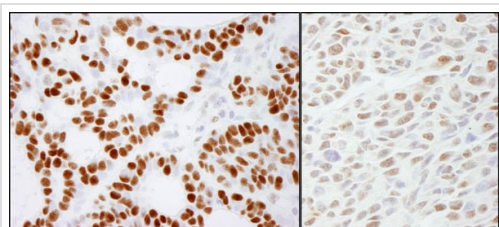
Application	Abreviews	Notes
IHC-P		1/200 - 1/1000. Perform heat mediated antigen retrieval with citrate buffer pH 6 before commencing with IHC staining protocol.
WB	★★★★★	1/2000 - 1/10000. Detects a band of approximately 56 kDa (predicted molecular weight: 56 kDa).

Application notes Is unsuitable for IP.

Target

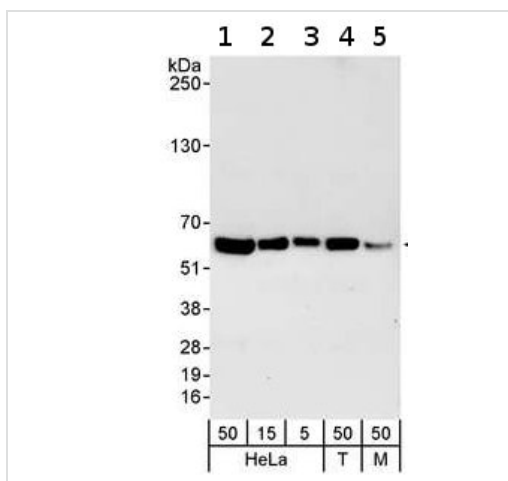
Function	Required for completion of mitosis and cytokinesis. May function as a guanine nucleotide exchange factor for the small GTPase RAC1.
Sequence similarities	Contains 7 RCC1 repeats.
Post-translational modifications	Phosphorylated upon DNA damage, probably by ATM or ATR.
Cellular localization	Nucleus > nucleolus. Chromosome > centromere. Cytoplasm > cytoskeleton > spindle. Appears in the nucleus at G2, then concentrates at the inner centromere region of chromosomes during prophase. Redistributes to the midzone of the mitotic spindle during anaphase. Here, the protein covers the entire equatorial diameter from cortex to cortex.

Images



Immunohistochemistry (Formalin/PFA-fixed paraffin-embedded sections) - Anti-RCC2 antibody (ab70788)

Immunohistochemistry (Formalin/PFA-fixed paraffin-embedded sections) analysis of human skin basal cell carcinoma (left) and mouse CT26 colon carcinoma (right) tissues labelling RCC2 with ab70788 at 1/1000 (0.2µg/ml) and 1/200 (1µg/ml). Detection: DAB.



Western blot - Anti-RCC2 antibody (ab70788)

All lanes : Anti-RCC2 antibody (ab70788) at 0.04 µg/ml

Lane 1 : HeLa whole cell lysate at 50 µg

Lane 2 : HeLa whole cell lysate at 15 µg

Lane 3 : HeLa whole cell lysate at 5 µg

Lane 4 : 293T whole cell lysate at 50 µg

Lane 5 : NIH3T3 whole cell lysate at 50 µg

Predicted band size: 56 kDa

Observed band size: 56 kDa

Please note: All products are "FOR RESEARCH USE ONLY. NOT FOR USE IN DIAGNOSTIC PROCEDURES"

Our Abpromise to you: Quality guaranteed and expert technical support

- Replacement or refund for products not performing as stated on the datasheet
- Valid for 12 months from date of delivery
- Response to your inquiry within 24 hours
- We provide support in Chinese, English, French, German, Japanese and Spanish
- Extensive multi-media technical resources to help you
- We investigate all quality concerns to ensure our products perform to the highest standards

If the product does not perform as described on this datasheet, we will offer a refund or replacement. For full details of the Abpromise, please visit <https://www.abcam.com/abpromise> or contact our technical team.

Terms and conditions

- Guarantee only valid for products bought direct from Abcam or one of our authorized distributors