

Product datasheet

Anti-REBOV GP antibody ab190658

2 Images

Overview

Product name	Anti-REBOV GP antibody
Description	Rabbit polyclonal to REBOV GP
Host species	Rabbit
Specificity	ab190658 detects recombinant REBOV GP without the transmembrane region (REBOV rGPdTM). No cross reactivity to Sudan ebolavirus (SEBOV) GP, Zaire ebolavirus (ZEBOV) GP, Bundibugyo (BEBOV) GP or Marburg (MARV) GP, was observed in Western blot analysis.
Tested applications	Suitable for: WB
Species reactivity	Reacts with: Species independent
Immunogen	Synthetic peptide corresponding to REBOV GP. (Reston Ebola virus glycoprotein). Database link: Q66800

Properties

Form	Liquid
Storage instructions	Shipped at 4°C. Store at +4°C short term (1-2 weeks). Upon delivery aliquot. Store at -20°C long term. Avoid freeze / thaw cycle.
Storage buffer	Constituent: 100% PBS
Purity	Immunogen affinity purified
Clonality	Polyclonal
Isotype	IgG

Applications

Our [Abpromise guarantee](#) covers the use of **ab190658** in the following tested applications.

The application notes include recommended starting dilutions; optimal dilutions/concentrations should be determined by the end user.

Application	Abreviews	Notes
WB		Use a concentration of 0.5 µg/ml. Predicted molecular weight: 42 kDa.

Target

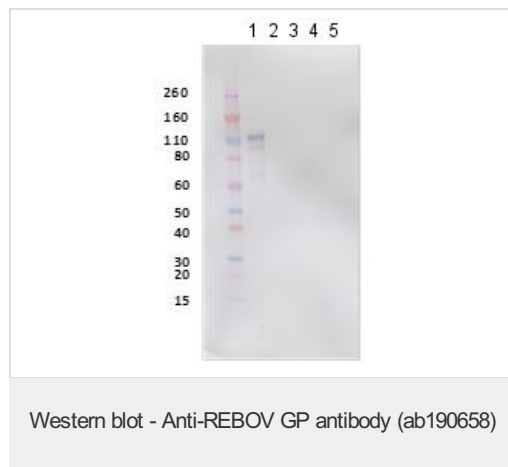
Relevance

REBOV GP seems to possess an anti-inflammatory activity as it can reverse the barrier-decreasing effects of TNF alpha. Might therefore contribute to the lack of inflammatory reaction seen during infection in spite the of extensive necrosis and massive virus production. Does not seem to be involved in activation of primary macrophages. Does not seem to interact specifically with neutrophils. Delta-peptide does not seem to be involved in activation of primary macrophages B REBOV GP is a homodimer; disulfide-linked. The homodimers are linked by two disulfide bonds in a parallel orientation. Delta-peptide is a monome

Cellular localization

Secreted

Images



All lanes : Anti-REBOV GP antibody (ab190658) at 0.05 µg/ml

Lane 1 : REBOV rGPdTM supernatant at 15 µl

Lane 2 : ZEBOV rGPdTM at 0.2 µg

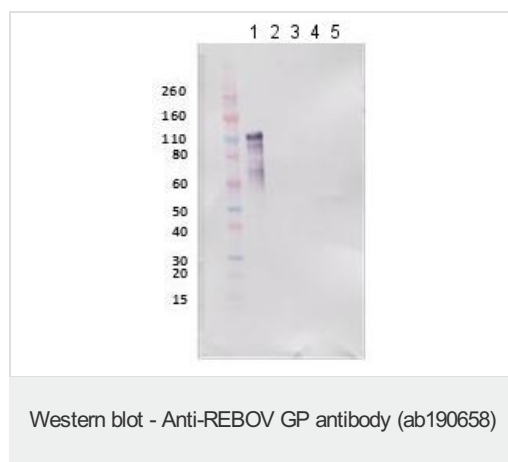
Lane 3 : SEBOV rGPdTM at 0.2 µg

Lane 4 : MARV rGPdTM at 0.2 µg

Lane 5 : BEBOV rGPdTM at 0.2 µg

Predicted band size: 42 kDa

REBOV GP is visualized as a broad band representing differing glycosylation patterns.



All lanes : Anti-REBOV GP antibody (ab190658) at 0.5 µg/ml

Lane 1 : REBOV rGPdTM supernatant at 15 µl

Lane 2 : ZEBOV rGPdTM at 0.2 µg

Lane 3 : SEBOV rGPdTM at 0.2 µg

Lane 4 : MARV rGPdTM at 0.2 µg

Lane 5 : BEBOV rGPdTM at 0.2 µg

Predicted band size: 42 kDa

REBOV GP is visualized as a broad band representing differing glycosylation patterns.

Please note: All products are "FOR RESEARCH USE ONLY. NOT FOR USE IN DIAGNOSTIC PROCEDURES"

Our Abpromise to you: Quality guaranteed and expert technical support

- Replacement or refund for products not performing as stated on the datasheet
- Valid for 12 months from date of delivery
- Response to your inquiry within 24 hours

- We provide support in Chinese, English, French, German, Japanese and Spanish
- Extensive multi-media technical resources to help you
- We investigate all quality concerns to ensure our products perform to the highest standards

If the product does not perform as described on this datasheet, we will offer a refund or replacement. For full details of the Abpromise, please visit <https://www.abcam.com/abpromise> or contact our technical team.

Terms and conditions

- Guarantee only valid for products bought direct from Abcam or one of our authorized distributors