

Product datasheet

Recombinant BK polyomavirus, strain AS, Major Capsid VP1 protein (Tagged) ab237745

3 Images

Description

Product name	Recombinant BK polyomavirus, strain AS, Major Capsid VP1 protein (Tagged)	
Purity	> 85 % SDS-PAGE.	
Expression system	Escherichia coli	
Accession	P03088	
Protein length	Full length protein	
Animal free	No	
Nature	Recombinant	
Sequence	<pre> MAPTKRKGECPGAAPKKPKPEVQVPKLLIKGGVEVLE VKTGVDAITEVEC FLNPEMGDPDENLRGFSKLSAENDFSSDSPERKML PCYSTARIPLPNLN EDLTCGNLLMWEAVTVQTEVIGITSMNLNHAGSQKVHE HGGGKPIQGSNF HFFAVGGEPLEMQGVLMNYRSKYPDGTITPKNPTAQS QVMNTDHKAYLDK NNAYPVECWWPDPSRNENARYFGTFTGGENVPPVLH VTNTATTVLLDEQG VGPLCKADSLYSAADICGLFTNSSGTQQWRGLARYF KIRLRKRSVKNPY PISFLLSDLINRRTQRVDGQPMYGMESQVEEVRVFDG TERLPGDPDMIRYIDKQGQLQTKML </pre>	
Predicted molecular weight	45 kDa including tags	
Amino acids	1 to 362	
Tags	His tag N-Terminus	
Additional sequence information	BK polyomavirus (BKPvV). N-terminal 10xHis-tag and C-terminal Myc-tag.	

Specifications

Our [Abpromise guarantee](#) covers the use of **ab237745** in the following tested applications.

The application notes include recommended starting dilutions; optimal dilutions/concentrations should be determined by the end user.

Applications	Mass Spectrometry SDS-PAGE
Mass spectrometry	LC-MS/MS
Form	Liquid

Preparation and Storage

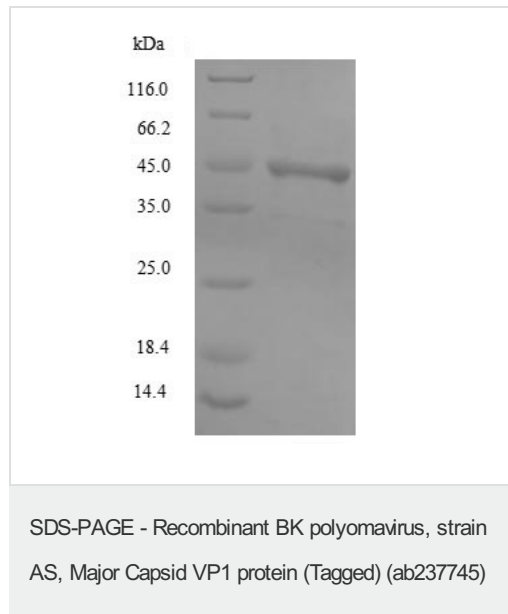
Stability and Storage	Shipped at 4°C. Store at -20°C or -80°C. Avoid freeze / thaw cycle. Constituents: Tris buffer, 50% Glycerol
------------------------------	--

General Info

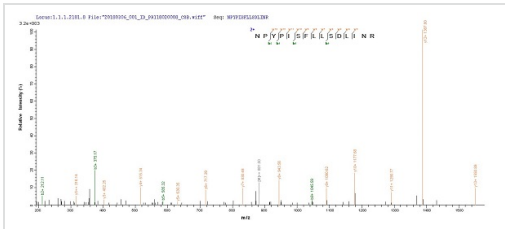
Relevance	BK polyomavirus was first isolated in 1971 in the urine of a renal transplant patient, initials B.K. BK polyomavirus, Major Capsid VP1 forms the icosahedric capsid of the virus protecting the viral genome. This capsid is composed of 360 VP1, assembled in 72 pentamers. Each pentamer are linked via the C-terminal end of VP1.
------------------	--

Cellular localization	Virion. Nucleus
------------------------------	-----------------

Images

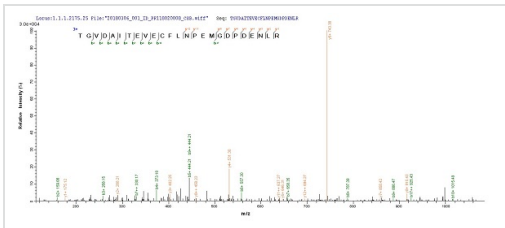


(Tris-Glycine gel) Discontinuous SDS-PAGE (reduced) analysis with 5% enrichment gel and 15% separation gel of ab237745.



Mass Spectrometry - Recombinant BK polyomavirus, strain AS, Major Capsid VP1 protein (Tagged) (ab237745)

Based on the SEQUEST from database of E.coli host and target protein, the LC-MS/MS Analysis result of ab237745 could indicate that this peptide derived from E.coli-expressed BK polyomavirus (BKPyV) (Human polyomavirus 1) Major Capsid VP1.



Mass Spectrometry - Recombinant BK polyomavirus, strain AS, Major Capsid VP1 protein (Tagged) (ab237745)

Based on the SEQUEST from database of E.coli host and target protein, the LC-MS/MS Analysis result of ab237745 could indicate that this peptide derived from E.coli-expressed BK polyomavirus (BKPyV) (Human polyomavirus 1) Major Capsid VP1.

Please note: All products are "FOR RESEARCH USE ONLY. NOT FOR USE IN DIAGNOSTIC PROCEDURES"

Our Abpromise to you: Quality guaranteed and expert technical support

- Replacement or refund for products not performing as stated on the datasheet
- Valid for 12 months from date of delivery
- Response to your inquiry within 24 hours
- We provide support in Chinese, English, French, German, Japanese and Spanish
- Extensive multi-media technical resources to help you
- We investigate all quality concerns to ensure our products perform to the highest standards

If the product does not perform as described on this datasheet, we will offer a refund or replacement. For full details of the Abpromise, please visit <https://www.abcam.com/abpromise> or contact our technical team.

Terms and conditions

- Guarantee only valid for products bought direct from Abcam or one of our authorized distributors