

Product datasheet

Recombinant Chikungunya Virus protein (Fc Chimera)  
 ab243285

4 Images

Description

<b>Product name</b>	Recombinant Chikungunya Virus protein (Fc Chimera)
<b>Expression system</b>	HEK 293 cells
<b>Protein length</b>	Protein fragment
<b>Animal free</b>	No
<b>Nature</b>	Recombinant
<b>Amino acids</b>	326 to 693
<b>Additional sequence information</b>	Chikungunya Virus E2 Envelope Protein. C-terminal human IgG1 Fc tag.

Specifications

Our [Abpromise guarantee](#) covers the use of **ab243285** in the following tested applications.

The application notes include recommended starting dilutions; optimal dilutions/concentrations should be determined by the end user.

<b>Applications</b>	SDS-PAGE
	ELISA
	Western blot

<b>Form</b>	Liquid
-------------	--------

**Additional notes**

Abcam has not and does not intend to apply for the REACH Authorisation of customers' uses of products that contain European Authorisation list (Annex XIV) substances.  
 It is the responsibility of our customers to check the necessity of application of REACH Authorisation, and any other relevant authorisations, for their intended uses.

Preparation and Storage

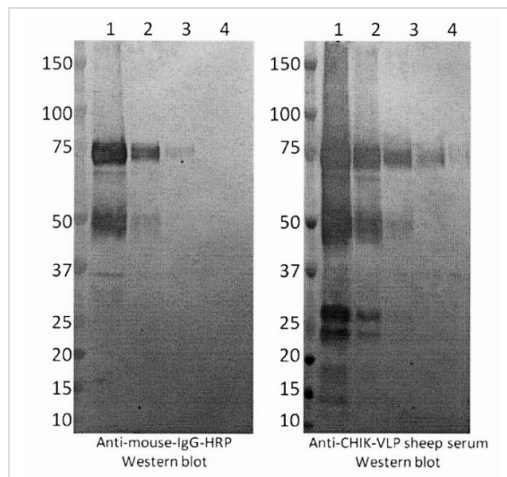
<b>Stability and Storage</b>	Shipped at 4°C. Store at -80°C. Avoid freeze / thaw cycle.
	pH: 7.00
	Constituents: HEPES, 1.74% Sodium chloride, 0.25% Triton-X-100

General Info

## Relevance

Chikungunya is caused by the chikungunya virus (CHIKV), an arthropod-borne virus (arbovirus). Chikungunya is a member of the Alphavirus genus in the family Togaviridae. There are 29 different types of alphaviruses that cause diseases in humans and other mammals. These species of arboviruses have been classified into 7 antigenic complexes: Barmah Forest (BF), Eastern equine encephalitis (EEE), Middelburg (MID), Ndumu (NDU), Semliki Forest (SF), Venezuelan equine encephalitis (VEE), and Western equine encephalitis (WEE).

## Images



Western blot - Recombinant Chikungunya Virus protein (Fc Chimera) (ab243285)

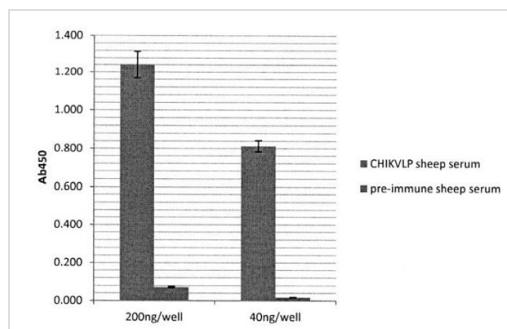
Lane 1: 1000 ng

Lane 2: 100  $\mu$ g

Lane 3: 10  $\mu$ g

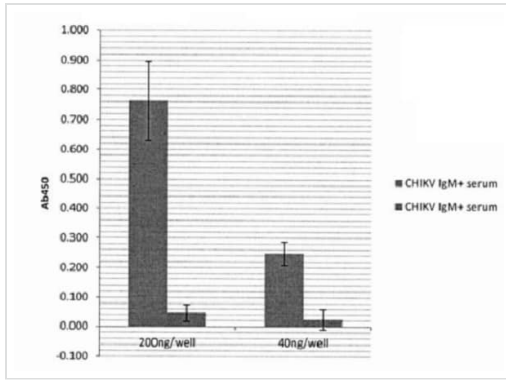
Lane 4: 1  $\mu$ g

Western blot - Recombinant Chikungunya Virus protein (Fc Chimera) (ab243285)



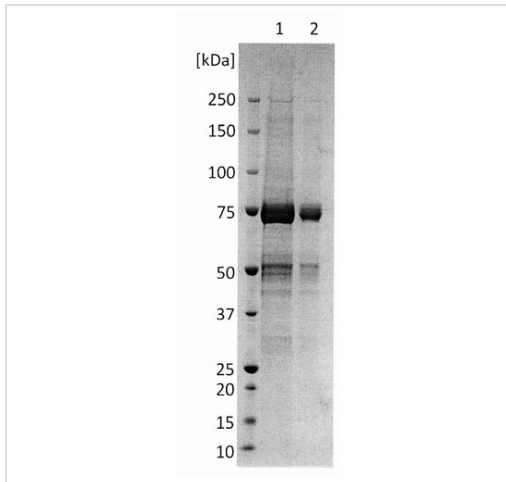
ELISA - Recombinant Chikungunya Virus protein (Fc Chimera) (ab243285) - anti-CHIK-VLP serum.

ELISA - Recombinant Chikungunya Virus protein (Fc Chimera) (ab243285)



ELISA - Recombinant Chikungunya Virus protein (Fc Chimera) (ab243285) - Human serum reactivity.

ELISA - Recombinant Chikungunya Virus protein (Fc Chimera) (ab243285)



SDS-PAGE - Recombinant Chikungunya Virus protein (Fc Chimera) (ab243285)

Lane 1: 4 µg

Lane 2: 1 µg

SDS-PAGE - Recombinant Chikungunya Virus protein (Fc Chimera) (ab243285)

**Please note:** All products are "FOR RESEARCH USE ONLY. NOT FOR USE IN DIAGNOSTIC PROCEDURES"

### Our Abpromise to you: Quality guaranteed and expert technical support

- Replacement or refund for products not performing as stated on the datasheet
- Valid for 12 months from date of delivery
- Response to your inquiry within 24 hours
- We provide support in Chinese, English, French, German, Japanese and Spanish
- Extensive multi-media technical resources to help you
- We investigate all quality concerns to ensure our products perform to the highest standards

If the product does not perform as described on this datasheet, we will offer a refund or replacement. For full details of the Abpromise, please visit <https://www.abcam.com/abpromise> or contact our technical team.

### Terms and conditions

- Guarantee only valid for products bought direct from Abcam or one of our authorized distributors