

Product datasheet

Recombinant *E. coli* Beta-lactamase CTX-M-1 protein (His tag) ab226272

3 Images

Description

Product name	Recombinant <i>E. coli</i> Beta-lactamase CTX-M-1 protein (His tag)	
Purity	> 90 % SDS-PAGE.	
Expression system	Escherichia coli	
Accession	P28585	
Protein length	Full length protein	
Animal free	No	
Nature	Recombinant	
Species	Escherichia coli	
Sequence	QTADVQQKLAELERQSGGRLGVALINTADNSQILYRAD ERFAMCSTSKVM AVAAVLKKSESEPNLLNQRVEIKKSDLVNYNPIAEKHV DGTMSLAELSAA ALQYSDNVAMNKLISHVGGPASVTAFARQLGDETFRL DRTEPTLNTAIPG DPRDTTSPRAMAQTLRNLTLGKALGDSQRAQLVTWM KGNTTGAASIQAGL PASWVVGDKTGSGDYGTTNDIAVWPKDRAPLILVTYF TQPQPKAESRRD VLASAAKMTNGL	
Predicted molecular weight	32 kDa including tags	
Amino acids	29 to 291	
Tags	His tag N-Terminus	
Additional sequence information	Strain K12. This product is the mature full length protein from aa 29 to 291. The signal peptide is not included.	

Specifications

Our [Abpromise guarantee](#) covers the use of **ab226272** in the following tested applications.

The application notes include recommended starting dilutions; optimal dilutions/concentrations should be determined by the end user.

Applications Mass Spectrometry

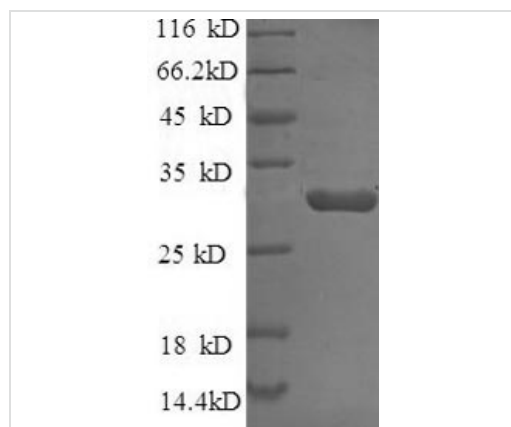
	SDS-PAGE
Mass spectrometry	LC-MS/MS
Form	Liquid

Preparation and Storage

Stability and Storage	Shipped at 4°C. Upon delivery aliquot. Store at -20°C or -80°C. Avoid freeze / thaw cycle. Constituents: 50% Glycerol, Tris buffer
------------------------------	---

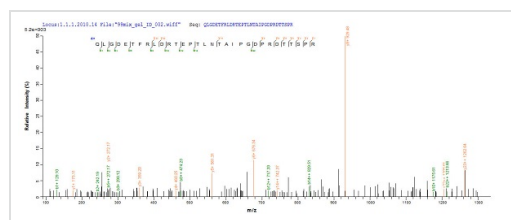
General Info

Images



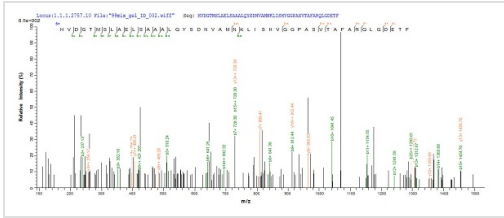
(Tris-Glycine gel) Discontinuous SDS-PAGE (reduced) analysis of ab226272 with 5% enrichment gel and 15% separation gel.

SDS-PAGE - Recombinant *E. coli* Beta-lactamase CTX-M-1 protein (His tag) (ab226272)



Based on the SEQUEST from database of E.coli host and target protein, the LC-MS/MS analysis result of ab226272 could indicate that this peptide derived from E.coli-expressed Escherichia coli Beta-lactamase CTX-M-1.

Mass Spectrometry - Recombinant *E. coli* Beta-lactamase CTX-M-1 protein (His tag) (ab226272)



Mass Spectrometry - Recombinant *E. coli* Beta-lactamase CTX-M-1 protein (His tag) (ab226272)

Based on the SEQUEST from database of E.coli host and target protein, the LC-MS/MS analysis result of ab226272 could indicate that this peptide derived from E.coli-expressed *Escherichia coli* Beta-lactamase CTX-M-1.

Please note: All products are "FOR RESEARCH USE ONLY. NOT FOR USE IN DIAGNOSTIC PROCEDURES"

Our Abpromise to you: Quality guaranteed and expert technical support

- Replacement or refund for products not performing as stated on the datasheet
- Valid for 12 months from date of delivery
- Response to your inquiry within 24 hours
- We provide support in Chinese, English, French, German, Japanese and Spanish
- Extensive multi-media technical resources to help you
- We investigate all quality concerns to ensure our products perform to the highest standards

If the product does not perform as described on this datasheet, we will offer a refund or replacement. For full details of the Abpromise, please visit <https://www.abcam.com/abpromise> or contact our technical team.

Terms and conditions

- Guarantee only valid for products bought direct from Abcam or one of our authorized distributors