

Product datasheet

Recombinant *E. coli* mdh protein ab124594

1 References 1 Image

Description

Product name	Recombinant <i>E. coli</i> mdh protein
Purity	> 95 % SDS-PAGE. ab124594 is purified using conventional chromatography techniques.
Expression system	Escherichia coli
Accession	P61889
Protein length	Full length protein
Animal free	No
Nature	Recombinant
Species	Escherichia coli
Sequence	<pre> MGSSHHHHHH SSGLVPRGSH MGSHMKVAVL GAAGGIGQAL ALLLKTQLPS GSELSLYDIA PVTPGVAVDL SHIPTAVKIK GFSGEDATPA LEGADVVLIS AGVARKPGMD RSDLFNVNAG IVKNLVQQVA KTCPKACIGI ITNPVNTTVA IAAEVLKKAG VYDKNKLFV TTLDIIRSNT FVAELKKGKQP GEVEVPVIGG HSGVTILPLL SQVPGVSFTE QEVADLTKRI QNAGTEVVEA KAGGGSATLS MGQAAARFGL SLVRALQGEQ GVVECA YVEG DGQYARFFSQ PLLL GKNGVE ERKSIGTLSA FEQNALEGML DTLKKDIALG EEFVNK </pre>
Predicted molecular weight	35 kDa including tags
Amino acids	1 to 312
Tags	His tag N-Terminus

Specifications

Our [Abpromise guarantee](#) covers the use of **ab124594** in the following tested applications.

The application notes include recommended starting dilutions; optimal dilutions/concentrations should be determined by the end user.

Applications	SDS-PAGE Mass Spectrometry
Mass spectrometry	MALDI-TOF
Form	Liquid

Preparation and Storage

Stability and Storage

Shipped at 4°C. Upon delivery aliquot and store at -20°C or -80°C. Avoid repeated freeze / thaw cycles.

pH: 8.00

Constituents: 0.02% DTT, 0.32% Tris HCl, 10% Glycerol (glycerin, glycerine), 0.29% Sodium chloride

General Info

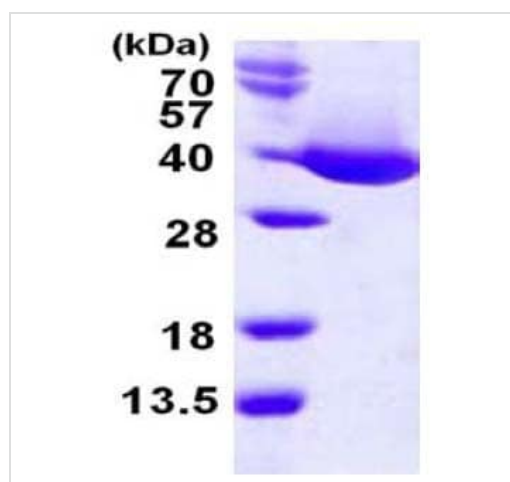
Function

Catalyzes the reversible oxidation of malate to oxaloacetate.

Sequence similarities

Belongs to the LDH/MDH superfamily. MDH type 1 family.

Images



15% SDS-PAGE showing ab124594 (3µg).

SDS-PAGE - Recombinant *E. coli* mdh protein
(ab124594)

Please note: All products are "FOR RESEARCH USE ONLY. NOT FOR USE IN DIAGNOSTIC PROCEDURES"

Our Abpromise to you: Quality guaranteed and expert technical support

- Replacement or refund for products not performing as stated on the datasheet
- Valid for 12 months from date of delivery
- Response to your inquiry within 24 hours
- We provide support in Chinese, English, French, German, Japanese and Spanish
- Extensive multi-media technical resources to help you
- We investigate all quality concerns to ensure our products perform to the highest standards

If the product does not perform as described on this datasheet, we will offer a refund or replacement. For full details of the Abpromise, please visit <https://www.abcam.com/abpromise> or contact our technical team.

Terms and conditions

- Guarantee only valid for products bought direct from Abcam or one of our authorized distributors