

Product datasheet

Recombinant *E. coli* PPIA protein (His tag) ab225608

1 Image

Description

Product name	Recombinant <i>E. coli</i> PPIA protein (His tag)	
Purity	> 90 % SDS-PAGE.	
Expression system	Escherichia coli	
Accession	P0AFL5	
Protein length	Full length protein	
Animal free	No	
Nature	Recombinant	
Species	Escherichia coli	
Sequence	AKGDPHVLLTTSAGNIELELDKQKAPVSVQNFVDYVNSGF YNNTTFHRVI PGFMIQGGGFTEQMQQKKPNPPIKNEADNGLRNTRGTIAM ARTADKDSAT SQFFINVADNAFLDHGQRDFGYAVFGKVVKGMDVADKIS QVPTHDVGPYQ NVPSKPVVILSAKVLP	
Predicted molecular weight	34 kDa including tags	
Amino acids	25 to 190	
Tags	His tag N-Terminus	
Additional sequence information	Escherichia coli O157:H7. This product is the full-length mature protein from aa 25 to 190 with a 6xHis-SUMO tag at the N-terminus. The signal peptide is not included.	

Specifications

Our [Abpromise guarantee](#) covers the use of **ab225608** in the following tested applications.

The application notes include recommended starting dilutions; optimal dilutions/concentrations should be determined by the end user.

Applications	SDS-PAGE
Form	Liquid

Preparation and Storage

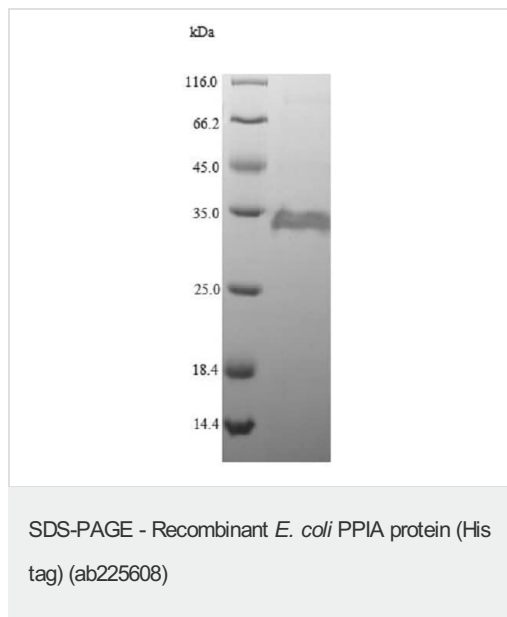
Stability and Storage Shipped at 4°C. Upon delivery aliquot. Store at -20°C or -80°C. Avoid freeze / thaw cycle.

Constituents: 50% Glycerol (glycerin, glycerine), Tris buffer

General Info

Function	PPases accelerate the folding of proteins. It catalyzes the cis-trans isomerization of proline imidic peptide bonds in oligopeptides.
Sequence similarities	Belongs to the cyclophilin-type PPase family. Contains 1 PPase cyclophilin-type domain.
Cellular localization	Periplasm.

Images



(Tris-Glycine gel) Discontinuous SDS-PAGE (reduced) analysis of ab225608 with 5% enrichment gel and 15% separation gel.

Please note: All products are "FOR RESEARCH USE ONLY. NOT FOR USE IN DIAGNOSTIC PROCEDURES"

Our Abpromise to you: Quality guaranteed and expert technical support

- Replacement or refund for products not performing as stated on the datasheet
- Valid for 12 months from date of delivery
- Response to your inquiry within 24 hours

- We provide support in Chinese, English, French, German, Japanese and Spanish
- Extensive multi-media technical resources to help you
- We investigate all quality concerns to ensure our products perform to the highest standards

If the product does not perform as described on this datasheet, we will offer a refund or replacement. For full details of the Abpromise, please visit <https://www.abcam.com/abpromise> or contact our technical team.

Terms and conditions

- Guarantee only valid for products bought direct from Abcam or one of our authorized distributors