

Product datasheet

Recombinant German cockroach Allergen Bla g 4 protein (His tag) ab225565

3 Images

Description

Product name	Recombinant German cockroach Allergen Bla g 4 protein (His tag)	
Purity	> 90 % SDS-PAGE.	
Expression system	Escherichia coli	
Accession	P54962	
Protein length	Full length protein	
Animal free	No	
Nature	Recombinant	
Species	German cockroach	
Sequence	<p>NEDCFRHESLVPNLDYERFRGSWIIAAGTSEALTQYKCWI DRFSYDDALV SKYTDSQGKNRTTIRGRTKFEGNKFTIDYNDKKGKAFSAPYS VLATDYENY AMEGCPAAANGHVIVQIRFSVRRFHPKLGDKEMIQHYTL DQVNQHKKA IEEDLKHFNLYEDLHSTCH</p>	
Predicted molecular weight	36 kDa including tags	
Amino acids	13 to 182	
Tags	His tag N-Terminus	
Additional sequence information	This product is the mature full length protein from aa 13 to 182 with 6xHis-SUMO tag at the N-terminus. The signal peptide is not included.	

Specifications

Our [Abpromise guarantee](#) covers the use of **ab225565** in the following tested applications.

The application notes include recommended starting dilutions; optimal dilutions/concentrations should be determined by the end user.

Applications	SDS-PAGE
	Mass Spectrometry
Mass spectrometry	LC-MS/MS
Form	Liquid

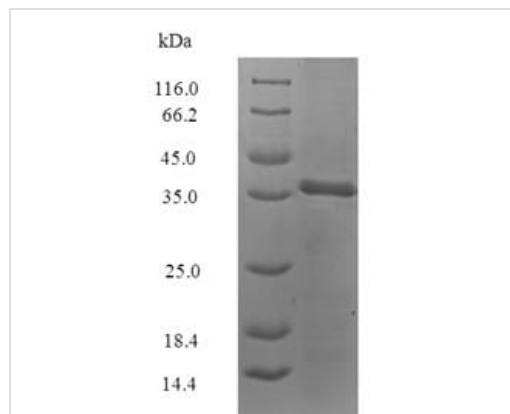
Preparation and Storage

Stability and Storage

Shipped at 4°C. Upon delivery aliquot. Store at -20°C or -80°C. Avoid freeze / thaw cycle.

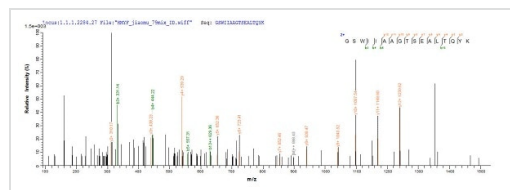
Constituents: 50% Glycerol (glycerin, glycerine), Tris buffer

Images



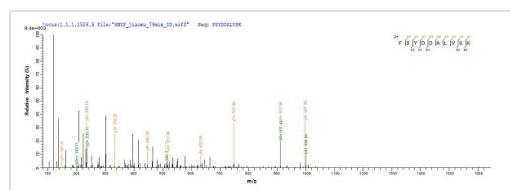
SDS-PAGE - Recombinant German cockroach Allergen Bla g 4 protein (His tag) (ab225565)

(Tris-Glycine gel) Discontinuous SDS-PAGE (reduced) analysis of ab225565 with 5% enrichment gel and 15% separation gel.



Mass Spectrometry - Recombinant German cockroach Allergen Bla g 4 protein (His tag) (ab225565)

Based on the SEQUEST from database of E.coli host and target protein, the LC-MS/MS analysis result of ab225565 could indicate that this peptide derived from E.coli-expressed German cockroach Allergen Bla g 4 protein.



Mass Spectrometry - Recombinant German cockroach Allergen Bla g 4 protein (His tag) (ab225565)

Based on the SEQUEST from database of E.coli host and target protein, the LC-MS/MS analysis result of ab225565 could indicate that this peptide derived from E.coli-expressed German cockroach Allergen Bla g 4 protein.

Please note: All products are "FOR RESEARCH USE ONLY. NOT FOR USE IN DIAGNOSTIC PROCEDURES"

Our Abpromise to you: Quality guaranteed and expert technical support

- Replacement or refund for products not performing as stated on the datasheet
- Valid for 12 months from date of delivery
- Response to your inquiry within 24 hours

- We provide support in Chinese, English, French, German, Japanese and Spanish
- Extensive multi-media technical resources to help you
- We investigate all quality concerns to ensure our products perform to the highest standards

If the product does not perform as described on this datasheet, we will offer a refund or replacement. For full details of the Abpromise, please visit <https://www.abcam.com/abpromise> or contact our technical team.

Terms and conditions

- Guarantee only valid for products bought direct from Abcam or one of our authorized distributors