

## Product datasheet

# Recombinant Gingipain R1 protein (His tag) ab225982

[1 References](#) [3 Images](#)

### Description

<b>Product name</b>	Recombinant Gingipain R1 protein (His tag)
<b>Purity</b>	> 90 % SDS-PAGE.
<b>Expression system</b>	Yeast
<b>Accession</b>	<a href="#">P28784</a>
<b>Protein length</b>	Protein fragment
<b>Animal free</b>	No
<b>Nature</b>	Recombinant
<b>Species</b>	Porphyromonas gingivalis
<b>Sequence</b>	<p>YTPVEEKQNGRMVAVAKKYEGDIKDFVDWKNQRGLRTEV            KVAEDIASPV            TANAIQQFVKQEYEKEGNDLTYVLLVGDHKDIPAKITPGIKS            DQVYGQIV            GNDHYNEVFIGRFSCESKEDLKTQIDRTIHYERNITTEDKWL            GQALCIAS            AEGGPSADNGESDIQHENVIANLLTQYGYTKIHKCYDPGVTP            KNIIDAFN            GGISLVNYTGHGSETAWGTSHFGTTHVKQLTNSNQLPFIFD            VACVNGDFL            FSMPCFAEALMRAQKD GKPTGTVAIIASTINQSWASPMRG            QDEMNEILCE            KHPNNIKRTFGGVTMNGMFAMVEKYKKDGEKMLDTWTVF            GDPSLLVRTL            PTKMQVTAPAQINLTDASVNVSCDYNGAIATISANGKMFG            SAVVENGAT            INLTGLTNESTLTLTVVGYNKETVIKTINTNGEPNPYQPVSNL            TATTQQQ            KVTWKWDAPSTKTNATTNTARSVDGIRELVLLSVSDAPEL            LRS</p>
<b>Predicted molecular weight</b>	56 kDa including tags
<b>Amino acids</b>	228 to 720
<b>Tags</b>	His tag N-Terminus

## Specifications

---

Our [Abpromise guarantee](#) covers the use of **ab225982** in the following tested applications.

The application notes include recommended starting dilutions; optimal dilutions/concentrations should be determined by the end user.

<b>Applications</b>	SDS-PAGE
	Mass Spectrometry
<b>Mass spectrometry</b>	LC-MS/MS
<b>Form</b>	Liquid

## Preparation and Storage

---

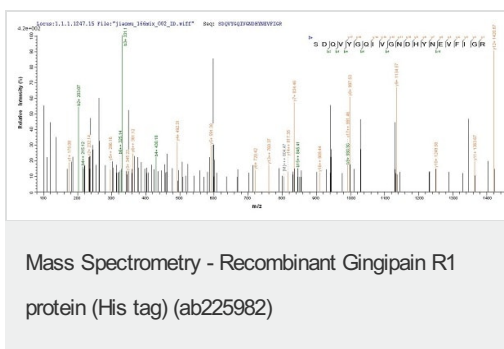
**Stability and Storage** Shipped at 4°C. Upon delivery aliquot. Store at -20°C or -80°C. Avoid freeze / thaw cycle.  
Constituents: 50% Glycerol (glycerin, glycerine), Tris buffer

## Images

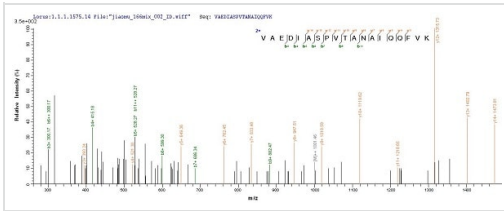
---



(Tris-Glycine gel) Discontinuous SDS-PAGE (reduced) analysis of ab225982 with 5% enrichment gel and 15% separation gel.



Based on the SEQUEST from database of Yeast host and target protein, the LC-MS/MS analysis result of ab225982 could indicate that this peptide derived from Yeast-expressed *Porphyromonas gingivalis* Gingipain R1.



Based on the SEQUEST from database of Yeast host and target protein, the LC-MS/MS analysis result of ab225982 could indicate that this peptide derived from Yeast-expressed Porphyromonas gingivalis Gingipain R1.

Mass Spectrometry - Recombinant Gingipain R1 protein (His tag) (ab225982)

**Please note:** All products are "FOR RESEARCH USE ONLY. NOT FOR USE IN DIAGNOSTIC PROCEDURES"

### Our Abpromise to you: Quality guaranteed and expert technical support

- Replacement or refund for products not performing as stated on the datasheet
- Valid for 12 months from date of delivery
- Response to your inquiry within 24 hours
- We provide support in Chinese, English, French, German, Japanese and Spanish
- Extensive multi-media technical resources to help you
- We investigate all quality concerns to ensure our products perform to the highest standards

If the product does not perform as described on this datasheet, we will offer a refund or replacement. For full details of the Abpromise, please visit <https://www.abcam.com/abpromise> or contact our technical team.

### Terms and conditions

- Guarantee only valid for products bought direct from Abcam or one of our authorized distributors