

Product datasheet

Recombinant Human ABCA8 protein ab160956

1 Image

Overview

Product name	Recombinant Human ABCA8 protein
Protein length	Full length protein

Description

Nature	Recombinant
Source	Wheat germ
Amino Acid Sequence	
Species	Human
Sequence	MRKRKISVCQQTWALLCKNFLKKWRMKRESLMEWLN SLLLLLCLYYPHS HQVNDFSSLLTMDLGRVDTFNESRFSVVYTPVTNTTQ QIMNKVASTPFLA GKEVLGLPDEESIKEFTANYPEEIVRVTFNTNTYSYHLKF LLGHGMPAKKE HKDHTAHCYETNEDVYCEVSVFWKEGFVALQAAINAAI IEITTNHSVMEE LMSVTGKNMKMHSFIGQSGVITDLYLFSCIISFSSFIYA SVNVTRERKR MKALMTMMGLRDSAFW
Amino acids	1 to 266
Tags	GST tag N-Terminus

Specifications

Our [Abpromise guarantee](#) covers the use of **ab160956** in the following tested applications.

The application notes include recommended starting dilutions; optimal dilutions/concentrations should be determined by the end user.

Applications	ELISA Western blot
Form	Liquid
Additional notes	Protein concentration is above or equal to 0.05 mg/ml.

Preparation and Storage

Stability and Storage

Shipped on dry ice. Upon delivery aliquot and store at -80°C. Avoid freeze / thaw cycles.

pH: 8.00

Constituents: 0.31% Glutathione, 0.79% Tris HCl

General Info

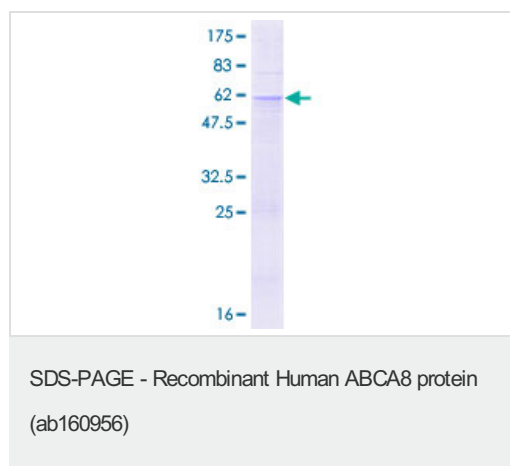
Relevance

ABCA8 is a member of the superfamily of ATP binding cassette (ABC) transporters. ABC proteins transport various molecules across extra and intracellular membranes. ABC genes are divided into seven distinct subfamilies (ABC1, MDR/TAP, MRP, ALD, OABP, GCN20, White). This protein is a member of the ABC1 subfamily. Members of the ABC1 subfamily comprise the only major ABC subfamily found exclusively in multicellular eukaryotes. The function of this protein has not yet been determined.

Cellular localization

Cell membrane; Multi pass membrane protein

Images



ab160956 on a 12.5% SDS-PAGE stained with Coomassie Blue.

Please note: All products are "FOR RESEARCH USE ONLY. NOT FOR USE IN DIAGNOSTIC PROCEDURES"

Our Abpromise to you: Quality guaranteed and expert technical support

- Replacement or refund for products not performing as stated on the datasheet
- Valid for 12 months from date of delivery
- Response to your inquiry within 24 hours
- We provide support in Chinese, English, French, German, Japanese and Spanish
- Extensive multi-media technical resources to help you
- We investigate all quality concerns to ensure our products perform to the highest standards

If the product does not perform as described on this datasheet, we will offer a refund or replacement. For full details of the Abpromise, please visit <https://www.abcam.com/abpromise> or contact our technical team.

Terms and conditions

- Guarantee only valid for products bought direct from Abcam or one of our authorized distributors