

## Product datasheet

# Recombinant Human ABHD4 protein ab163744

1 Image

### Overview

<b>Product name</b>	Recombinant Human ABHD4 protein
<b>Protein length</b>	Full length protein

### Description

<b>Nature</b>	Recombinant
<b>Source</b>	Wheat germ
<b>Amino Acid Sequence</b>	
<b>Species</b>	Human
<b>Sequence</b>	<p>MADDLEQQSQGWLSSWLPTWRPTSMSQLKNVEARIL            QCLQNKFLARYVSL            PNQNKIWTVTVSPEQNDRTPLVMVHGFGGGVGLWILN            MDSLSARRTLHTF            DLLGFGRSSRPAFPRDPEGAEDFVTSIETWRETMGI            PSMILLGHSLGGF            LATSYSIKYPDRVKHLILVDPWGFPLRPTNPSEIRAPPA            WVKAVASVLGR            SNPLAVLRVAGPWGPGLVQFRPDFKRKFADFFEDD            TISEYIHCNAQNP            SGETAFKAMMESFGWARRPMLERIHILIRKDVPTMIYG            SDTWIDTSTGKK            VKMQRPDSYVRDMEIKGASHHVVYADQPHIFNAVVEEIC            DSVD</p>
<b>Amino acids</b>	1 to 342
<b>Tags</b>	proprietary tag N-Terminus

### Specifications

Our [Abpromise guarantee](#) covers the use of **ab163744** in the following tested applications.

The application notes include recommended starting dilutions; optimal dilutions/concentrations should be determined by the end user.

<b>Applications</b>	ELISA Western blot
<b>Form</b>	Liquid

## Additional notes

Protein concentration is above or equal to 0.05 mg/ml.

## Preparation and Storage

### Stability and Storage

Shipped on dry ice. Upon delivery aliquot and store at -80°C. Avoid freeze / thaw cycles.

pH: 8.00

Constituents: 0.31% Glutathione, 0.79% Tris HCl

## General Info

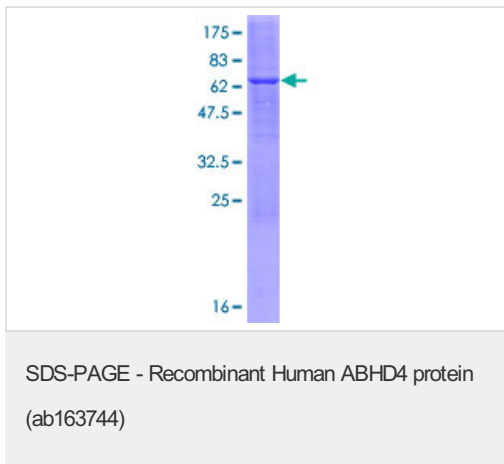
### Function

Lysophospholipase selective for N-acyl phosphatidylethanolamine (NAPE). Contributes to the biosynthesis of N-acyl ethanolamines, including the endocannabinoid anandamide by hydrolyzing the sn-1 and sn-2 acyl chains from N-acyl phosphatidylethanolamine (NAPE) generating glycerophospho-N-acyl ethanolamine (GP-NAE), an intermediate for N-acyl ethanolamine biosynthesis. Hydrolyzes substrates bearing saturated, monounsaturated, polyunsaturated N-acyl chains. Shows no significant activity towards other lysophospholipids, including lysophosphatidylcholine, lysophosphatidylethanolamine and lysophosphatidylserine.

### Sequence similarities

Belongs to the peptidase S33 family. ABHD4/ABHD5 subfamily.

## Images



ab163744 on a 12.5% SDS-PAGE stained with Coomassie Blue.

**Please note:** All products are "FOR RESEARCH USE ONLY AND ARE NOT INTENDED FOR DIAGNOSTIC OR THERAPEUTIC USE"

## Our Abpromise to you: Quality guaranteed and expert technical support

- Replacement or refund for products not performing as stated on the datasheet
- Valid for 12 months from date of delivery
- Response to your inquiry within 24 hours
- We provide support in Chinese, English, French, German, Japanese and Spanish
- Extensive multi-media technical resources to help you
- We investigate all quality concerns to ensure our products perform to the highest standards

If the product does not perform as described on this datasheet, we will offer a refund or replacement. For full details of the Abpromise, please visit <https://www.abcam.com/abpromise> or contact our technical team.

### **Terms and conditions**

---

- Guarantee only valid for products bought direct from Abcam or one of our authorized distributors