

Product datasheet

Recombinant Human ACAT1 protein ab137175

1 Image

Description

Product name	Recombinant Human ACAT1 protein
Purity	> 95 % SDS-PAGE. ab137175 is purified using conventional chromatography techniques.
Expression system	Escherichia coli
Accession	P24752
Protein length	Full length protein
Animal free	No
Nature	Recombinant
Species	Human
Sequence	<p>MGSSHHHHHH SSGLVPRGSH MGSVSKPTLK EVVIVSATRT PIGSFLGSLs LLPATKLGSI AIQGAIEKAG IPKEEVKEAY MGNVLQGGEG QAPTRQAVLG AGLPISTPCT TINKVCASGM KAIMMASQSL MCGHQDVMVA GGMESMSNVP YVMNRGSTPY GGVKLEDLIV KDGLTDVYNK IHMGSCAENT AKKLNARNE QDAYAINSYT RSKAAWEAGK FGNEVIPVTV TVKGQPDVVV KEDEEYKRVD FSKVPKLKTV FQKENGTVTA ANASTLNDGA AALVLMTADA AKRLNVTPLA RIVAFADA AV EPIDFPIAPV YAASMVLKDV GLKKEDIAMW EVNEAFSLVV LANIKMLEID PQKVNINGGA VSLGHPIGMS GARIVGHLTH ALKQGEYGLA SICNGGGGAS AMLIQKL</p>
Predicted molecular weight	44 kDa including tags
Amino acids	34 to 427
Tags	His tag N-Terminus

Specifications

Our [Abpromise guarantee](#) covers the use of **ab137175** in the following tested applications.

The application notes include recommended starting dilutions; optimal dilutions/concentrations should be determined by the end user.

Applications	SDS-PAGE
	Mass Spectrometry

Mass spectrometry	MALDI-TOF
Form	Liquid

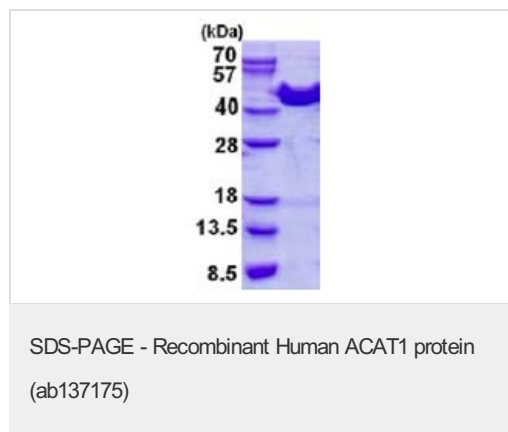
Preparation and Storage

Stability and Storage	Shipped at 4°C. Store at +4°C short term (1-2 weeks). Upon delivery aliquot. Store at -20°C or -80°C. Avoid freeze / thaw cycle. pH: 7.50 Constituents: 0.02% DTT, 0.32% Tris HCl, 10% Glycerol, 0.58% Sodium chloride
------------------------------	--

General Info

Function	Plays a major role in ketone body metabolism.
Involvement in disease	Defects in ACAT1 are a cause of 3-ketothiolase deficiency (3KTD) [MIM:203750]; also known as alpha-methylacetoaceticaciduria. 3KTD is an inborn error of isoleucine catabolism characterized by intermittent ketoacidotic attacks associated with unconsciousness. Some patients die during an attack or are mentally retarded. Urinary excretion of 2-methyl-3-hydroxybutyric acid, 2-methylacetoacetic acid, triglylglycine, butanone is increased. It seems likely that the severity of this disease correlates better with the environmental or acquired factors than with the ACAT1 genotype.
Sequence similarities	Belongs to the thiolase family.
Cellular localization	Mitochondrion.

Images



15% SDS-PAGE analysis of ab137175 (3µg)

Please note: All products are "FOR RESEARCH USE ONLY. NOT FOR USE IN DIAGNOSTIC PROCEDURES"

Our Abpromise to you: Quality guaranteed and expert technical support

- Replacement or refund for products not performing as stated on the datasheet
- Valid for 12 months from date of delivery
- Response to your inquiry within 24 hours

- We provide support in Chinese, English, French, German, Japanese and Spanish
- Extensive multi-media technical resources to help you
- We investigate all quality concerns to ensure our products perform to the highest standards

If the product does not perform as described on this datasheet, we will offer a refund or replacement. For full details of the Abpromise, please visit <https://www.abcam.com/abpromise> or contact our technical team.

Terms and conditions

- Guarantee only valid for products bought direct from Abcam or one of our authorized distributors