

Product datasheet

Recombinant Human ALS protein ab152475

1 Image

Description

Product name	Recombinant Human ALS protein
Expression system	Wheat germ
Accession	P35858
Protein length	Full length protein
Animal free	No
Nature	Recombinant
Species	Human

Sequence

```

MALRKGGALALALLLSWVALGPRSLEGADPGTPGEAEGP
ACPAACVCSYD
DDADELSVFCSSRNLTRLPDGVPPGGTQALWLDGNNLSS
VPPAAFQNLSSL
GFLNLQGGQLGSLEPQALLGLENLCHLHLERNQLRSLALG
TFAHTPALAS
LGLSNNRSLRLEDGLFEGLSLWDLNLGWNSLAVLPDAA
FRGLGSLRELV
LAGNRLAYLQPALFSGLAELRELDLSRNALRAIKANVFVQL
PRLQKLYLD
RNLIAAVAPGAFGLKALRWLDLSHNRVAGLLEDTFPGLL
GLRVLRLSHN
AIASLRPRTFKDLHFLEELQLGHNIRIRQLAERSFEGLGQLE
VLTLDHNQL
QEVKAGAFGLGTNMAVMNLSGNCLRNLPEQVFRGLGKLH
SLHLEGSCCLGR
IRPHTFTGLSGLRRLFLKDNGLVGIEEQSLWGLAELELDL
TSNQLTHLP
HRLFQGLGKLEYLLLSRNRLAELPADALGPLQRAFWLDVVS
HNRLEALPNS
LLAPLGRRLRYLSLRNNSLRFTFPQPPGLERLWLEGNPWD
CGCPLKALRDF
ALQNPSAVPRFVQAICEGDDCQPPAYTYNNITCASPEEVV
GLDLRDLSEA HFAPC

```

Predicted molecular weight	93 kDa including tags
Amino acids	1 to 605

Specifications

Our [Abpromise guarantee](#) covers the use of **ab152475** in the following tested applications.

The application notes include recommended starting dilutions; optimal dilutions/concentrations should be determined by the end user.

Applications	SDS-PAGE Western blot ELISA
Form	Liquid
Additional notes	

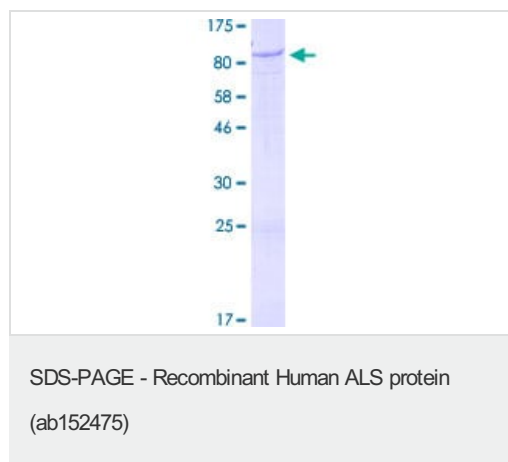
Preparation and Storage

Stability and Storage	Shipped on dry ice. Upon delivery aliquot and store at -80°C. Avoid freeze / thaw cycles. pH: 8.00 Constituents: 0.31% Glutathione, 0.79% Tris HCl
------------------------------	--

General Info

Function	Involved in protein-protein interactions that result in protein complexes, receptor-ligand binding or cell adhesion.
Tissue specificity	Plasma.
Sequence similarities	Contains 19 LRR (leucine-rich) repeats. Contains 1 LRRCT domain. Contains 1 LRRNT domain.
Cellular localization	Secreted > extracellular space.

Images



12.5% SDS-PAGE analysis of ab152475 stained with Coomassie Blue.

Please note: All products are "FOR RESEARCH USE ONLY. NOT FOR USE IN DIAGNOSTIC PROCEDURES"

Our Abpromise to you: Quality guaranteed and expert technical support

- Replacement or refund for products not performing as stated on the datasheet
- Valid for 12 months from date of delivery
- Response to your inquiry within 24 hours

- We provide support in Chinese, English, French, German, Japanese and Spanish
- Extensive multi-media technical resources to help you
- We investigate all quality concerns to ensure our products perform to the highest standards

If the product does not perform as described on this datasheet, we will offer a refund or replacement. For full details of the Abpromise, please visit <https://www.abcam.com/abpromise> or contact our technical team.

Terms and conditions

- Guarantee only valid for products bought direct from Abcam or one of our authorized distributors