

Product datasheet

Recombinant Human ALS2CR2 protein ab163094

1 Image

Overview

<b>Product name</b>	Recombinant Human ALS2CR2 protein
<b>Protein length</b>	Protein fragment

Description

<b>Nature</b>	Recombinant
<b>Source</b>	Wheat germ
<b>Amino Acid Sequence</b>	
<b>Species</b>	Human
<b>Sequence</b>	MSLLDCFCTSRQTQVESLRPEKQSETSIHQYLVDEPTLS WSRPSTRASEVL CSTNVSHYELQVEIGRGFDNLTSVHLARHTPTGTLVTIKI TNLEN
<b>Amino acids</b>	1 to 95
<b>Tags</b>	GST tag N-Terminus

Specifications

Our [Abpromise guarantee](#) covers the use of **ab163094** in the following tested applications.

The application notes include recommended starting dilutions; optimal dilutions/concentrations should be determined by the end user.

<b>Applications</b>	ELISA Western blot
<b>Form</b>	Liquid
<b>Additional notes</b>	Protein concentration is above or equal to 0.05 mg/ml.

Preparation and Storage

<b>Stability and Storage</b>	Shipped on dry ice. Upon delivery aliquot and store at -80°C. Avoid freeze / thaw cycles. pH: 8.00 Constituents: 0.31% Glutathione, 0.79% Tris HCl
------------------------------	--

## General Info

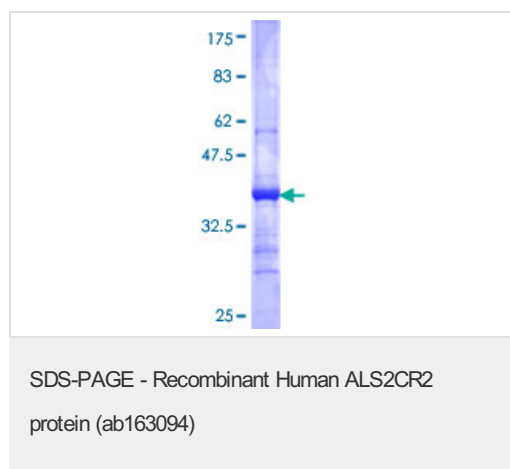
---

<b>Function</b>	Pseudokinase which, in complex with CAB39, binds to and activates STK11. Relocates STK11 from the nucleus to the cytoplasm. Plays an essential role in STK11-mediated G1 cell cycle arrest.
<b>Tissue specificity</b>	Highly expressed in heart, skeletal muscle, testis, liver and colon.
<b>Sequence similarities</b>	Belongs to the protein kinase superfamily. STE Ser/Thr protein kinase family. STE20 subfamily. Contains 1 protein kinase domain.
<b>Domain</b>	The protein kinase domain is predicted to be catalytically inactive.
<b>Cellular localization</b>	Nucleus. Cytoplasm.

---

## Images

---



ab163094 on a 12.5% SDS-PAGE stained with Coomassie Blue.

**Please note:** All products are "FOR RESEARCH USE ONLY AND ARE NOT INTENDED FOR DIAGNOSTIC OR THERAPEUTIC USE"

## Our Abpromise to you: Quality guaranteed and expert technical support

---

- Replacement or refund for products not performing as stated on the datasheet
- Valid for 12 months from date of delivery
- Response to your inquiry within 24 hours
- We provide support in Chinese, English, French, German, Japanese and Spanish
- Extensive multi-media technical resources to help you
- We investigate all quality concerns to ensure our products perform to the highest standards

If the product does not perform as described on this datasheet, we will offer a refund or replacement. For full details of the Abpromise, please visit <https://www.abcam.com/abpromise> or contact our technical team.

## Terms and conditions

---

- Guarantee only valid for products bought direct from Abcam or one of our authorized distributors