

Product datasheet

Recombinant Human AMBN protein ab116972

1 Image

Description

Product name	Recombinant Human AMBN protein
Expression system	Wheat germ
Accession	Q9NP70
Protein length	Full length protein
Animal free	No
Nature	Recombinant
Species	Human
Sequence	<p>MSASKIPLFKMKDLILCLLEMSFAVPFFPQQSGTPGMAS LSLETMRQL GSLQRLNTLSQYSRYGFGKSFNSLWMHGLLPPHSSLPWM RPREHETQQYE YSLPVHPPPLPSQPSPKPPQGLKPFQSAATTNQATAL KEALQPPIHL GHLPLQEGELPLVQQQVAPSDKPPKPELPGVDFADPQG PSLPGMDFPDPQ GPSLPGLDFADPQGSTIFQIARLISHGMPQNKQSPLYPG MLYVPFGANQ LNAPARLGIMSSEEVAGGREDPMAYGAMFPGFGGMRPG FEGMPHNPAMGG DFTLEFDSPVAATKGPENEEGGAQGSPMPEANPDNLEN PAFLTELEPAPH AGLLALPKDDIPGLPRSPSGKMKGLPSVTPAAADPLMTP ELADVYRTYDA DMTTSVDFQEEATMDTTMAPNSLQTSMPGNKAQEP HDAWHFQEP</p>
Predicted molecular weight	75 kDa including tags
Amino acids	1 to 447

Specifications

Our [Abpromise guarantee](#) covers the use of **ab116972** in the following tested applications.

The application notes include recommended starting dilutions; optimal dilutions/concentrations should be determined by the end user.

Applications Western blot

	SDS-PAGE
	ELISA
Form	Liquid

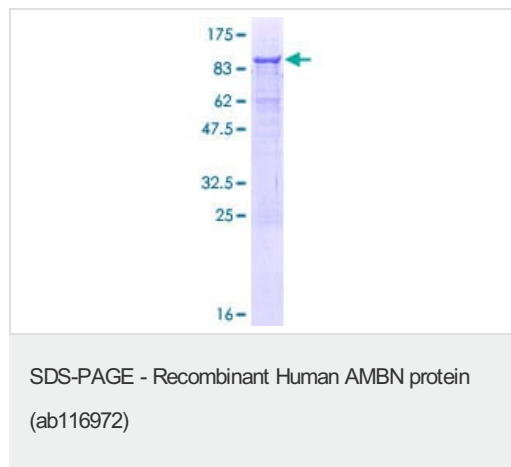
Preparation and Storage

Stability and Storage	Shipped on dry ice. Upon delivery aliquot and store at -80°C. Avoid freeze / thaw cycles. pH: 8.00 Constituents: 0.3% Glutathione, 0.79% Tris HCl
------------------------------	---

General Info

Function	Involved in the mineralization and structural organization of enamel.
Tissue specificity	Ameloblast-specific. Located at the Tomes processes of secretory ameloblasts and in the sheath space between rod-interrod enamel.
Sequence similarities	Belongs to the ameloblastin family.
Cellular localization	Secreted > extracellular space > extracellular matrix.

Images



12.5% SDS-PAGE showing ab116972 at approximately 75.25kDa. Stained with Coomassie Blue.

Please note: All products are "FOR RESEARCH USE ONLY. NOT FOR USE IN DIAGNOSTIC PROCEDURES"

Our Abpromise to you: Quality guaranteed and expert technical support

- Replacement or refund for products not performing as stated on the datasheet
- Valid for 12 months from date of delivery
- Response to your inquiry within 24 hours
- We provide support in Chinese, English, French, German, Japanese and Spanish
- Extensive multi-media technical resources to help you
- We investigate all quality concerns to ensure our products perform to the highest standards

If the product does not perform as described on this datasheet, we will offer a refund or replacement. For full details of the Abpromise, please visit <https://www.abcam.com/abpromise> or contact our technical team.

Terms and conditions

- Guarantee only valid for products bought direct from Abcam or one of our authorized distributors