

Product datasheet

Recombinant Human AP-B protein ab132648

1 Image

Description

<b>Product name</b>	Recombinant Human AP-B protein
<b>Expression system</b>	Wheat germ
<b>Accession</b>	<a href="#">Q9H4A4</a>
<b>Protein length</b>	Full length protein
<b>Animal free</b>	No
<b>Nature</b>	Recombinant
<b>Species</b>	Human

**Sequence**

```

MASGEHSPGSGAARRPLHSAQAVDVASASNFRAFEL
LHLHLDLRAEFGPP
GPGAGSRGLSGTAVLDLRCLEPEGAAELRLDHPCL
EVTAAALRRERPGS
EPPAEPVSFYTQPFSHYGQALCVSFPQPCRAAERL
QVLLTYRVGEGPGV
CWLAPEQTAGKKKPFVYTQGGQAVLNRAFFPCFDTPA
VKYKYSALIEVPDG
FTAVMSASTWEKRGPNKFFFQMCQPIPSYIALAIGDL
VSAEVGPRSRVW
AEPCLIDAAKEEYNGVIEEFLATGEKLFGPYVWGRYDL
LFMPPSFPGGM
ENPCLTFVTPCLLAGDRSLADVIIHEISHSWFGNLVTNA
NWGEFWLNEGF
TMYAQRRISTILFGAAYTCLEAATGRALLRQHMDITGEE
NPLNKL RVKIE
PGVDPDDTYNETPYEKGFVSYLAHLVGDQDQFDS
FLKAYWHEFKFRSI
LADDFLDFYLEYFPELKKKRVDIIPGFEDRWLNTPGW
PPYLPDLSPGDS
LMKPAEELAQLWAAEELDMKAIEAVAISPWKTYQLVYF
LDKILQKSPLPP
GNVKKLGDTYPSISNARNAELRLRWGQIVLKNHQED
FWKVKEFLHNQGK
QKYTLPLYHAMMGSEVAQTLAKETFASTASQLHSNV
VNYVQQVAPKGS

```

**Predicted molecular weight** 99 kDa including tags

## Specifications

---

Our [Abpromise guarantee](#) covers the use of **ab132648** in the following tested applications.

The application notes include recommended starting dilutions; optimal dilutions/concentrations should be determined by the end user.

<b>Applications</b>	ELISA SDS-PAGE Western blot
<b>Form</b>	Liquid
<b>Additional notes</b>	Protein concentration is above or equal to 0.05 mg/ml. Best used within three months from the date of receipt. Previously labelled as RNPEP.

## Preparation and Storage

---

<b>Stability and Storage</b>	Shipped on dry ice. Upon delivery aliquot and store at -80°C. Avoid freeze / thaw cycles. pH: 8.00 Constituents: 0.31% Glutathione, 0.79% Tris HCl
------------------------------	--

## General Info

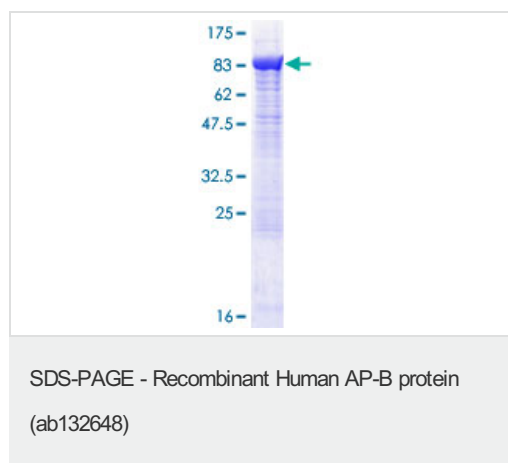
---

<b>Function</b>	Exopeptidase which selectively removes arginine and/or lysine residues from the N-terminus of several peptide substrates including Arg(0)-Leu-enkephalin, Arg(0)-Met-enkephalin and Arg(-1)-Lys(0)-somatostatin-14. Can hydrolyze leukotriene A4 (LTA-4) into leukotriene B4 (LTB-4).
<b>Sequence similarities</b>	Belongs to the peptidase M1 family.
<b>Cellular localization</b>	Secreted.

---

## Images

---



12.5% SDS-PAGE analysis of ab132648 stained with Coomassie Blue.

## **Our Abpromise to you: Quality guaranteed and expert technical support**

---

- Replacement or refund for products not performing as stated on the datasheet
- Valid for 12 months from date of delivery
- Response to your inquiry within 24 hours
  
- We provide support in Chinese, English, French, German, Japanese and Spanish
- Extensive multi-media technical resources to help you
- We investigate all quality concerns to ensure our products perform to the highest standards

If the product does not perform as described on this datasheet, we will offer a refund or replacement. For full details of the Abpromise, please visit <https://www.abcam.com/abpromise> or contact our technical team.

## **Terms and conditions**

---

- Guarantee only valid for products bought direct from Abcam or one of our authorized distributors