

Product datasheet

Recombinant Human Apc1 protein ab163855

1 Image

Overview

Product name Recombinant Human Apc1 protein
Protein length Protein fragment

Description

Nature Recombinant
Source Wheat germ
Amino Acid Sequence
Species Human
Sequence NSEFLPVVKCTIDNTLDQWLQVGGDMCVHAYLSGQPL
 EESQLSMLACFLV
 YHSVPAPQHLPPIGLEGSTSF AELLFKFKQLKMPVRAL
 LRLAPLLLGNPQ PMVM
Amino acids 1841 to 1944
Tags GST tag N-Terminus

Specifications

Our [Abpromise guarantee](#) covers the use of **ab163855** in the following tested applications. The application notes include recommended starting dilutions; optimal dilutions/concentrations should be determined by the end user.

Applications Western blot
 ELISA
Form Liquid
Additional notes Protein concentration is above or equal to 0.05 mg/ml.

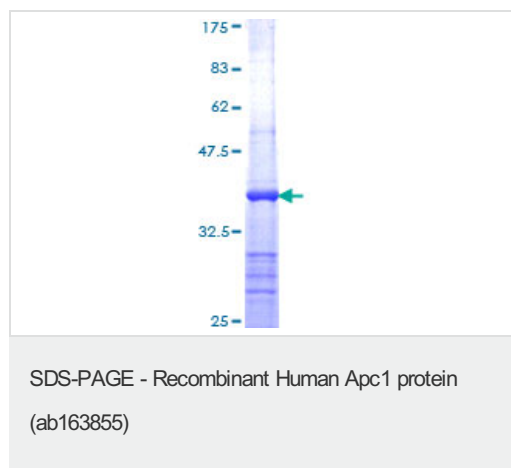
Preparation and Storage

Stability and Storage Shipped on dry ice. Upon delivery aliquot and store at -80°C. Avoid freeze / thaw cycles.
 pH: 8.00
 Constituents: 0.31% Glutathione, 0.79% Tris HCl

General Info

Function	Component of the anaphase promoting complex/cyclosome (APC/C), a cell cycle-regulated E3 ubiquitin ligase that controls progression through mitosis and the G1 phase of the cell cycle. The APC/C complex acts by mediating ubiquitination and subsequent degradation of target proteins: it mainly mediates the formation of 'Lys-11'-linked polyubiquitin chains and, to a lower extent, the formation of 'Lys-48'- and 'Lys-63'-linked polyubiquitin chains.
Pathway	Protein modification; protein ubiquitination.
Sequence similarities	Belongs to the APC1 family. Contains 4 PC repeats.
Post-translational modifications	Phosphorylated. Phosphorylation on Ser-355 occurs specifically during mitosis.

Images



ab163855 on a 12.5% SDS-PAGE stained with Coomassie Blue.

Please note: All products are "FOR RESEARCH USE ONLY AND ARE NOT INTENDED FOR DIAGNOSTIC OR THERAPEUTIC USE"

Our Abpromise to you: Quality guaranteed and expert technical support

- Replacement or refund for products not performing as stated on the datasheet
- Valid for 12 months from date of delivery
- Response to your inquiry within 24 hours

- We provide support in Chinese, English, French, German, Japanese and Spanish
- Extensive multi-media technical resources to help you
- We investigate all quality concerns to ensure our products perform to the highest standards

If the product does not perform as described on this datasheet, we will offer a refund or replacement. For full details of the Abpromise, please visit <https://www.abcam.com/abpromise> or contact our technical team.

Terms and conditions

- Guarantee only valid for products bought direct from Abcam or one of our authorized distributors