

Product datasheet

Recombinant Human APEG1 protein ab160930

1 Image

Overview

Product name	Recombinant Human APEG1 protein
Protein length	Protein fragment

Description

Nature	Recombinant
Source	Wheat germ
Amino Acid Sequence	
Species	Human
Sequence	MKPSPSQNRRSSDTGSKAPPTFKVSLMDQSVREGQ DVIMSIRVQGEPKPV VSWLRNRQPVRPDQRRFAEEAEGGLCRLRILAAERG DAGFYTCKAVNEYG
Amino acids	1 to 100
Tags	GST tag N-Terminus

Specifications

Our [Abpromise guarantee](#) covers the use of **ab160930** in the following tested applications.

The application notes include recommended starting dilutions; optimal dilutions/concentrations should be determined by the end user.

Applications	ELISA Western blot
Form	Liquid
Additional notes	Protein concentration is above or equal to 0.05 mg/ml.

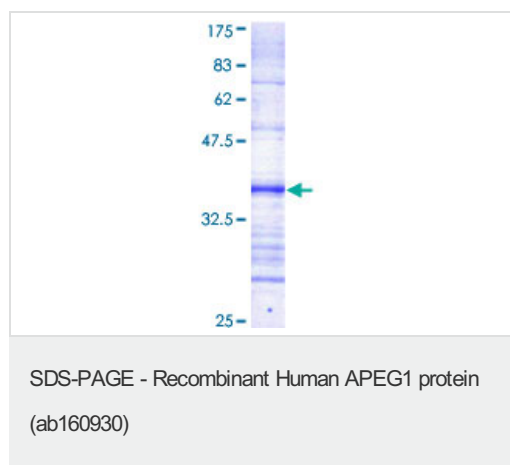
Preparation and Storage

Stability and Storage	Shipped on dry ice. Upon delivery aliquot and store at -80°C. Avoid freeze / thaw cycles. pH: 8.00 Constituents: 0.31% Glutathione, 0.79% Tris HCl
------------------------------	--

General Info

Function	Isoform 3 may have a role in regulating the growth and differentiation of arterial smooth muscle cells.
Tissue specificity	Isoform 1 is preferentially expressed in striated muscle. Non-kinase form such as isoform 3 is predominantly expressed in the aorta. Isoform 3 appears to be expressed only in highly differentiated ASMC in normal vessel walls and down-regulated in dedifferentiated ASMC in vivo. In response to vascular injuries ASMC dedifferentiate and change from a quiescent and contractile phenotype to a proliferative and synthetic phenotype. This proliferation of vascular smooth muscle cells is one of the most prominent features of atherosclerosis.
Sequence similarities	Belongs to the protein kinase superfamily. CAMK Ser/Thr protein kinase family. Contains 2 fibronectin type-III domains. Contains 9 Ig-like (immunoglobulin-like) domains. Contains 2 protein kinase domains.
Post-translational modifications	May be autophosphorylated. Phosphorylated upon DNA damage, probably by ATM or ATR.
Cellular localization	Nucleus.

Images



ab160930 on a 12.5% SDS-PAGE stained with Coomassie Blue.

Please note: All products are "FOR RESEARCH USE ONLY AND ARE NOT INTENDED FOR DIAGNOSTIC OR THERAPEUTIC USE"

Our Abpromise to you: Quality guaranteed and expert technical support

- Replacement or refund for products not performing as stated on the datasheet
- Valid for 12 months from date of delivery
- Response to your inquiry within 24 hours
- We provide support in Chinese, English, French, German, Japanese and Spanish
- Extensive multi-media technical resources to help you
- We investigate all quality concerns to ensure our products perform to the highest standards

If the product does not perform as described on this datasheet, we will offer a refund or replacement. For full details of the Abpromise, please visit <https://www.abcam.com/abpromise> or contact our technical team.

Terms and conditions

- Guarantee only valid for products bought direct from Abcam or one of our authorized distributors