

Product datasheet

Recombinant Human ARHGEF10 protein ab160592

1 Image

Overview

Product name	Recombinant Human ARHGEF10 protein
Protein length	Full length protein

Description

Nature	Recombinant
Source	Wheat germ
Amino Acid Sequence	
Species	Human
Sequence	<p>MENPEEAMDDVPRENSDSEPDEMIYDDVENGDEGG NSSLEYGWSSEFE SYEEQSDSECKNGIPRSFLRSNHKKQMQLVKAARD GTKDGLERTRAAVK RGRSFIRTKSLIAQDHRSSLEEEQNLFIDVDCKHPEAIL TPMPEGLSQQQ VVRRYLGSVVDSEKNYVDALKRILEQYKPLSEMEPK VLSERKCLKTVFY RVKEILQCHSLFQIALASRVSEWDSVEMIGVVFVASF KSMVLDAYSEYV NNFSTAVAVLKKTCATKPAFLKQEQEASPDRTTLY SLMMKPIQRFPQ FILLQDMLKNTSKGHPDRLPLQMALTELETLAEKLE RKRADADQRCEVK QIAKAINERYLNKVERGFLQLYSKIIFALC</p>
Amino acids	1 to 380
Tags	proprietary tag N-Terminus

Specifications

Our [Abpromise guarantee](#) covers the use of **ab160592** in the following tested applications.

The application notes include recommended starting dilutions; optimal dilutions/concentrations should be determined by the end user.

Applications	Western blot
	ELISA

Form	Liquid
Additional notes	Protein concentration is above or equal to 0.05 mg/ml.

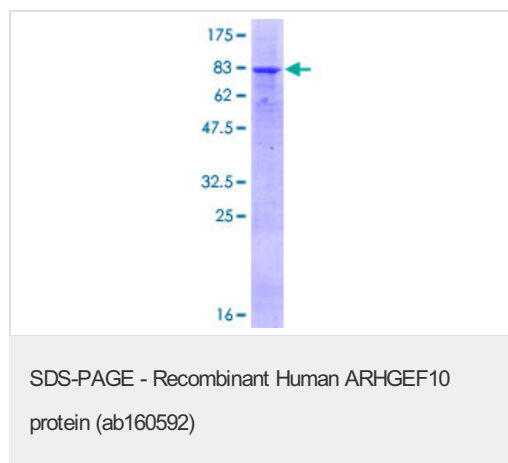
Preparation and Storage

Stability and Storage	Shipped on dry ice. Upon delivery aliquot and store at -80°C. Avoid freeze / thaw cycles. pH: 8.00 Constituents: 0.31% Glutathione, 0.79% Tris HCl
------------------------------	--

General Info

Function	May play a role in developmental myelination of peripheral nerves.
Involvement in disease	Defects in ARHGEF10 are the cause of slowed nerve conduction velocity (SNCV) [MIM:608236]. Affected individuals present a reduction in nerve conduction velocities without any clinical signs of peripheral or central nervous system dysfunction. SNCV inheritance is autosomal dominant.
Sequence similarities	Contains 1 DH (DBL-homology) domain.

Images



ab160592 on a 12.5% SDS-PAGE stained with Coomassie Blue.

Please note: All products are "FOR RESEARCH USE ONLY AND ARE NOT INTENDED FOR DIAGNOSTIC OR THERAPEUTIC USE"

Our Abpromise to you: Quality guaranteed and expert technical support

- Replacement or refund for products not performing as stated on the datasheet
- Valid for 12 months from date of delivery
- Response to your inquiry within 24 hours
- We provide support in Chinese, English, French, German, Japanese and Spanish
- Extensive multi-media technical resources to help you
- We investigate all quality concerns to ensure our products perform to the highest standards

If the product does not perform as described on this datasheet, we will offer a refund or replacement. For full details of the Abpromise,

please visit <https://www.abcam.com/abpromise> or contact our technical team.

Terms and conditions

- Guarantee only valid for products bought direct from Abcam or one of our authorized distributors