

Product datasheet

Recombinant Human ARHGEF6 protein ab160497

1 Image

Overview

Product name	Recombinant Human ARHGEF6 protein
Protein length	Full length protein

Description

Nature	Recombinant
Source	Wheat germ
Amino Acid Sequence	
Species	Human

Sequence	<p>MNPEEQIVTWLISLGVLESPKKTICDPEEFLKSSLKNG VVLCKLINRLMP GSVEKFCLDPQTEADCINNINDFLKGCATLQVEIFDPD DLYSGVNFASKVL STLLAVNKATEDQLSERPCGRSSSLSAANTSQTNPQG AVSSTVSGLQRQS KTVEMTENGSHQLVKARFNFKQTNEDELSVCKGDIIV TRVEEGGWWE TLNGRTGWFPSNYVREIKSSERPLSPKAVKGFETAPLT KNYYTVVLQNIL DTEKEYAKELQSLLVTYLRPLQSNLSTVEVTSLLGN FEEVCTFQQTLC QALEECSKFPENQHKVGGCLLSLMPHFKSMYLAICA NHPSAVNVLTQHSD ELEQFMENQGASSPGILITTNLSKPFMRLEKYVTLQEQ LERHMEDTHPD HQDILKAMAFKTLMGQCQDLRKRKQLELQILSEPIQAW EGEDIKNLGNV IFMSQVMVQYGACEEKEERYLMLFSNVLIMLSASPRM SGFIYQGKIPIAG TVVTRLDEIEGNDCTFEITGNTVERIVVHCNNNQDFQE WLEQLNRLIRGP ASCSSLSKTSSSSSCSAHSSFSSTGQPRGPLEPPQIIKP WLSLCLRPAPPL RPSAALGYKERMSYILKESKSPKTMKKFLHKRKTERRK PSEEEYVIRKST</p>
-----------------	--

AALEEDAQILKVEAYCTSANFQQGHGSSTRKDSIPQV
LLPEEEKLIIEE
TRSNGQTMEEEKSLVDTVYALKDEVRELKQENKRMKQ
CLEEELKSRRDLE
KLVRRLLKQTDECIRGESSSKTSILP

Amino acids 1 to 776
Tags proprietary tag N-Terminus

Specifications

Our [Abpromise guarantee](#) covers the use of **ab160497** in the following tested applications.

The application notes include recommended starting dilutions; optimal dilutions/concentrations should be determined by the end user.

Applications ELISA
Western blot

Form Liquid

Additional notes Protein concentration is above or equal to 0.05 mg/ml.

Preparation and Storage

Stability and Storage Shipped on dry ice. Upon delivery aliquot and store at -80°C. Avoid freeze / thaw cycles.
pH: 8.00
Constituents: 0.31% Glutathione, 0.79% Tris HCl

General Info

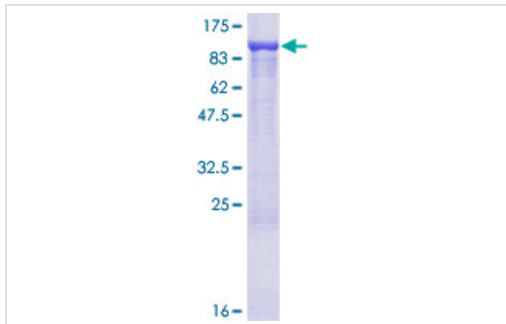
Function Acts as a RAC1 guanine nucleotide exchange factor (GEF).

Tissue specificity Ubiquitous.

Involvement in disease Defects in ARHGEF6 are the cause of mental retardation X-linked type 46 (MRX46) [MIM:300436]. Mental retardation is a mental disorder characterized by significantly sub-average general intellectual functioning associated with impairments in adaptive behavior and manifested during the developmental period. Non-syndromic mental retardation patients do not manifest other clinical signs.

Sequence similarities Contains 1 CH (calponin-homology) domain.
Contains 1 DH (DBL-homology) domain.
Contains 1 PH domain.
Contains 1 SH3 domain.

Images



ab160497 on a 12.5% SDS-PAGE stained with Coomassie Blue.

SDS-PAGE - Recombinant Human ARHGEF6
protein (ab160497)

Please note: All products are "FOR RESEARCH USE ONLY AND ARE NOT INTENDED FOR DIAGNOSTIC OR THERAPEUTIC USE"

Our Abpromise to you: Quality guaranteed and expert technical support

- Replacement or refund for products not performing as stated on the datasheet
- Valid for 12 months from date of delivery
- Response to your inquiry within 24 hours

- We provide support in Chinese, English, French, German, Japanese and Spanish
- Extensive multi-media technical resources to help you
- We investigate all quality concerns to ensure our products perform to the highest standards

If the product does not perform as described on this datasheet, we will offer a refund or replacement. For full details of the Abpromise, please visit <https://www.abcam.com/abpromise> or contact our technical team.

Terms and conditions

- Guarantee only valid for products bought direct from Abcam or one of our authorized distributors