

Product datasheet

Recombinant Human ARL4C protein ab160832

1 Image

Description

<b>Product name</b>	Recombinant Human ARL4C protein	
<b>Expression system</b>	Wheat germ	
<b>Protein length</b>	Full length protein	
<b>Animal free</b>	No	
<b>Nature</b>	Recombinant	
<b>Species</b>	Human	
<b>Sequence</b>	MGNISSNISAFQSLHIVMLGLDSAGKTTVLYRLKFNEFVNT VPTIGFNT KIKLSNGTAKGISCHFWDVGGQEKLRLPLWKSYSRCTDGIY VVDSVDVDR LEEAKTELHKVTKFAENQGTPLLVIANKQDLPKSLPVAEIE KQLALHELI PATTYHVQPACAIIGEGLTEGMDKLYEMILKRRKSLKQKKK R	
<b>Amino acids</b>	1 to 192	
<b>Tags</b>	GST tag N-Terminus	

Specifications

Our [Abpromise guarantee](#) covers the use of **ab160832** in the following tested applications. The application notes include recommended starting dilutions; optimal dilutions/concentrations should be determined by the end user.

<b>Applications</b>	ELISA
	Western blot
<b>Form</b>	Liquid

Additional notes

Preparation and Storage

<b>Stability and Storage</b>	Shipped on dry ice. Upon delivery aliquot and store at -80°C. Avoid freeze / thaw cycles. pH: 8.00
------------------------------	---

Constituents: 0.31% Glutathione, 0.79% Tris HCl

## General Info

### Function

Small GTP-binding protein which cycles between an inactive GDP-bound and an active GTP-bound form, and the rate of cycling is regulated by guanine nucleotide exchange factors (GEF) and GTPase-activating proteins (GAP). GTP-binding protein that does not act as an allosteric activator of the cholera toxin catalytic subunit. May be involved in transport between a perinuclear compartment and the plasma membrane, apparently linked to the ABCA1-mediated cholesterol secretion pathway. Recruits CYTH1, CYTH2, CYTH3 and CYTH4 to the plasma membrane in the GDP-bound form. Regulates the microtubule-dependent intracellular vesicular transport from early endosome to recycling endosome process.

### Tissue specificity

Expressed in several tumor cell lines (at protein level). Expressed in lung, brain, leukocytes and placenta.

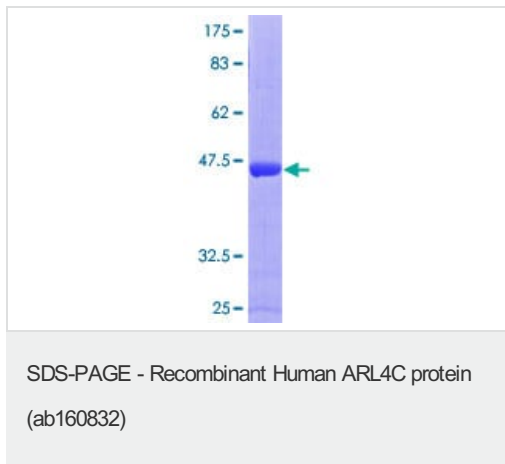
### Sequence similarities

Belongs to the small GTPase superfamily. Arf family.

### Cellular localization

Cell projection > filopodium. Cell membrane. Cytoplasm.

## Images



ab160832 on a 12.5% SDS-PAGE stained with Coomassie Blue.

**Please note:** All products are "FOR RESEARCH USE ONLY. NOT FOR USE IN DIAGNOSTIC PROCEDURES"

## Our Abpromise to you: Quality guaranteed and expert technical support

- Replacement or refund for products not performing as stated on the datasheet
- Valid for 12 months from date of delivery
- Response to your inquiry within 24 hours
- We provide support in Chinese, English, French, German, Japanese and Spanish
- Extensive multi-media technical resources to help you
- We investigate all quality concerns to ensure our products perform to the highest standards

If the product does not perform as described on this datasheet, we will offer a refund or replacement. For full details of the Abpromise, please visit <https://www.abcam.com/abpromise> or contact our technical team.

## Terms and conditions

---

- Guarantee only valid for products bought direct from Abcam or one of our authorized distributors