

Product datasheet

Recombinant human ATAD2 protein ab198131

2 Images

Description

Product name	Recombinant human ATAD2 protein
Biological activity	Assay was performed using an ATAD2 Inhibitor Screening Assay Kit.
Purity	>= 95 % SDS-PAGE.
Expression system	Escherichia coli
Accession	Q6PL18
Protein length	Protein fragment
Animal free	No
Nature	Recombinant
Species	Human
Sequence	<p>MSPILGYWKIKGLVQPTRLLEYLEEKYEEHLYERDEGDK WRNKKFELGL EFPNLPYYIDGDVKLTQSMAIRYADKHNMLGGCPKERAEI SMLEGAVL DIRYGVSRIAYSKDFETLKVDFLSKLPEMLKMFEDRLCHKT YLNGDHVTH PDFMLYDALDVVLYMDPMCLDAFPKLVCFKKRIEAIQIDK YLKSSKYIA WPLQGQWQATFGGGDHPPKSDLEVLFGGPLGSQEEDTFR ELRIFLRNVTHR LAIDKRFRVFTKVPDPDEVPDYVTVIKQPMDLSSVISKIDLH KYLTVKDY LRDIDLICSNALEYNPDRDPGDRLIRHRACALRDTAYAIKE ELDEDFEQ LCEEIQESR</p>
Predicted molecular weight	42 kDa including tags
Amino acids	981 to 1108
Tags	GST tag N-Terminus
Additional sequence information	Bromodomain; NM_014109.

Specifications

Our [Abpromise guarantee](#) covers the use of **ab198131** in the following tested applications.

The application notes include recommended starting dilutions; optimal dilutions/concentrations should be determined by the end user.

Applications	Functional Studies SDS-PAGE
Form	Liquid

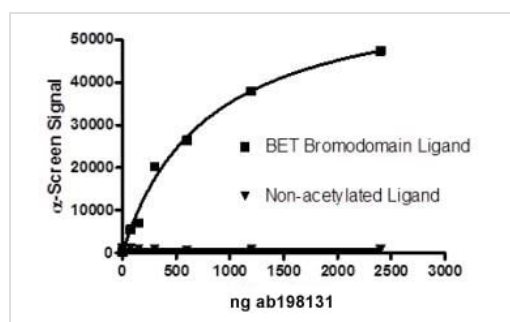
Preparation and Storage

Stability and Storage	Shipped on Dry Ice. Store at -80°C. Avoid freeze / thaw cycle. pH: 8.00 Constituents: 0.71% Tris HCl, 0.72% Sodium chloride, 0.02% Potassium chloride, 10% Glycerol (glycerin, glycerine) This product is an active protein and may elicit a biological response in vivo, handle with caution.
------------------------------	---

General Info

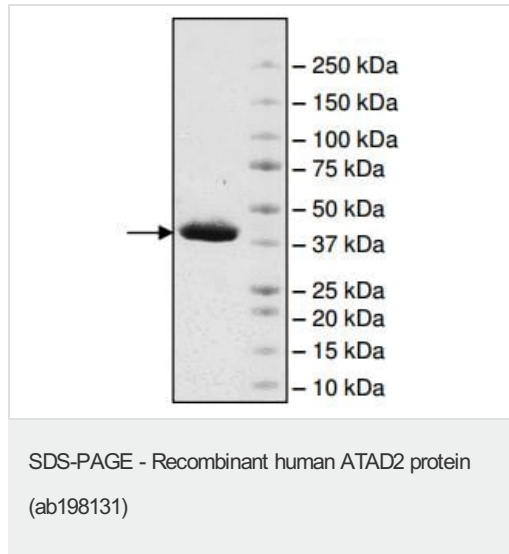
Function	May be a transcriptional coactivator of the nuclear receptor ESR1 required to induce the expression of a subset of estradiol target genes, such as CCND1, MYC and E2F1. May play a role in the recruitment or occupancy of CREBBP at some ESR1 target gene promoters. May be required for histone hyperacetylation. Involved in the estrogen-induced cell proliferation and cell cycle progression of breast cancer cells.
Tissue specificity	Highly expressed in estrogen receptor positive breast tumors and in osteosarcoma tumors.
Sequence similarities	Belongs to the AAA ATPase family. Contains 1 bromo domain.
Cellular localization	Nucleus.

Images



Activity assay using ab198131.

Functional Studies - Recombinant human ATAD2 protein (ab198131)



4-20% SDS-PAGE analysis of ab198131 (5 μ g).

Please note: All products are "FOR RESEARCH USE ONLY. NOT FOR USE IN DIAGNOSTIC PROCEDURES"

Our Abpromise to you: Quality guaranteed and expert technical support

- Replacement or refund for products not performing as stated on the datasheet
- Valid for 12 months from date of delivery
- Response to your inquiry within 24 hours
- We provide support in Chinese, English, French, German, Japanese and Spanish
- Extensive multi-media technical resources to help you
- We investigate all quality concerns to ensure our products perform to the highest standards

If the product does not perform as described on this datasheet, we will offer a refund or replacement. For full details of the Abpromise, please visit <https://www.abcam.com/abpromise> or contact our technical team.

Terms and conditions

- Guarantee only valid for products bought direct from Abcam or one of our authorized distributors