

Product datasheet

Recombinant Human SCA10 protein ab161797

1 Image

Overview

Product name	Recombinant Human SCA10 protein
Protein length	Protein fragment

Description

Nature	Recombinant
Source	Wheat germ
Amino Acid Sequence	
Species	Human
Sequence	MAAPRPPPARLSGVMVPAPIQDLEALRALTALFKEQR NRETAPRTIFQRV LDILKKSSHAVELACRDPSQVENLASSLQLITECFRCL RNACIECSVNQN SIRNLDTIG
Amino acids	1 to 109
Tags	GST tag N-Terminus

Specifications

Our [Abpromise guarantee](#) covers the use of **ab161797** in the following tested applications.

The application notes include recommended starting dilutions; optimal dilutions/concentrations should be determined by the end user.

Applications	Western blot ELISA
Form	Liquid
Additional notes	Protein concentration is above or equal to 0.05 mg/ml. This product was previously labelled as ATXN10

Preparation and Storage

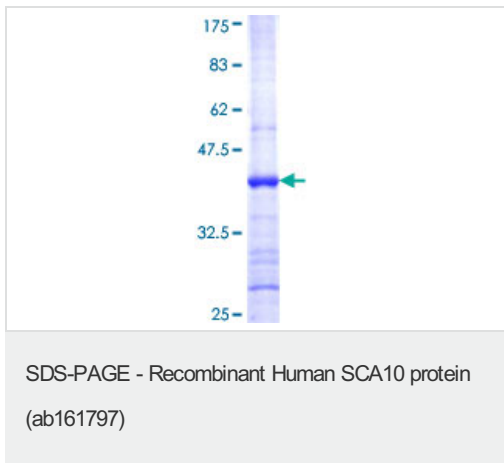
Stability and Storage	Shipped on dry ice. Upon delivery aliquot and store at -80°C. Avoid freeze / thaw cycles. pH: 8.00
------------------------------	---

Constituents: 0.31% Glutathione, 0.79% Tris HCl

General Info

Function	Necessary for the survival of cerebellar neurons (By similarity). Induces neuritogenesis by activating the Ras-MAP kinase pathway (By similarity). May play a role in the maintenance of a critical intracellular glycosylation level and homeostasis.
Tissue specificity	Expressed in the central nervous system.
Involvement in disease	Defects in ATXN10 are the cause of spinocerebellar ataxia type 10 (SCA10) [MIM:603516]. Spinocerebellar ataxia is a clinically and genetically heterogeneous group of cerebellar disorders. Patients show progressive incoordination of gait and often poor coordination of hands, speech and eye movements, due to degeneration of the cerebellum with variable involvement of the brainstem and spinal cord. SCA10 is an autosomal dominant cerebellar ataxia (ADCA).
Sequence similarities	Belongs to the ataxin-10 family.
Cellular localization	Cytoplasm > perinuclear region.

Images



ab161797 on a 12.5% SDS-PAGE stained with Coomassie Blue.

Please note: All products are "FOR RESEARCH USE ONLY AND ARE NOT INTENDED FOR DIAGNOSTIC OR THERAPEUTIC USE"

Our Abpromise to you: Quality guaranteed and expert technical support

- Replacement or refund for products not performing as stated on the datasheet
- Valid for 12 months from date of delivery
- Response to your inquiry within 24 hours
- We provide support in Chinese, English, French, German, Japanese and Spanish
- Extensive multi-media technical resources to help you
- We investigate all quality concerns to ensure our products perform to the highest standards

If the product does not perform as described on this datasheet, we will offer a refund or replacement. For full details of the Abpromise, please visit <https://www.abcam.com/abpromise> or contact our technical team.

Terms and conditions

- Guarantee only valid for products bought direct from Abcam or one of our authorized distributors